

Square

Design: Bruno Fattorini



Description

Shelves that features a simple design that, free of the superfluous, stands apart from decorations. Its barely invasive and neutral design easily dialogues with other signs or discretely merges with various products. Its storage function is both visible and concealed. Square has been studied to develop an endless number of compositions with a remarkable capacity to adapt to space and to acquire variations during time.

Elements are available in the MONOCHROMATIC version white and medium grey. Every module is made of a fibreboard panel, thickness 1", covered on the front with white or medium grey Fenix laminate, and at the back with a white or medium grey polymeric sheet. Shelves are high-pressure full color Fenix laminate, thickness 3/8" white and medium grey. Every element is fitted with wall connections (adjustable) and horizontal bars for easy wall mounting. The product has ready-made holes to allow its use in the four main rotations. Every rotation corresponds to a different use and function, and also to a new design and dialogue.

Seven types of panels are available: ELEMENT X, ELEMENT Y, ELEMENT L, ELEMENT T, ELEMENT C, ELEMENT H and ELEMENT Z. Some elements are also available in the MATERIAL version in wood, brass, reconstructed stone and black iron: ELEMENT X: made of fibreboard covered on the front with wood, brass, reconstructed stone or black iron, and at the back with white or medium grey polymeric sheet; ELEMENT Z: made of fibreboard covered on the front with wood, brass, reconstructed stone or black iron, and at the back with white or medium grey polymeric sheet. Shelves in high-pressure full color Fenix laminate, white and medium grey.

For better results with compositions, assemble the various elements by maintaining a minimum distance of 3/4" between panels. NEVER place two panels against each other. For elements with a shelf, we suggest a maximum load of 20 kg/mL. Made in Italy.

* For more specifications, please refer to the "Finishes & Materials" PDF

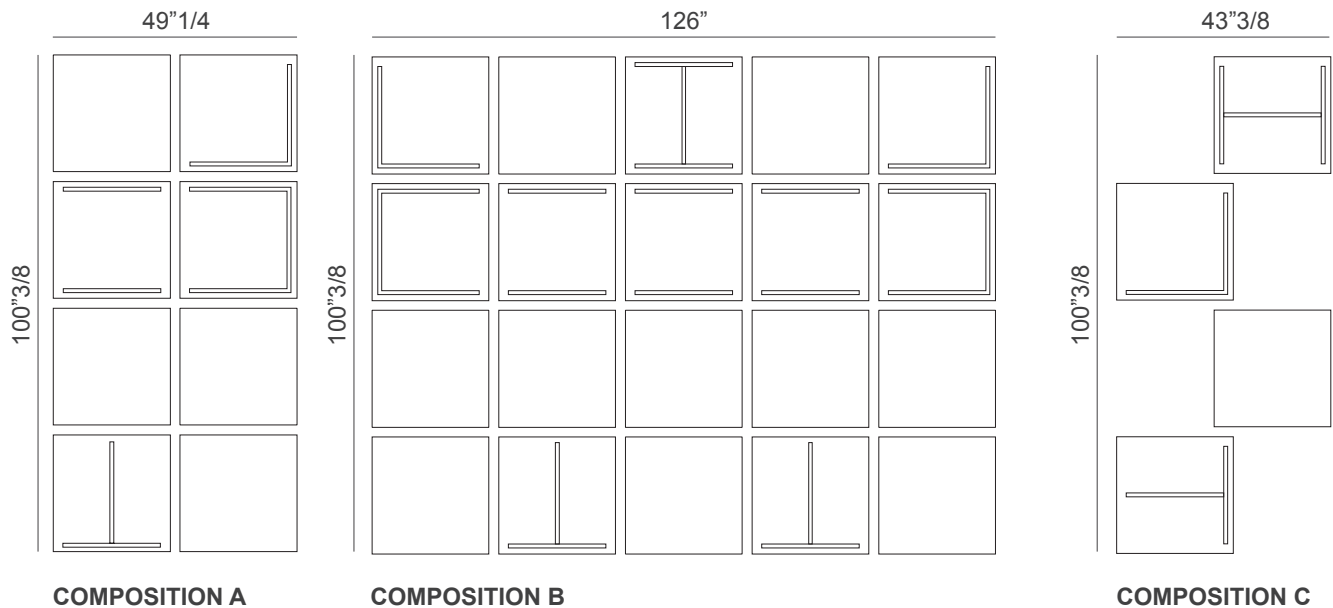
Square

Compositions

Composition A: 49"1/4W x 11"D x 100"3/8H

Composition B: 126"W x 11"D x 100"3/8H

Composition C: 43"3/8W x 11"D x 100"3/8H



Finishes & Materials

Frame: Fenix matt white / Fenix matt medium grey.

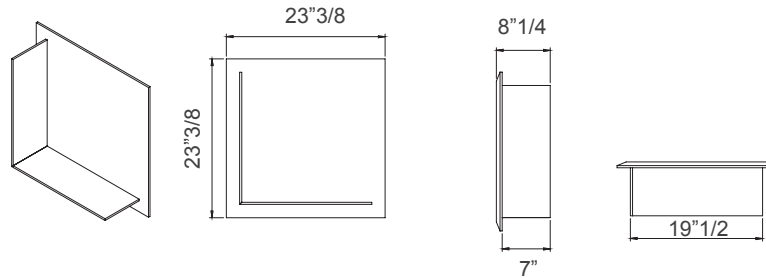
Front panels for elements X/Z: Fenix matt white / Fenix matt medium grey / Reconstructed stone / Wood / Black iron / Brass.

* For more specifications, please refer to the "Finishes & Materials" PDF

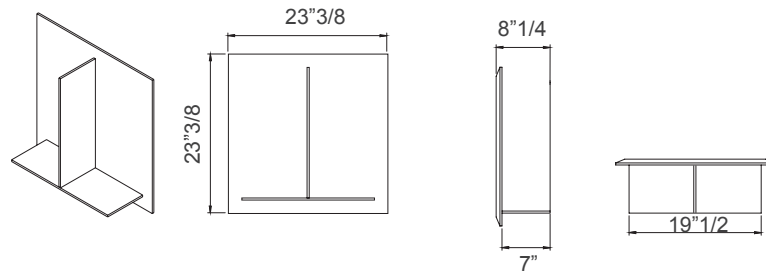
Square

Elements

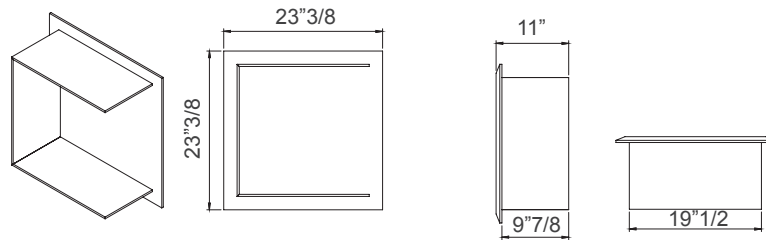
ELEMENT L
Panel with L-shaped shelf.



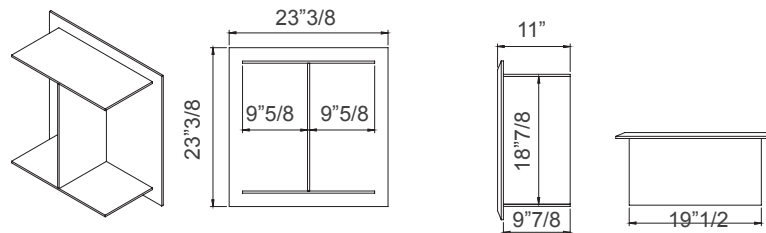
ELEMENT T
Panel with T-shaped shelf.



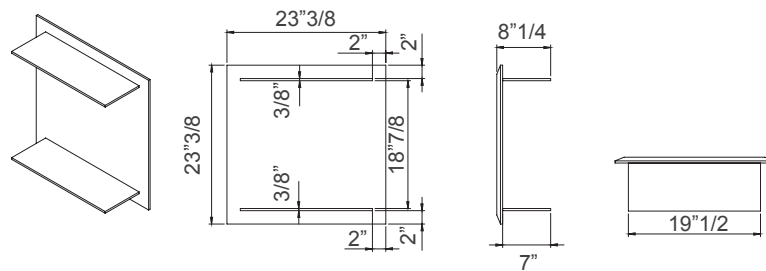
ELEMENT C
Panel with C-shaped shelf.



ELEMENT H
Panel with H-shaped shelf.



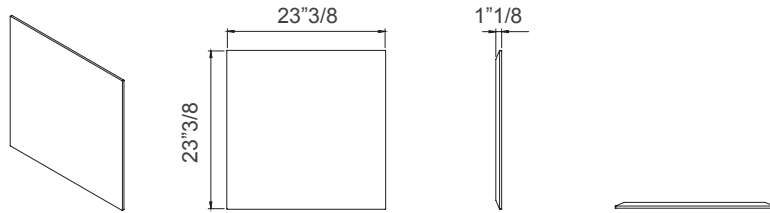
ELEMENT Y
Panel with double shelf.



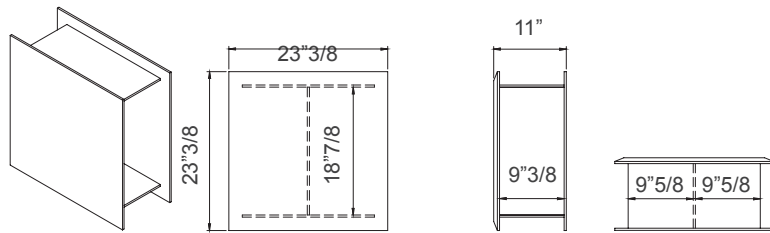
Square

Elements (cont.)

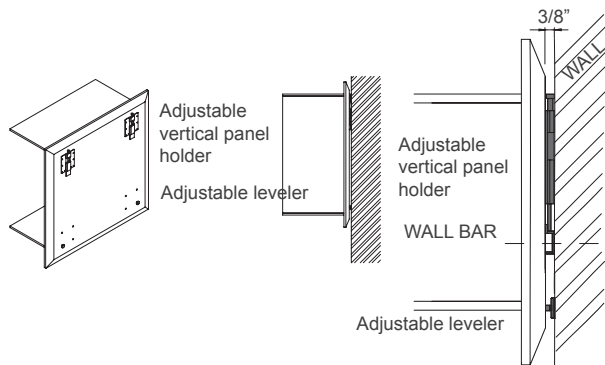
ELEMENT X
Simple panel.



ELEMENT Z
Storage panel with H-shaped shelf.



WALL HANGING SYSTEM



ROTATION OF THE MODULES:

All modules can be 360° mounted when assembling them as per examples provided.

