

Product: Arpa Coffee Table

COMBINATIONS

Structure (Steel)



Goffered matt white painted (X124)



Goffered matt black iron painted (X130)



Goffered matt pewter painted (X129)



Goffered matt corten painted (X128)

Top (Ceramic)



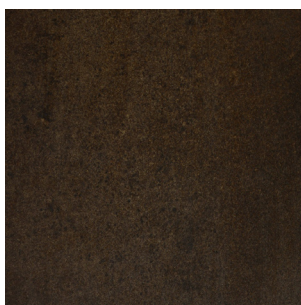
Light grey calce matt ceramic



Black calce matt ceramic



Matt medium grey
Pietra di Savoia ceramic



Corten ceramic (X010)

CALCE e PIETRA DI SAVOIA

Laminate porcelain obtained by wet grinding of clay raw materials, granite and metamorphic rocks, with a feldspathic component and ceramic pigments. Specially shaped in a compactor and sintered at 1200°C, with gas firing. Structurally reinforced with inert material (fiberglass blanket bonded on the back). It is simple, fast and easy to clean and has no special maintenance requirements as time goes by; generally speaking, all you need to clean the surface is warm water and a neutral detergent.