

Product: Conix Table

BASE / TOP

Concrete



CG - CEMENT GREY

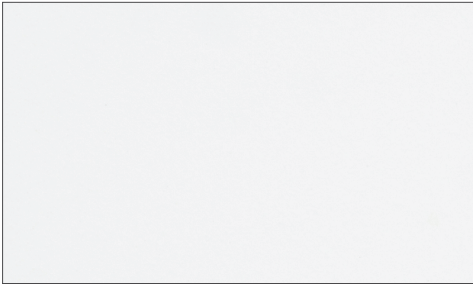
WE USE AN ULTRA-HIGH PERFORMANCE CONCRETE REINFORCED BY NATURAL MINERAL COMPONENTS AND ORGANIC FIBERS. THANKS TO ITS DISCONTINUOUS PORE STRUCTURE AND CRACK-BRIDGING FIBERS, IT IS VIRTUALLY IMPERVIOUS. PENETRATION OF CHLORIDE IONS IS ALSO SIGNIFICANTLY REDUCED AND THUS PERFORMS EXCEPTIONALLY WELL IN HIGHLY CORROSIVE ENVIRONMENTS SUCH AS NEAR BEACHES.

SEE MORE TOP FINISHES ON THE NEXT PAGE



TOP

Ceramic



WUM - WHITE



BS - BIANCO STATUARI



CD - CEPPO DOLOMITICA



CL - CEMENTO LUMINOSO



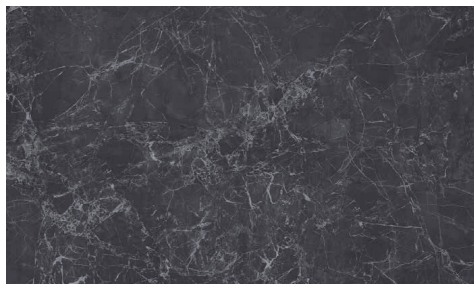
PG - PEARL GREY



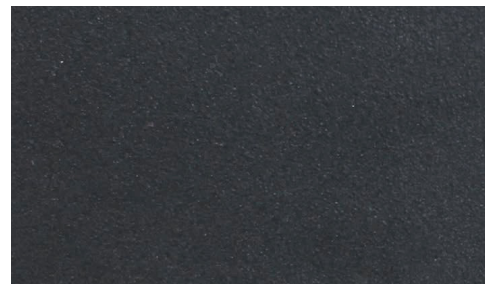
TS - TERRA SABBIA



TM - TERRA MARRONE



NM - NERO MARQUINA



ZUM - BLACK