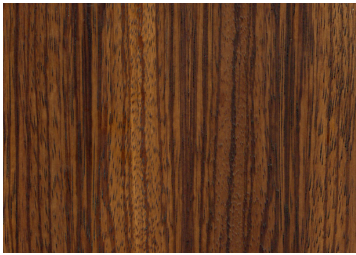


Product: Back Pack Sectional

SIDE TABLE

Veneered wood



Zebrano



Eucalyptus

BACKREST'S FEET

Metal



Micaceous brown

SEE COVERS ON THE NEXT PAGES



COVER

Fabric | Collection: Alias | Cat. A



1340



1341



1342



1343



1344



1345



1346



1347



1348

Composition
100% Polyester

Martindale
30.000 cycles

Cleaning and maintenance



COVER

Fabric | Collection: E-Cot | Cat. A



1040



1041



1402



1403



1044



1045



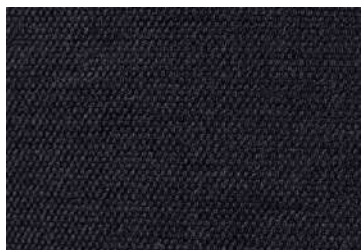
1046



1047



1048



1049

Composition
72% Cotton - 28% Acrylic

Martindale
20.000 cycles

Cleaning and maintenance



COVER

Fabric | Collection: Basmati | Cat. C



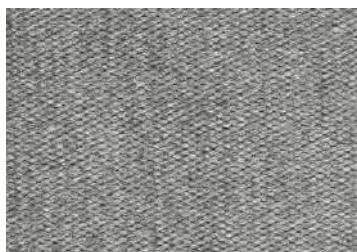
3530



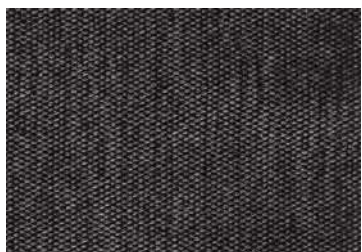
3531



3532



3533



3534

The collection Basmati is made with interwoven yarns of cotton and acrylic chenille. This weaving process makes the fabric very hard wearing. The acrylic chenille gives the fabric an enhanced soft touch. The slight color difference between the cotton thread and the chenille creates a three-dimensional effect.

Composition

52% Cotton - 47% Acrylic - 1% Polyester

Martindale

30.000 cycles

Cleaning and maintenance



COVER

Fabric | Collection: Bussy | Cat. C



3481



3482



3491



3492

Bussy is inspired by high quality men's clothing sector and it is an elegant Jacquard fabric made of linen and viscose. The use of slub yarns of similar color shades gives it an extremely refined mélange look. The very soft color contrast and the mat-glossy look make it a modern fabric, suitable for discretely upholstering important seats and for enhancing their form. Besides, its delicate tones make it suitable for every environment. Bussy has an excellent abrasion resistance and a very good color fastness. The viscose, mixed with linen, is not a chenille and consequently it prevents the sliding forward of the covers on the padding.

Composition 70% Viscose - 30% Flax/Linen	Martindale 25.000 cycles	Cleaning and maintenance     
--	------------------------------------	--

COVER

Fabric | Collection: Caledonia | Cat. C



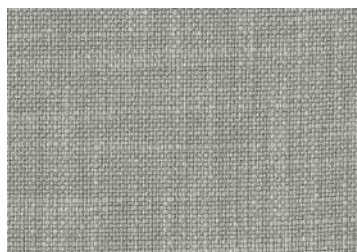
3536



3537



3538



3539



3540



3541

This fabric collection is made with interlaced Panama yarns. The fabric consists of two coupled threads of viscose and linen characterized by variances in colour and irregularities that give a three-dimensional aspect to the fabric. In order to make this fabric stronger, there is a foundation of cotton threads, called double warp. A special finish gives a soft touch with a glossy and elegant look.

Composition

58% Viscose - 11% Flax / Linen -
31% Cotton

Martindale

40.000 cycles

Cleaning and maintenance



COVER

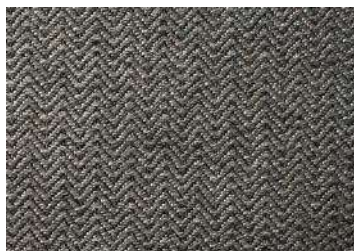
Fabric | Collection: Duchess | Cat. C



3270



3271



3272



3273



3274



3275

Composition

48% Viscose - 24% Flax/Linen -
17% Cotton - 11% Acrylic

Martindale

20.000 cycles

Cleaning and maintenance



COVER

Fabric | Collection: Duke | Cat. C



3260



3261



3262



3263



3264



3265

Composition

45% Viscose - 22% Flax / Linen - 20%
Cotton - 10% Acrylic - 3% Other fibres

Martindale

25.000 cycles

Cleaning and maintenance



COVER

Fabric | Collection: Musk | Cat. C



3510



3511



3512



3513



3514



3515



3516



3617

The collection Musk is made of a polyester warp and an acrylic yarn-dyed chenille weft. This chenille is characterized by a voluminous structure obtained through a particular twisting and trimming process. The mixture of the fibers grants excellent technical characteristics of the product and an extremely soft touch.

Composition

41% Cotton - 36% Polyester - 23% Acrylic

Martindale

25.000 cycles

Cleaning and maintenance



COVER

Fabric | Collection: Dakota | Cat. D



4690



4691



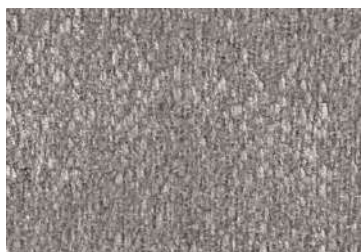
4692



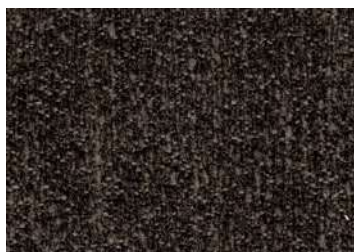
4693



4695



4696



4697



4698

Dakota has a beautiful three-dimensional effect and a two tone effect achieved by the slight color variance between warp and weft and by the tiny pattern. Their composition is mainly natural due to the presence of viscose and linen threads in the warp combined with cotton and Dralon chenille in the weft. This particular acrylic chenille is soft and thermally insulating and its pile does not flatten with use, keeping the classic look of viscose chenille.

Composition

35% Acrylic - 33% Viscose - 12% Polyester -
10% Cotton - 10% Flax / Linen

Martindale

50.000 cycles

Cleaning and maintenance



COVER

Fabric | Collection: Deep | Cat. D



4955



4956



4957



4958



4959



4960

The collection Deep is made with interwoven yarns that allow it to obtain a three-dimensional effect not common in upholstery fabrics. The manufacturing process and the use of assorted fibers create a wide range of color shades. The structure makes the fabric compact and suitable for upholstery. The embossed effect gives the impression of two overlapped fabrics.

Composition

47% Acetate - 26% Cotton - 9% Flax/Linen -
9% Polyester - 9% Viscose

Martindale

30.000 cycles

Cleaning and maintenance



COVER

Fabric | Collection: Diem | Cat. D



4870



4871



4872



4873



4874



4875

The fabric is made on a warp of 9600 twisted polyester threads with two wefts of patterned threads which characterise its unique look thanks to the use of a weft in melange chenille, which lends the fabric softness, and a linen with a multi-colored print look. Truly a one of a kind processing, which adds movement to the textile structure. The finishing with softening treatment and drying in an AIRO machine make this quality hard-wearing and enveloping at the same time.

Note

With use it is normal that the viscose fibers tend to be flatten with the result that the fabric assumes a "used" look with darker and lighter chromatic effects. This shaded look is not a fault but a characteristic of all chenille fabrics.

Composition

38% Cotton - 24% Viscose -
20% Flax/Linen - 18% Polyester

Martindale

26.000 cycles

Cleaning and maintenance



COVER

Fabric | Collection: Diva | Cat. D



4880



4881



4882



4883



4884



4885



4886



4887

Diva is built with a plain weave, the first and most compact, designed to enhance the highly attractive and beguiling long-pile polyester chenille. This is no ordinary chenille, but rather a specific yarn obtained by cutting filaments processed in open-end spinning, with fiber compression and not with traditional spinning methods. The end result is a particular fabric with a truly remarkable feel, which is at the same time soft and full, with very low loss of shine during use and over time. This "velvet-smooth" fabric becomes more and more attractive with use, as the open-end fibers tend to open up with time, continuously providing a velvety softness, that mesmerising and enjoyable soft feel that makes it unique. Diva is suitable for all seasons, matching any style of interior decor.

Composition

80% Polyester - 20% Cotton

Martindale

100.000 cycles

Cleaning and maintenance



COVER

Fabric | Collection: Dub | Cat. D



4985



4986



4987



4988



4989



4990



4991



4992



4993



4994

The collection Dub is a Jacquard woven fabric with some unique characteristics. The warp is a mix of viscose and linen twisted threads, printed using a particular process called "Space dyeing", which injects different colors inside the single bobbin through needles. The result is a random effect with different color shades. This kind of printing enhances the twisted thread and creates a unique pattern. The weft is made of two yarns: the cotton printed with the same process as the warp and the chenille with melange effect, obtained by a long precision process that combines two colors. The cotton and the chenille threads are finally twisted together.

Composition

46% Cotton - 32% Viscose -
18% Flax/Linen - 4% Polyester

Martindale

26.000 cycles

Cleaning and maintenance



COVER

Fabric | Collection: Dudeup | Cat. D



4740



4741



4742



4745



4746



4747



4748

The warp is made of twisted viscose and linen threads and slub cotton mixed with a thin polyester fiber. The weft is made of a twisted thread of viscose and printed linen, a thread of viscose and plain linen, and a plain chenille. The printing method uses a particular process called "Space dyeing", which creates a random effect with different color shades. This kind of printing enhances the twisted thread creating a unique pattern. The result is a mixture of different patterned threads that give the collection a bouclé look; the chenille gives a soft touch to the fabric. The finishing process makes the fabric soft and at the same time very durable.

Composition

42% Cotton - 37% Viscose -
16% Flax/Linen - 5% Polyester

Martindale

25.000 cycles

Cleaning and maintenance



COVER

Fabric | Collection: Dynamo | Cat. D



4270



4271



4272



4273



4274



4275

The collection Dynamo suggests moss stitch knitting. The irregular structure and the mix of wool and acrylic differently dyed gives a three-dimensional effect. The linen fibre has been added to give an enhanced soft touch. The particular weaving and the interwoven yarns make the fabric very hard wearing.

Composition

49% Acrylic - 15% Polyester - 14% Wool -
9% Cotton - 8% Flax/Linen - 5%

Martindale

30.000 cycles

Cleaning and maintenance



COVER

Fabric | Collection: Euphoria | Cat. D



4860



4861



4862



4863



4864



4865



4866



4867

The fabrics of collection Euphoria are mainly made of natural fibers (wool and viscose) and the threads are made of Shetland wool, obtained through zero-emission production processes. The threads in wool are mixed with viscose chenille and give to the fabric a unique melange look.

Composition

48% Wool - 30% Viscose - 15%
Polyamide / Nylon - 7% Cotton

Martindale

30.000 cycles

Cleaning and maintenance



COVER

Fabric | Collection: Jackie | Cat. D



4965



4966



4967



4968



4971



4972



4973



4974



4975

Composition

40% Viscose - 30% Wool - 15% Polyester -
13% Cotton - 2% Acrylic

Martindale

25.000 cycles

Cleaning and maintenance



COVER

Fabric | Collection: Maze | Cat. D



4940



4941



4942



4943

The collection Maze is a Jacquard fabric made of different fibers, in order to obtain a melange effect. The warp in viscose and linen gives brightness and elegance to the fabric, the cotton thread reinforces its structure and gives added strength. The weft is made of multicolored crimped yarn that gives depth to the texture of the fabric. The chenille thread gives the fabric a soft touch. This collection has a stain proofing treatment.

Composition

36% Cotton - 34% Viscose -
17% Flax/Linen - 9% Polyester - 4% Acrylic

Martindale

25.000 cycles

Cleaning and maintenance



COVER

Fabric | Collection: Mousse | Cat. D



4920



4921



4922



4923



4924



4925



4926



4927



4928

The warp is made of 100% Egyptian pure cotton. The fiber is treated to make it softer and more resistant to abrasion. This treatment, together with the weft made of soft viscose chenille, gives a modern and charming aspect to the fabric. Mousse is back coated to make it more resistant and to facilitate the manufacturing process.

Composition

60% Viscose - 40% Cotton

Martindale

25.000 cycles

Cleaning and maintenance



COVER

Fabric | Collection: Pyro | Cat. D



4945



4946



4947



4948



4949



4950

This fabric consists of a foundation of two specially woven cotton threads that make its surface stronger. Its unusual aspect is due to muted and elegant variances in color, obtained through a careful mix of fibers.

Composition

45% Acetate - 24% Cotton -
19% Flax/Linen - 12% Polyester

Martindale

25.000 cycles

Cleaning and maintenance



COVER

Fabric | Collection: Ray | Cat. D



4230



4231



4232



4233



4234



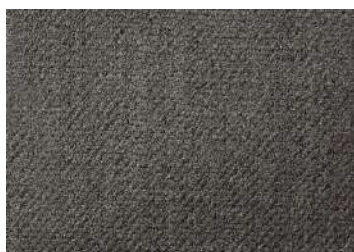
4235



4236



4237



4238

Note

With use it is normal that the viscose fiber tends to be flatten with the result that the fabric assumes a "used" look with darker and lighter chromatic effects. This shaded look is not a fault but a characteristic of all chenille fabrics.

Composition

45% Cotton - 45% Viscose - 10% Flax/Linen

Martindale

40.000 cycles

Cleaning and maintenance



COVER

Fabric | Collection: Taiga | Cat. D



4830



4831



4832



4833



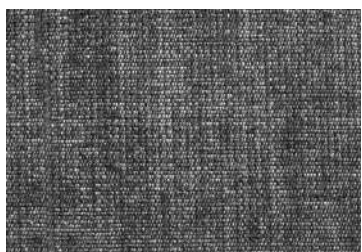
4834



4835



4836



4837



4838

This collection is a Jacquard orthogonal fabric built on a warp of 4.800 threads: a combed spun viscose and linen thread twisted at both ends and a synthetic thread which gives strength to the fabric. The weft is made of a cotton thread and a very soft thread made of yard-dyed viscose and cotton chenille. The final result is an unusual chromatic effect obtained through the use of threads of different colors in the weave.

The chenille gives the fabric a soft touch but it is not visible, as it is part of the fabric structure. With use it is normal that the viscose fiber tends to be flatten with the result that the fabric assumes a "used" look with darker and lighter chromatic effects. This shaded look is not a fault but a characteristic of all chenille fabrics.

Composition

60% Viscose - 18% Cotton -
12% Polyester - 10% Flax/Linen

Martindale

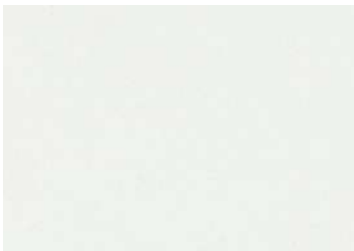
20.000 cycles

Cleaning and maintenance



COVER

Fabric | Collection: Élite | Cat. E



5750



5751



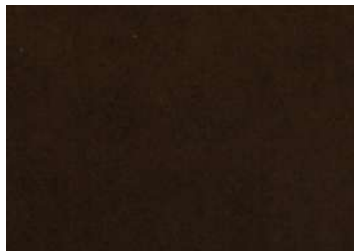
5752



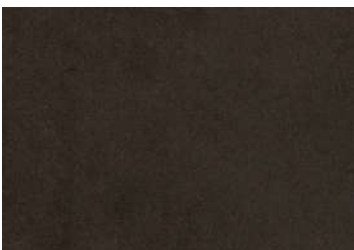
5753



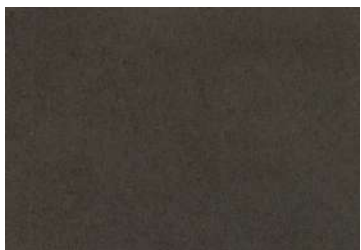
5754



5755



5756



5757



5758



5759



5760



5761

COVER

Fabric | Collection: Élite | Cat. E



5762



5763



5764



5765



5766



5767



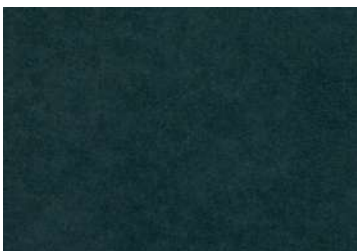
5768



5769



5770



5771



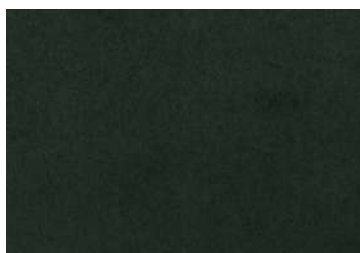
5772



5773

COVER

Fabric | Collection: Élite | Cat. E



5774



5775



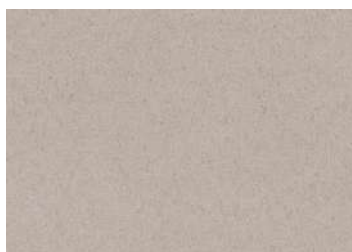
5776



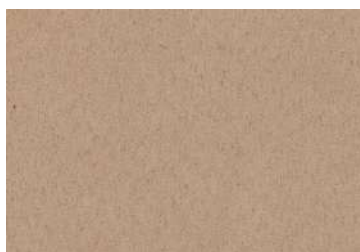
5777



5778



5779



5780



5781

The collection Elite is made of a high-resistant microfibre yarn that gives the fabric top quality characteristics: high abrasion and pilling resistance, soft touch and a special "signature" effect. The dyeing process employs non-toxic and eco-friendly products. The collection Elite is washable and fire resistant. It complies with the following regulations: Classe 1 IM - BS 5852 Part O & 1:1979 - CRIB 5 BS 5852:2006 - EN 1021-1:2006 & EN1021-2:2006 - TB117:2013

Composition
100% Polyester

Martindale
200.000 cycles

Cleaning and maintenance



COVER

Fabric | Collection: Estelle | Cat. E



5350



5351



5352



5353



5354



5355

Estelle, with its clean and linear structure, has a contemporary look suitable to all environments. Its delicate plays of colors and its visual and tactile elegance are the result of the natural elements used: the warp, made of linen and viscose threads, is twisted in the weft with thin and glossy chenille. The back side is made of twisted cotton. The double construction gives the fabric an unexpected volume. The finishing process makes the fabric very soft for a unique touch.

Composition

42% Cotton - 38% Viscose - 15% Polyester
- 5% Flax / Linen

Martindale

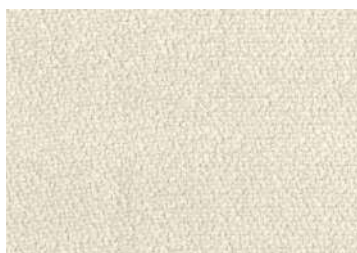
25.000 cycles

Cleaning and maintenance



COVER

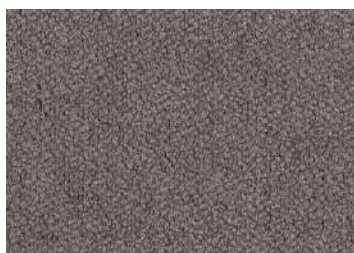
Fabric | Collection: Evron | Cat. E



5365



5366



5367



5368



5369



5370

The collection Evron has a warp made of viscose and printed linen. Its peculiarity is the special patterned thread used for the weft: a cotton and viscose chenille with a bouclé look obtained through machines specialized in the manufacturing of fancy yarns. The thickness of this thread makes this fabric very compact. A long finishing process consisting in a series of washing procedures and an "Airo" treatment give the fabric a very soft touch.

Composition

44% Cotton - 32% Viscose - 18% Flax /
Linen - 6% Polyester

Martindale

46.000 cycles

Cleaning and maintenance



COVER

Fabric | Collection: Fusion | Cat. E



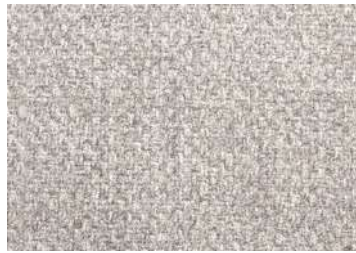
5480



5481



5482



5483

This fabric collection is made with interlaced Panama yarns. The fabric consists of two coupled threads that form the same pattern both horizontally and vertically. In order to make this kind of fabric stronger, there is a foundation of thin threads, called double warp. These threads are made of chenille viscose and linen. The result is a soft touch with a glossy look. The dyeing process gives a light shading effect. With use it is normal that the viscose fiber tends to be flatten with the result that the fabric assumes a "used" look with darker and lighter chromatic effects. This shaded look is not a fault but a characteristic of all chenille fabrics.

Composition

45% Viscose - 32% Cotton -
10% Polyester - 8% Flax/Linen - 5% Acetate

Martindale

22.000 cycles

Cleaning and maintenance



COVER

Fabric | Collection: Pure | Cat. E



5470



5471



5472



5473



5474



5475

The name of the collection reflects exactly the nature and the colors of the fabric. Pure is made of 90% linen, a natural, precious, fresh fiber with can highly absorb humidity. Linen is very resistant, does not cause allergies and it is very soft on the skin. This fabric is flow dyed (not yarn-dyed) in looms of Italian technology, a guarantee of quality. The linen yarn is mechanically twisted with very thin nylon thread, to exalt the natural characteristics of linen. The fabric is ennobled through calendaring, which consists in squeezing the fabric between heavy, humid and hot cylinders, to obtain a glossy and uniform aspect of the fabric. The batch is finally ironed in the width to prevent its stretching at the first cleaning or with use. The linen used presents the typical irregularities of this fiber. During the quality control process, knots are untied and inserted into the fabric, making it uniform. The weight of 1 Kilogram per meter makes this product suitable for multiple uses. Its characteristics make it resistant to time and use.

Note

This fabric has been manufactured using natural fibers. Any slubs, impurities and irregularities are characteristic of the yarn used and enhance the special nature of the fabric.

Composition 90% Flax/Linen - 10% Polyamide/Nylon	Martindale 30.000 cycles	Cleaning and maintenance     
--	------------------------------------	--

COVER

Fabric | Collection: Timeless | Cat. E



5320



5321



5322



5323



5324



5325

Composition

36% Flax/Linen - 24% Cotton -
24% Viscose - 16% Polyester

Martindale

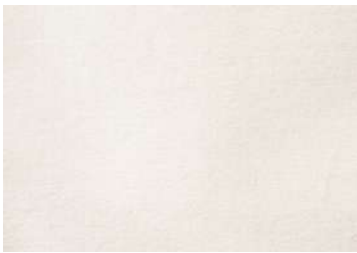
26.000 cycles

Cleaning and maintenance



COVER

Fabric | Collection: Vellù | Cat. E



5500



5502



5503



5504



5505



5506



5508



5509



5510



5511



5512



5513

COVER

Fabric | Collection: Vellù | Cat. E



5525



5526



5527



5528



5529



5530



5531

Composition
100% Cotton

Martindale
25.000 cycles

Cleaning and maintenance



COVER

Fabric | Collection: Vellù PL | Cat. E



5560



5561



5565



5566



5567



5568



5569



5570



5571



5572

This fabric collection is a mixture of soft cotton fibers and resistant polyester fibers. Its smooth and refined beauty and the melange of pastel color achieved by dyeing the two different fibers together make this fabric unique. It is washable and very durable.

Composition

50% Polyester - 50% Cotton

Martindale

100.000 cycles

Cleaning and maintenance



COVER

Fabric | Collection: Moiré | Cat. Extra



7450



7451



7452



7453



7454

Moiré is a yarn-dyed velvet made of 100% viscose, obtained through a special dyeing called tops dyeing. Top is selecting long parallel fibers that are used to spin worsted yarn. The top in the form of sliver is dyed and then blended with other colors. The advantages of this process are: good tensile strength, less impurities and soft touch. Each single color is obtained through the combination of four different shades; the result is an elegant and refined mosaic. Thanks to the loom used to produce this fabric, the number of threads per inch is higher. This enables to obtain closely woven velvet with a definite pattern suitable for any use.

After the weaving the velvet is stripped and cut to open the fiber and make it ready to be treated in the next production phases. The velvet is finally treated with silicone and enzyme agents that include crease-resistant ones, to obtain a soft touch and a glossy aspect. Finally a resin is applied to the velvet to grant precision during sewing process. Steam from the back at low heat setting. With use the fibers tend to be flatten.

Note

Steam from the back at low heat setting. With use the fibers tend to be flatten.

Composition 74% Viscose - 21% Cotton - 5% Polyester	Martindale 50.000 cycles	Cleaning and maintenance     
---	------------------------------------	--

COVER

Fabric | Collection: Topaz | Cat. Top



8075



8076



8077

Note

Steam on the reverse side at low temperature. Velvet is a very delicate fabric and variances of color created by the direction of pile are natural characteristics. With use the fibers tend to flatten.

Composition 100% Cotton	Martindale 25.000 cycles	Cleaning and maintenance     
-----------------------------------	------------------------------------	--

COVER

Leather | Category: Pelle First



4075



4076



4077



4078



4079



4080



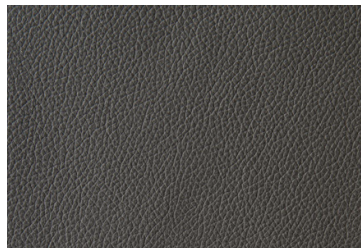
4081



4083



4110

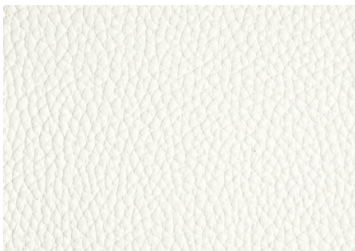


4111

Leather type Corrected grain	Thickness 0,9/1 mm	Origin Bovine hides	Tannage Chrome	Dyeing Through-dyeing
--	------------------------------	-------------------------------	--------------------------	---------------------------------

COVER

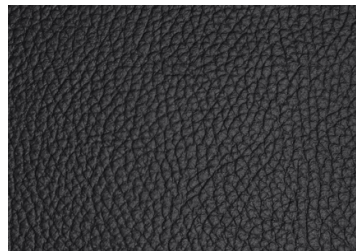
Leather | Category: Pelle Plus



4000



4006



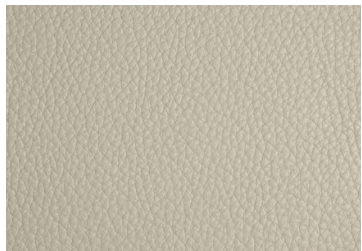
4007



4030



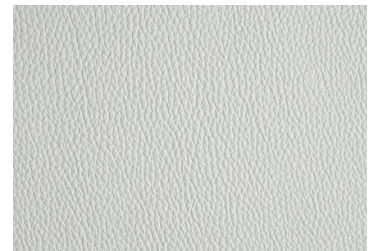
4031



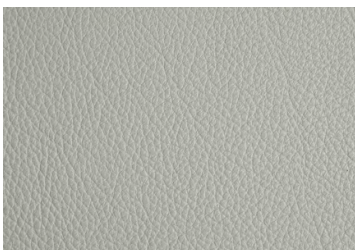
4032



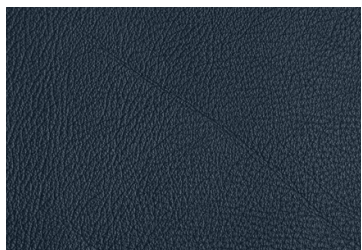
4033



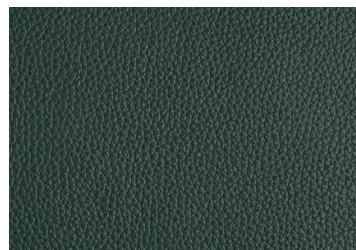
4034



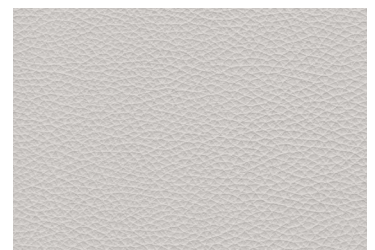
4035



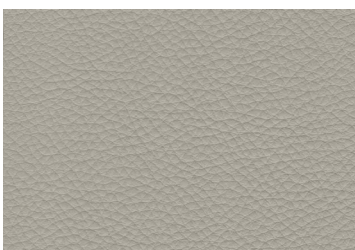
4036



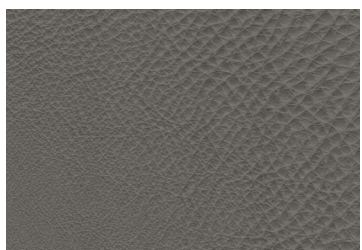
4037



4041



4042

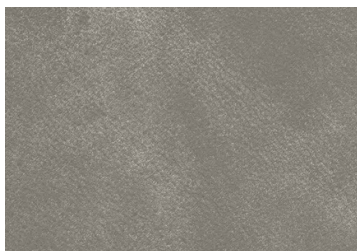


4043

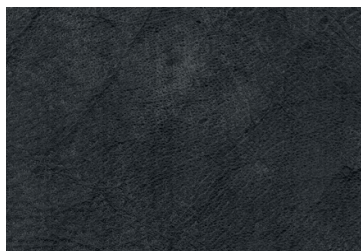
Leather type Natural half grain	Thickness 1,3/1,5 mm	Origin European raw hides	Tannage Chrome	Dyeing Through-dyeing Aniline	Finishing Pigmented and protective coat
---	--------------------------------	-------------------------------------	--------------------------	--	---

COVER

Leather | Category: Pelle Plus | Collection: Nabuk Rustico



4038



4039

Nubuck leather is aniline leather. Nubuck comes from the full grain which has been sanded, producing a velvet-like surface and a "signature" effect. The effects of light and shade have a circular but irregular form and are obtained by hand-sanding and give leather a vintage but elegant effect. The natural grain is not covered by any finishing. The presence of scratches, marks and wrinkles are not to be considered imperfections but evidence of the natural quality. For the normal cleaning dust with a soft and dry cloth. Never use abrasive or aggressive products like solvents, shoe polish and stain removers. Even water must be immediately removed, otherwise it leaves a mark on leather.

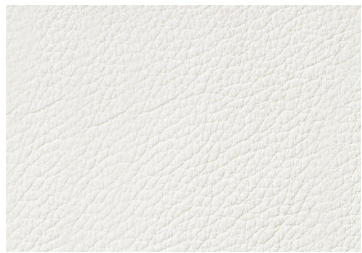
Leather type	Thickness	Origin	Tannage	Dyeing	Finishing
Nubuck	1,3/1,5 mm	Raw hides	Chrome	Through-dyeing Aniline	Aniline

COVER

Leather | Category: Pelle A | Collection: Full Grain



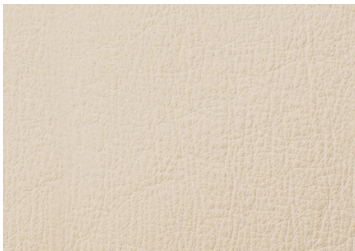
2102



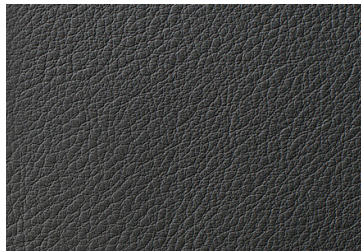
2110



2206



2214



2219



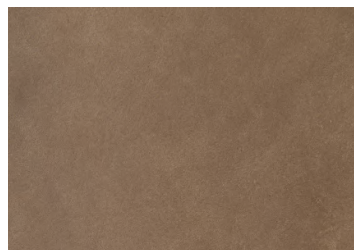
2228



2610



2611

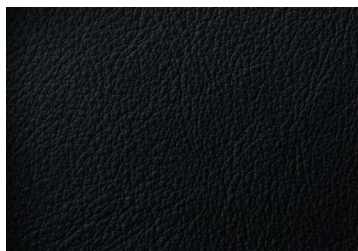


2612

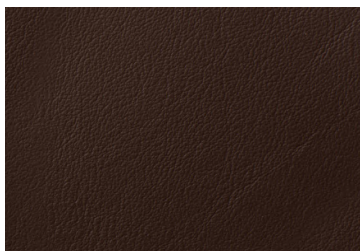
Leather type	Thickness	Origin	Tannage	Dyeing	Finishing
Full grain	1,1/1,2/1,4	European raw hides	Chrome	Aniline	Water finishing/ Aniline

COVER

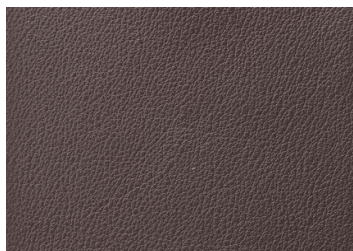
Leather | Category: Pelle A | Collection: Corrected Grain



2401



2407



2420

Leather type Corrected grain	Thickness 1,2/1,4 mm	Origin European raw hides	Tannage Chrome	Dyeing Through-dyeing Aniline	Finishing Pigment finishing
--	--------------------------------	--	--------------------------	--	--

COVER

Leather | Category: Pelle A | Collection: Nabuk Rustico



2530



2531



2532



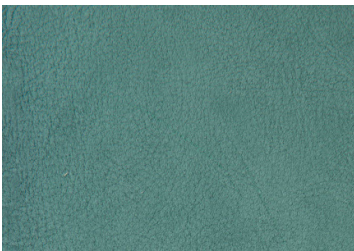
2533

Nubuck leather is aniline leather. Nubuck comes from the full grain which has been sanded, producing a velvet-like surface and a "signature" effect. The effects of light and shade have a circular but irregular form and are obtained by hand-sanding and give leather a vintage but elegant effect. The natural grain is not covered by any finishing. The presence of scratches, marks and wrinkles are not to be considered imperfections but evidence of the natural quality. For the normal cleaning dust with a soft and dry cloth. Never use abrasive or aggressive products like solvents, shoe polish and stain removers. Even water must be immediately removed, otherwise it leaves a mark on leather.

Leather type Nubuck	Thickness 1,3/1,5 mm	Origin European raw hides	Tannage Chrome	Dyeing Through-dyeing Aniline
-------------------------------	--------------------------------	--	--------------------------	--

COVER

Leather | Category: Pelle A | Collection: Nabuk Effect



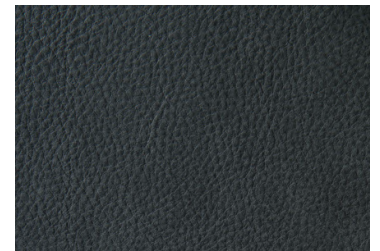
2536



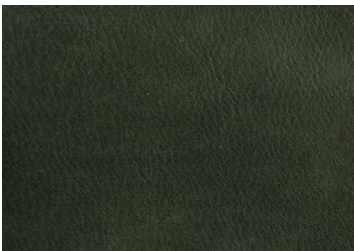
2537



2538



2539



2540



2541



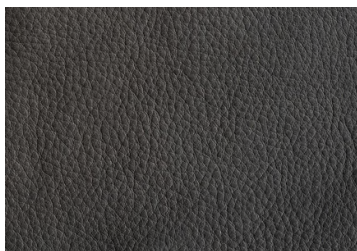
2542

Nubuck leather is aniline leather. Nubuck comes from the full grain which has been sanded, producing a velvet-like surface and a "signature" effect. The effects of light and shade have a circular but irregular form and are obtained by hand-sanding and give leather a vintage but elegant effect. The natural grain is not covered by any finishing. The presence of scratches, marks and wrinkles are not to be considered imperfections but evidence of the natural quality. For the normal cleaning dust with a soft and dry cloth. Never use abrasive or aggressive products like solvents, shoe polish and stain removers. Even water must be immediately removed, otherwise it leaves a mark on leather.

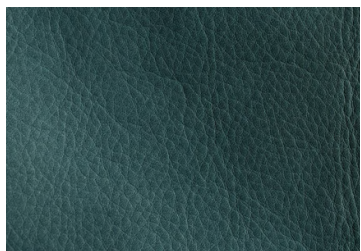
Leather type Nubuck	Thickness 1,3/1,5 mm	Origin European raw hides	Tannage Chrome	Dyeing Through-dyeing Aniline
-------------------------------	--------------------------------	--	--------------------------	--

COVER

Leather | Category: Pelle B | Collection: Full Grain



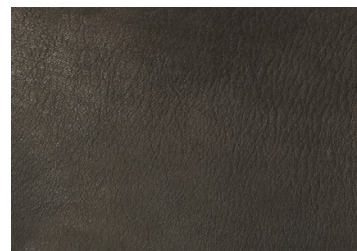
3147



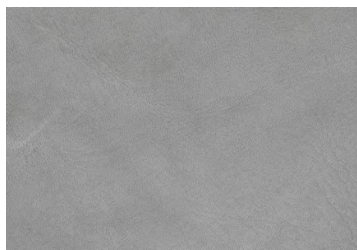
3149



3151



3152



3153



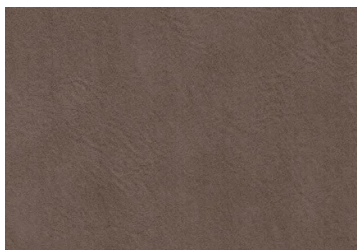
3165



3166



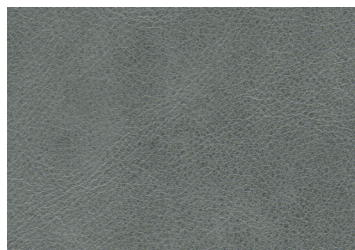
3167



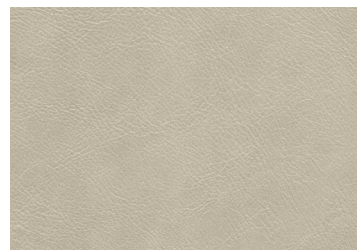
3168



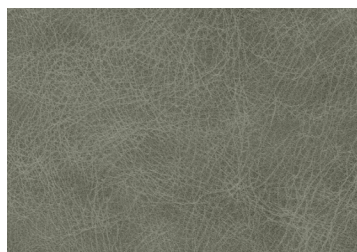
3190



3191



3192



3193

Aniline leathers are of the best available quality as they are selected among hides of first choice. Aniline leathers are the most natural leathers as no finishing is applied on the surface to hide imperfections, so that they retain the hide's natural grain. The imperfections are not a fault but a characteristic of this kind of leather. Color variances in leathers supplied at different times, and also within the same leather hide are not imperfections but evidence (or consequence) of aniline leather. With the normal use of the sofa the leather becomes burnished in those areas subject to more friction. Dust with a soft and dry cloth for the normal cleaning. Never use abrasive or aggressive products like solvents, stain removers.

Leather type	Thickness	Origin	Tannage	Dyeing	Finishing
Full grain	1,0/1,2 mm	European raw hides	Chrome	Through-dyeing Aniline	Aniline

COVER

Leather | Category: Pelle B | Collection: Nabuk



3110



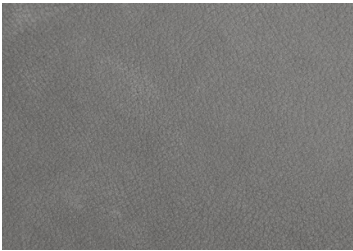
3111



3114



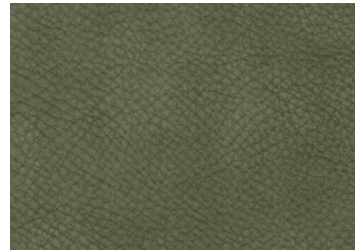
3115



3116



3117



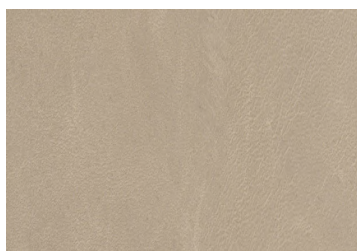
3118

Nubuck leather is aniline leather. Nubuck comes from the full grain which has been sanded, producing a velvet-like surface and a "signature" effect. This leather is smooth, only in some areas the natural grain is visible, as the leather is milled to make it softer. The presence of scratches, marks and wrinkles are not to be considered imperfections but evidence of the natural quality. For the normal cleaning dust with a soft and dry cloth. Never use abrasive or aggressive products like solvents, shoe polish and stain removers. Even water must be immediately removed, otherwise it leaves a mark on leather.

Leather type Nubuck	Thickness 1,2/1,4 mm	Origin European raw hides	Tannage Chrome	Dyeing Through-dyeing Aniline
-------------------------------	--------------------------------	--	--------------------------	--

COVER

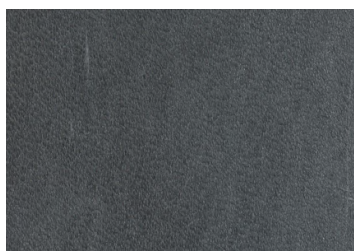
Leather | Category: Pelle B | Collection: Wax Finish



3155



3156



3157



3158

Aniline leathers are of the best available quality as they are selected among hides of first choice. Aniline leathers are the most natural leathers as no finishing is applied on the surface to hide imperfections, so that they retain the hide's natural grain. The imperfections are not a fault but a characteristic of this kind of leather. Color variances in leathers supplied at different times, and also within the same leather hide are not imperfections but evidence (or consequence) of aniline leather. With manufacturing and with the normal use of the sofa some wrinkles will appear on the leather, which will permanently mark it. With use the leather may lose the glossy look in some areas. Dust with a soft and dry cloth for the normal cleaning. Never use abrasive or aggressive products like solvents, stain removers. Even water must be immediately removed, otherwise it leaves a mark on leather.

Leather type	Thickness	Origin	Tannage	Dyeing	Finishing
Full grain	1,0/1,2 mm	European raw hides	Chrome	Through-dyeing Aniline	Wax finish