

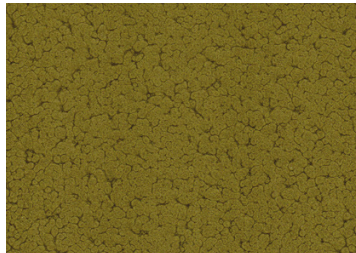
Product: Punta Ala Sofa

STRUCTURE

Metal



Corten



Olive

WEAVING

Polypropylene



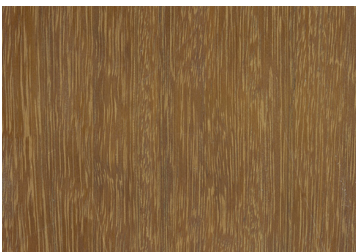
Anthracite Grey



Beige

SIDE TABLE'S TOP

Wood



Iroko

COVER

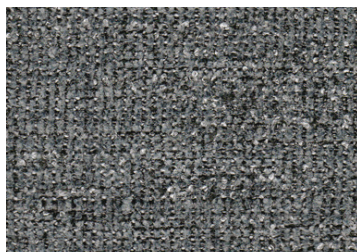
Fabric | Collection: Harvey | Cat. D-H



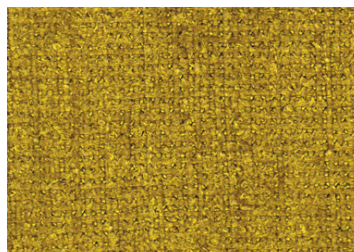
4210



4211




4212



4213

Harvey is a fabric created for outdoor and indoor use. It is a soft, enveloping and full-bodied chenille, with pleasant weave that is inviting to the touch. It presents impressive technical qualities: durability and immutability of its appearance over time, excellent resistance to atmospheric agents and the action of sunlight. Harvey has excellent thermal capacities: it is warm in the winter and fresh in the summer. It is non-deformable and does not shrink. It is hypoallergenic, anti-mite and bacteriostatic: ideal for homes with children or pets. Its non-odour retaining capacity makes it perfect for all types of settings. Harvey can be washed by hand or in the washing machine. Its special fibres do not trap dirt or stains, making the fabric extremely easy to wash. For impeccable results simply add a little neutral detergent and no chemical solvents. The fabric must not be ironed. Once its lifecycle is completed, Harvey is 100% recyclable. It is also produced at KM0, in a single plant.

Composition 100% Polypropylene	Martindale 60.000 cycles	Cleaning and maintenance 
--	------------------------------------	--

COVER

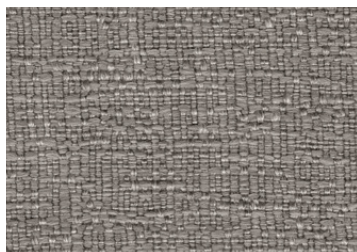
Fabric | Collection: Horizon | Cat. D-H



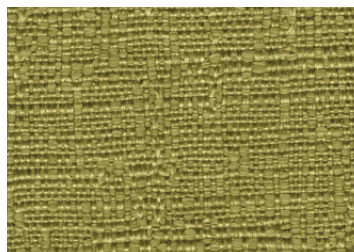
4217



4218






4219



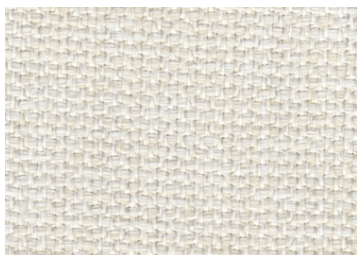
4220

Horizon is a fabric created for outdoor and indoor use. Made with polypropylene fibers, it combines beauty with high performance and durability. This fabric has a remarkable versatility, resistance and 100% recyclability. It presents a soft and silky hand. The finishing consists of a treatment that can be defined ecological, as no water or chemical products are used, only the power of air, constantly monitored at specific temperatures. This collection is water-repellent, stain, mould, moth and bacteria resistant. Its excellent resistance to light and the elements is especially worthy of mention, with high color solidity and mechanical resistance values. The sophisticated color combinations are obtained by means of a mass-dyeing method: color pigments are added to the polymer before the extrusion of the yarn from the spinneret, thus ensuring excellent resistance to atmospheric agents, the capacity to absorb ultraviolet rays, exact color replicability and impeccable uniformity. This technical process also considerably cuts environmental pollution, thanks to the use of less water and energy in the production cycle. Hypoallergenic and anti-odour, polypropylene is an extremely low maintenance fabric. A simple wash at 30/40°C with neutral detergent is sufficient to properly clean it; do not spin dry or iron.

Composition 100% Polypropylene	Martindale 40.000 cycles	Cleaning and maintenance     
--	------------------------------------	--

COVER

Fabric | Collection: Hypnose | Cat. D-H



4204



4205



4206

Hypnose is a fabric created for both indoor and outdoor use; its classic "natté or panama" structure is typical of 100% natural linen fabrics. Hypnose has a pleasant hand with shades typical of natural yarns, achieved by the masterful dosing of color. The collection is characterised by high technical qualities; it can be washed by hand or in the washing machine. For impeccable results, simply add a little neutral detergent and no chemical solvents. This fabric must not be spin dried or ironed.

Composition 100% Polypropylene	Martindale 35.000 cycles	Cleaning and maintenance     
--	------------------------------------	--

COVER

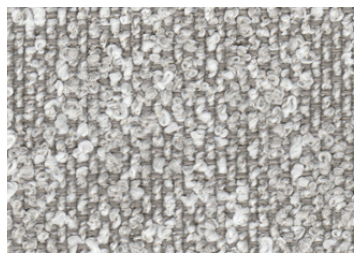
Fabric | Collection: Iris | Cat. E-I



5371



5372



5373



5374



5375

Iris is a fabric created for outdoor and indoor use. It is a dual-colored flamed bouclé of coarse titration, made with polypropylene fibers, so as to combine beauty with high performance and durability. This fabric has a remarkable versatility, resistance and 100% recyclability. The collection presents a soft hand. The finishing consists of a treatment that can be defined ecological, as no water or chemical products are used, only the power of air, constantly monitored at specific temperatures. This collection is water-repellent, stain, mould, moth and bacteria resistant. Its excellent resistance to light and the elements is especially worthy of mention, with high color solidity and mechanical resistance values. The sophisticated color combinations are obtained by means of a mass-dyeing method: color pigments are added to the polymer before the extrusion of the yarn from the spinneret, thus ensuring excellent resistance to atmospheric agent values, the capacity to absorb ultraviolet rays, exact color replicability and utmost uniformity. This technical process also considerably cuts environmental pollution, thanks to the use of less water and energy in the production cycle. Hypoallergenic and anti-odour, polypropylene is an extremely low maintenance fabric. A simple wash at 30/40°C with neutral detergent is sufficient to properly clean it; do not spin dry or iron.

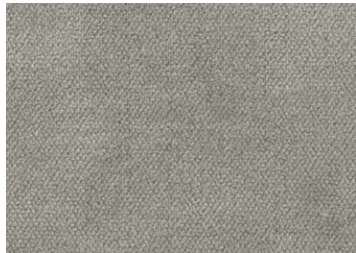
Composition 100% Polypropylene	Martindale 25.000 cycles	Cleaning and maintenance
--	------------------------------------	-------------------------------------

COVER

Fabric | Collection: Mirage | Cat. Top-M



8080



8081



8082



8083

Mirage is a fabric created for outdoor and indoor use. This collection features mass-dyed acrylic fibers, the best for outdoor use. Mass-dyed acrylic fibers are different from yarn-dyed ones as the color is set prior to yarn extraction, thus ensuring higher resistance to UVA rays; it does not become mouldy, even when wet. The fluorocarbon resin finishing ensures superior fabric performance in terms of water and oil repellency. The oil and water repellent "Teflon" finish makes stain removal easier, without compromising color and resistance. Most stains can be cleaned with a water and neutral detergent solution. To remove dirt, simply rub with water (no warmer than 30°C) and neutral detergent, then rinse thoroughly. Mirage fabric can be dry cleaned or machine washed in cold water; do not spin dry. Do not steam iron and do not dry with electric appliances: air dry only. In winter, store the fabric in a dry and ventilated place.

Composition 100% Polypropylene	Martindale 100.000 cycles	Cleaning and maintenance     
--	-------------------------------------	--