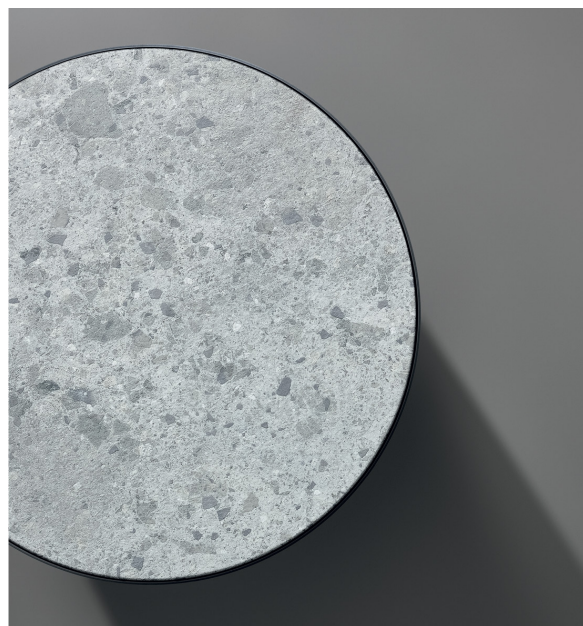
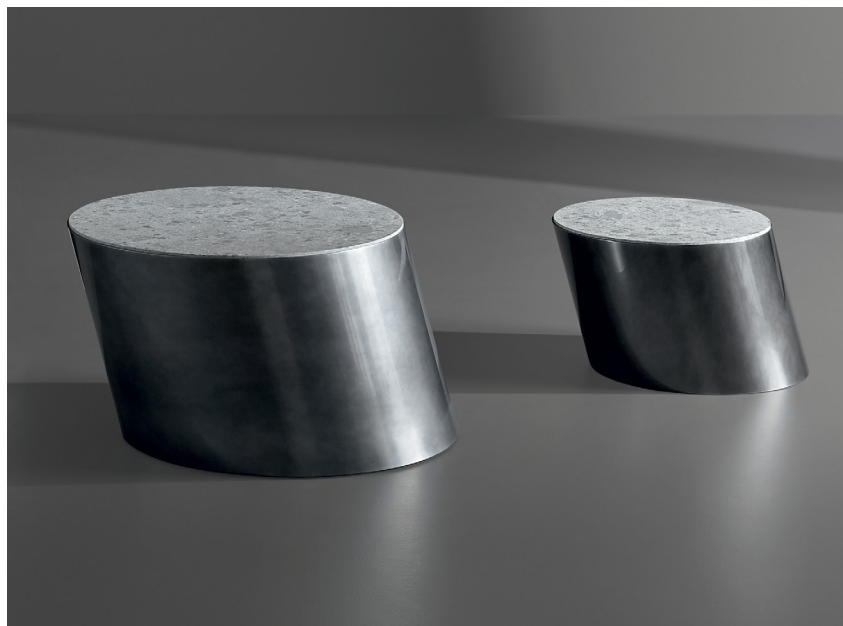


## Pisa

*Design: Mauro Lipparini*

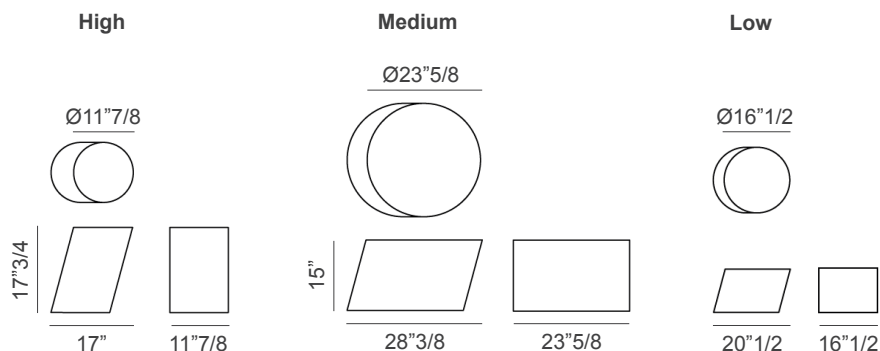


### Description

Coffee table, offered in three different sizes, with a strong character thanks to the monolithic design of its metal base. The signature feature is the angle of the base which leans diagonally like the tower after which it is named. The coffee table assumes its own identity based on the material used for the recessed top, available in ceramic, marble or in the same finish as the base. Made in Italy.

### Dimensions

**High:** 17"W x 11"7/8D x 17"3/4H  
**Medium:** 28"3/8W x 23"5/8D x 15"H  
**Low:** 20"1/2W x 16"1/2D x 11"3/8H



\* For more specifications, please refer to the "Finishes & Materials" PDF