

Product: Elite Sideboard

## COVER

---

### LEATHER > ALLIGATORE



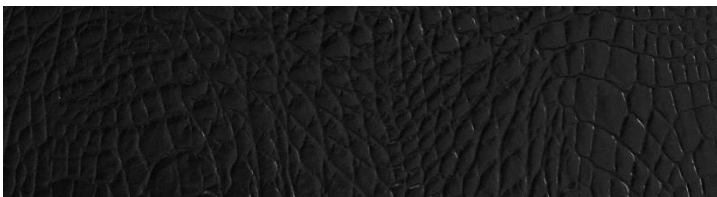
49009



49015



49008



44301

### ALLIGATORE

**Origin:** European and extra  
European bovine hide

**Aniline dyed**

**Tanning at chrome**

**Finishing:** hand buffered

**Type:** Printed

## COVER

---

### LEATHER > GORDON



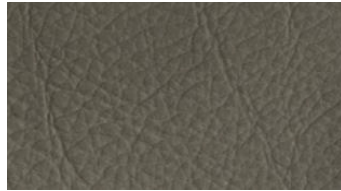
12



14



10



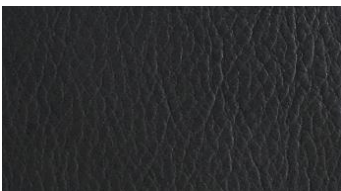
15



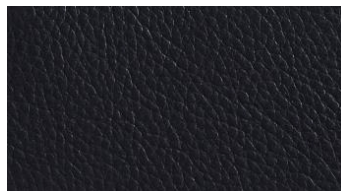
13



04



11



19

### GORDON

**Origin:** European Bulls

**Full grain genuine leather**

**Thickness:** 1,2 mm

**Dye:** Premetallized and acid dyes

**Tanning at chrome**

**Light resistance:** >4/5

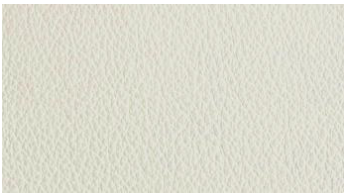
**Tear strenght:** >134 N

**Water-repellent**

## COVER

---

### LEATHER > LEVANTE



635 LATTE



666 GHIACCIO



665 MARMO



629 STONE



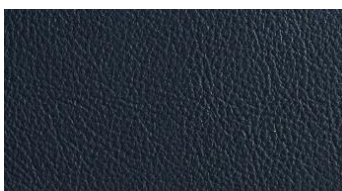
627 FANGO



682 COFFEE



660 ASFALTO



644 NOTTE

### LEVANTE

**Origin:** European Bovine

**Full grain genuine leather**

**Thickness:** 0,9 - 1,1 mm

**Through dye:** Finishing with resins and pigments

**Tanning at chrome**

**Light resistance:** >5

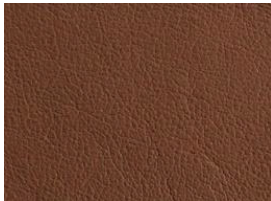
## COVER

---

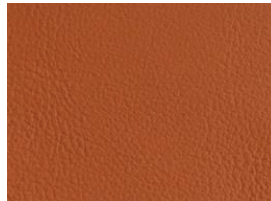
### LEATHER > NUVOLA



198 Ostrica



137 Tabacco



184 Zucca

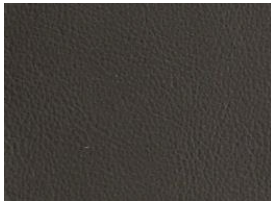
### NUVOLA

Smooth grain leather

Thickness: 1,0 - 1,2 mm



234 Oasi



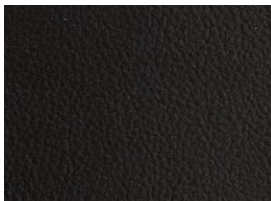
218 Marmotta



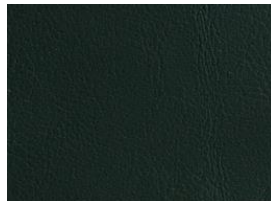
161 Granato



199 Canapa



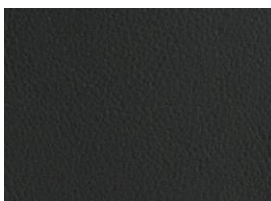
147 Moretto



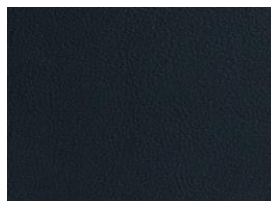
128 Abete



238 Bracco



112 Beola

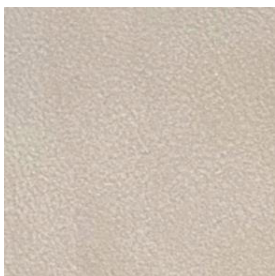


154 Zaffiro

## COVER

---

### LEATHER > ROYAL NABUK



CONCHIGLIA



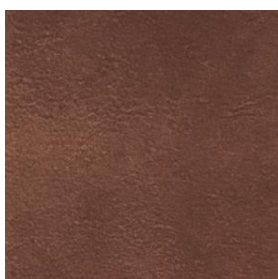
CRETA



CENERE



BISCOTTO



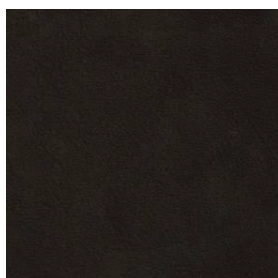
TERRA



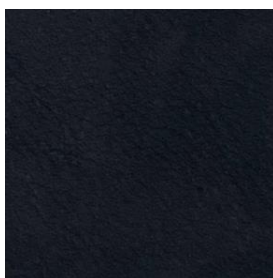
ORIONE



SEPPIA



CAFFE'



OCEANO

### ROYAL NABUK

**Origin:** European Bulls

**Thickness:** 1,2 - 1,4 mm

**Dye:** Premetallized and acid dyes

**Tanning at chrome**

Nabuk - trough dyeing aniline.

This item complies with the 3M test for oleo and hydrorepellency.

The Scotchgard treatment gives more protection and durability to leather.



## COVER

---

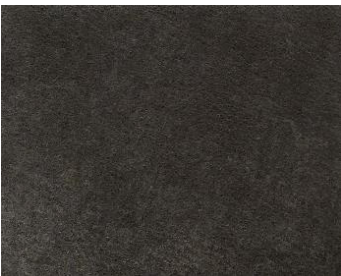
### LEATHER > SUEDE



31



27



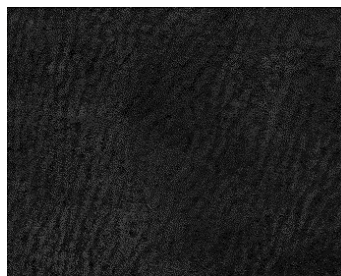
36



34



26



10

### SUEDE

**Origin:** European Bulls

**Thickness:** 1,4 mm

**Dye:** Premetallized and acid dyes

**Tanning at chrome**

**Light resistance:** >3,5 - 4

**Tear strenght:** >5 kg/mm

**Water-repellent**

## COVER

---

### LEATHER > ZAFIRO



1870



1117



1198



1179



1647



1226



1129



1639



1159



1660



1661



1662



1137



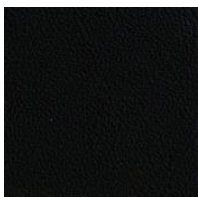
1627



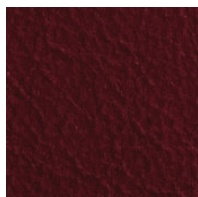
1140



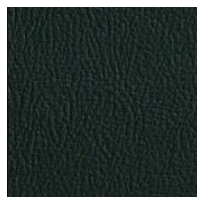
1187



1101



1657



1653



1154

### ZAFIRO

Top grain leather smooth,  
matt surface

**Thickness:** 1,0 - 1,2 mm

## COVER

### LEATHER > ASTON



COL. 01



COL. 02



COL. 07



COL. 11



COL. 54



COL. 24



COL. 18



COL. 19



COL. 20



COL. 35



COL. 13



COL. 39



COL. 22



COL. 55



COL. 23



COL. 27



COL. 31



COL. 32

### ASTON

**Origin:** European Bulls

**Thickness:** 1,2 mm

**Dyeing:** Aniline

**Tanning at chrome**

**Finishing:** Semi-glossy effect with water-based varnish

**Light resistance:** >4/5

**Tear strenght:** >134 N/mm

**Water-repellent**

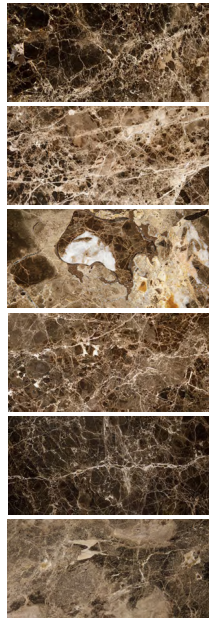


## TOP

### Marble



EXAMPLE OF  
GRAIN AND COLOR



#### EMPERADOR DARK

##### TECHNICAL FEATURES

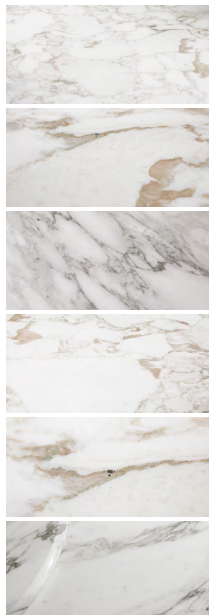
This material, coming from Spain, is a spotted brown color with varying intensities of shades of brown and white grains. In its natural form, it has cracks, which in the processing stage are closed with resin and / or pieces of the same material.

The surface is thus uneven due to the presence of natural micro-holes that determine the characteristic of the marble. These microholes are also create a different refraction of light compared to the polished parts. Emperador Dark is a natural product, whose unique characteristics, which upon unthorough examination may be mistakenly considered "defects", are to all intents and purposes distinctive characteristics of the material.

The processing is carried out with care and craftsmanship, using the latest generation of machinery; for the final polishing natural waxes are used, prone to respect the very essence of the nature of the marble itself. For a proper sealing of the material it is advisable not to pour acidic substances such as carbonated and / or alcoholic drinks, oil, wine, vinegar and various citrus fruits or in any case to remove them immediately, so they can't erode the polish.



EXAMPLE OF  
GRAIN AND COLOR



#### CALACATTA GOLD

##### TECHNICAL FEATURES

Calacatta Gold is a marble from the Apuan Alps extraction area (Carrara marble). Although having the same origins as Carrara marbles (generally "white"), it differs in its ivory / butter color with important grains ranging from golden to all shades of brown to greens and grays.

The pattern of the grain varies continuously in the slabs and makes it possible to have areas with pronounced alternating grain and others with large white spaces, thus creating a particular pebbled grain highly valued in the production of tables and bathroom tops.

Being a sedimentary sandstone marble, it also contains various types of gray crystals and stones unevenly distributed which are to be considered an intrinsic characteristic of the marble itself. Being mainly formed by microcrystals of calcium carbonate, for a proper sealing of the material, it is advisable not to pour acid substances such as carbonated and / or alcoholic drinks, oil, wine, vinegar and various citrus fruits or in any case to remove them immediately, so that cannot affect the polish.

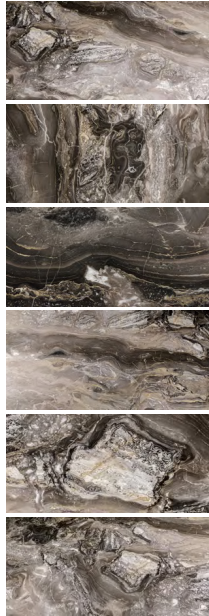


## TOP

### Marble (cont.)



EXAMPLE OF  
GRAIN AND COLOR



#### OROBICO ARABESCATO

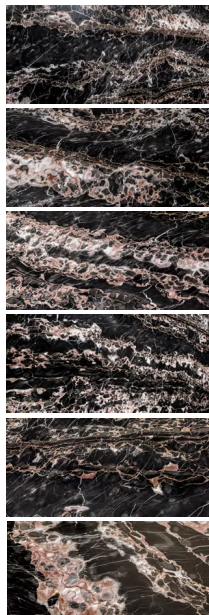
##### TECHNICAL FEATURES

The Arabescato Orobico Grigio is a limestone gravel extracted in Val Brembana with varying sizes of elements, from several millimeters to tens of centimeters. The colors of the elements are very different from each other, varying from gray to white with the possibility of golden hues. The resistance to compressive stress and flexibility is high, the wear resistance is good, the very low imbibition coefficient ensures negligible porosity, which results in a low tendency of alteration; therefore, overall, the values indicate that this type of material has a very good and perfectly compatible features for use as a high traffic surface.

Arabescato Orobico Grigio is often treated with resins in order to eliminate the natural cracks that may be present on the slabs and to maximize their resistance. Arabescato Orobico Grigio is a natural product, whose unique characteristics, which upon unthorough examination may be mistakenly considered "defects", are to all intents and purposes distinctive characteristics of the material. For a proper sealing of the material, it is advisable not to pour acid substances such as carbonated and / or alcoholic drinks, oil, wine, vinegar and various citrus fruits or in any case to remove them immediately, so that cannot affect the polish.



EXAMPLE OF  
GRAIN AND COLOR



#### PORTORO IMPERIALE

##### TECHNICAL FEATURES

The Portoro Imperiale is a limestone gravel coming from Liguria and more precisely from Portovenere (La Spezia). It has a fine-grained background of an intense black color crisscrossed by a dense network of grains, often in a zig-zag pattern, oriented along the cut and with streaks and spots of several millimeters in size. These grains of intense yellow and gold can be almost orange / sunset orange. However, in some parts of the quarry, blocks with different aesthetic characteristics can be extracted.

The background is always an intense black and there are filiform veins or viens of greater thickness, which are usually whitish. These grains, distributed in various ways, can also be concentrated in areas of the slab without following the direction of its cut. The bottom may show opalescence.

The processing is carried out with care and craftsmanship, using the latest generation of machinery; for the final polishing natural waxes are used, prone to respect the very essence of the nature of the marble itself. For a proper sealing of the material it is advisable not to pour acidic substances such as carbonated and / or alcoholic drinks, oil, wine, vinegar and various citrus fruits or in any case to remove them immediately, so they can't erode the polish.

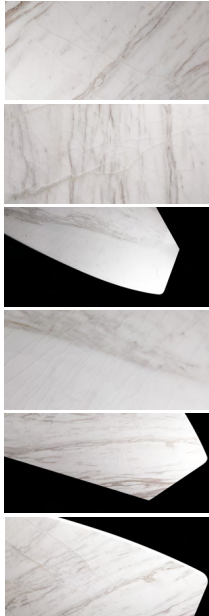


## TOP

### Marble (cont.)



EXAMPLE OF  
GRAIN AND COLOR



#### CALACATTA ROYAL

##### TECHNICAL FEATURES

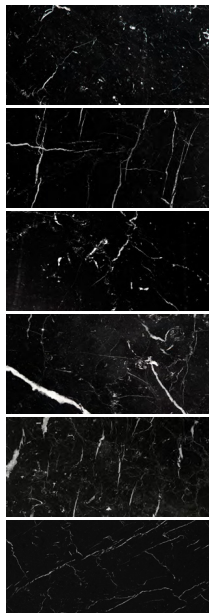
Calacatta Royal is a precious marble of Greek origin extracted from the mountains of the Volakas area located in the north of Greece. Natural stone of a recognized elegance, with an intense white background, it carries gray, cream, hazelnut and pinkish grains, from fine to marked intensities; sometimes these can tend towards brown or purple.

The grains can have a parallel or irregular pattern that create the characteristic clouding of the material resembling some marbles of Apuan origins. The slabs of Calacatta Royal often need resin finishing to consolidate the natural micro-cracks present on the slabs. The processing is carried out with care and craftsmanship, using the latest generation of machinery; for the final polishing natural waxes are used, prone to respect the very essence of the nature of the marble itself.

For a proper sealing of the material it is advisable not to pour acidic substances such as carbonated and / or alcoholic drinks, oil, wine, vinegar and various citrus fruits or in any case to remove them immediately, so they can't erode the polish.



EXAMPLE OF  
GRAIN AND COLOR



#### NERO MARQUINIA

##### TECHNICAL FEATURES

The Nero Marquina marble is a marble of Spanish origin with a fine-grained black background crisscrossed by a pattern of white grains with thicknesses ranging from millimeters to centimeters. These, rather linear grains, are quite continuous; there is no common direction but they have a very different orientations from each other. There may be white snails and on rare occasion you may find white fossils several centimeters in dimension.

The processing is carried out with care and craftsmanship, using the latest generation of machinery; for the final polishing natural waxes are used, prone to respect the very essence of the nature of the marble itself. For a proper sealing of the material it is advisable not to pour acidic substances such as carbonated and / or alcoholic drinks, oil, wine, vinegar and various citrus fruits or in any case to remove them immediately, so they can't erode the polish.

## TOP

---

Marble (cont.)



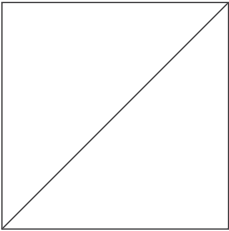
| FRAPPUCCINO



## INSERTS / TOP FRAME

---

### Metal



Stainless steel gold

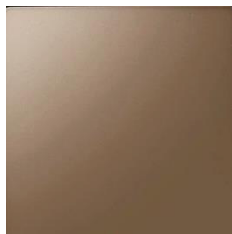
## INSERTS / TOP FRAME / FEET / BASE

---

### Metal



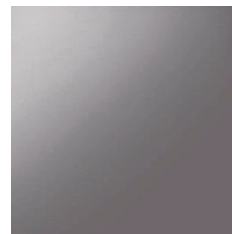
Stainless steel  
antique bronze satin



Stainless steel  
shaded glossy



Stainless steel  
shaded satin



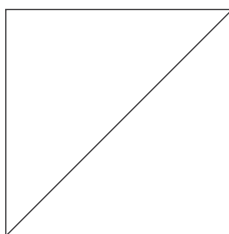
Stainless steel  
chrome black



Shining stainless steel

## FEET

---



Chrome steel



Shining stainless steel  
dipped in 24 kt gold