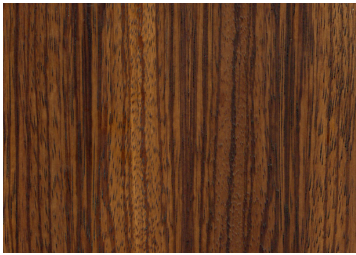


Product: Wall Street Desk

TOP

Veneered wood



Zebrano



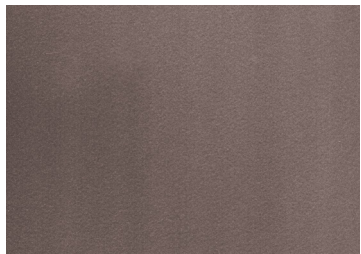
Thermo-treated Eucalyptus

LEGS

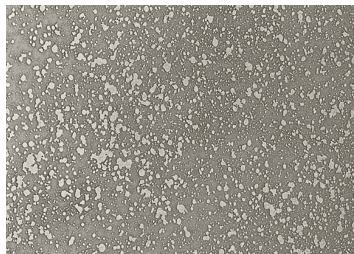
Metal



Micaceous brown



Oxy grey



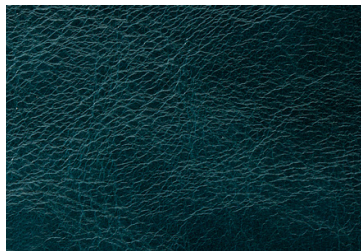
Silver grey magnesium
textured

TOP PAD

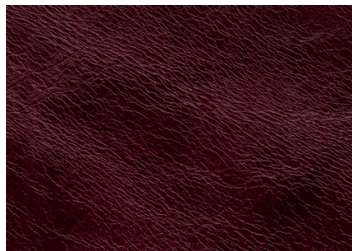
Leather | Category: Pelle B+ | Collection: Pelle Leonardo



1001 - Vodka



1002 - Assenzio



1003 - Chianti



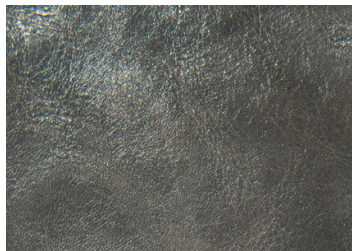
1007 - Montecristo



1008 - Sacher



1010 - Licorice



1011 - Ash

Aniline leathers are of the best available quality as they are selected among hides of first choice. Aniline leathers are the most natural leathers as no finishing is applied on the surface to hide imperfections, so that they retain the hide's natural grain. The imperfections are not a fault but a characteristic of this kind of leather.

Vegetable-tanned leather is a natural product: the several color shades, the unique scent, the small marks and grain are to be considered as the authentic proof of the quality of this leather. It is normal that, during the tanning process and with the use, the phenomenon of loose grain creates empty zones inside the leather with an indelible lightening effect. Another characteristic of vegetable-tanned leather is the light color variance in leathers supplied at different times, which is due to the presence of natural oils and to the different color absorption of the leather grain. Another characteristic of vegetable-tanned leather is the color change when exposed for a continuous period to a light source, both natural (sun) and artificial (spotlights, lamps, neon lights). This article gets easily scratched. Small scratches can be removed by rubbing the leather with a wool cloth. Never use abrasive or aggressive products like solvents and stain removers.

Leather type	Thickness	Origin	Tannage	Dyeing	Finishing
Full grain aniline	1,8 mm	European raw hides	Vegetal	Through-dyeing Aniline	Aniline

TOP PAD

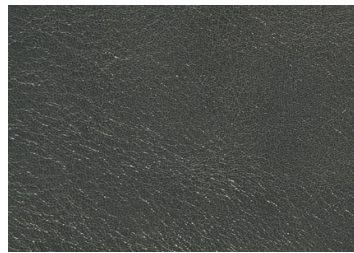
Leather | Category: Pelle B+ | Collection: Cuoio Tribe



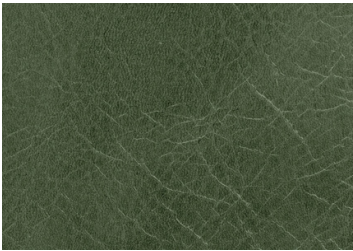
1030



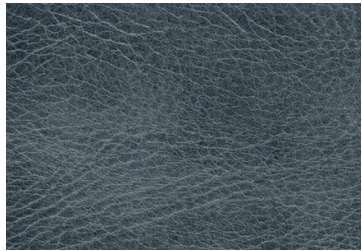
1031



1032



1033



1034

Aniline leathers are of the best available quality as they are selected among hides of first choice. Aniline leathers are the most natural leathers as no finishing is applied on the surface to hide imperfections, so that they retain the hide's natural grain. The imperfections are not a fault but a characteristic of this kind of leather. The use of oils in the finishing process creates a "Pull-Up" effect, which means empty zones inside the leather with an indelible lightening effect. "Pull-Up" leathers grow old, but they don't get damaged. The changes with use and time give them a vintage look and are the guarantee of the naturalness of the product. The leather is milled to obtain an orange-peel effect and light color variances, which give depth to the article. As it is a vegetable tanned leather, the color changes when exposed for a continuous period to a light source, both natural and artificial. This article gets easily scratched. Small scratches can be removed by rubbing the leather with a wool cloth. Never use abrasive or aggressive products like solvents and stain removers.

Leather type Full grain aniline	Origin European raw hides	Tannage Vegetal	Dyeing Aniline drum through-dyeing	Finishing Aniline
---	--	---------------------------	---	-----------------------------

TOP PAD

Leather | Category: Pelle B+ | Collection: Cuoio Dirt



1020

Aniline leathers are of the best available quality as they are selected among hides of first choice. Aniline leathers are the most natural leathers as no finishing is applied on the surface to hide imperfections, so that they retain the hide's natural grain. The imperfections are not a fault but a characteristic of this kind of leather. This article is characterized by evident wrinkles. The vintage look of this leather is due to white waxes that are spread on the surface in a not homogeneous way. Never use abrasive or aggressive products like solvents and stain removers. Other characteristics: vintage and wrinkled look, waxed aged.

Leather type Full grain aniline	Origin European raw hides	Tannage Vegetal	Dyeing Aniline drum through-dyeing	Finishing Water-based
---	--	---------------------------	---	---------------------------------