

Alexander

Design: Giuseppe Lasparra



Description

The Alexander bar comes with a lower top in satin steel, with basin and taps; the top is also available without accessories. The shaped upper top is 1/8" thick bronze or smoky mirror with bevel. On request, it is possible to insert an LED light with frosted glass diffuser. The cabinet's frame is covered in leather or cashmere from the "Loro Piana Interiors" catalogue, but only the front part can be covered in leather from the P.3 Suede and Lusso ranges, finished with 3D effect leather with "diamond" or "sequence" decor. The cabinet's doors can be in ebony wood with internal finish in dark stained zebrano wood, or in Canaletto walnut with internal finish in Canaletto walnut. Ground metal edges in the following finishes: bright light gold, Champagne matt gold, bright chrome, bright black chrome or matt satined bronze. On request, a mini wine refrigerator is available.

Finishes and materials

Frame: Covered in Leather: C.O.L or categories 3, 6, 9, 15 or 18. Fabric: categories WS or WV. 3D effect with “diamond” or “sequence” decoration (P.3).

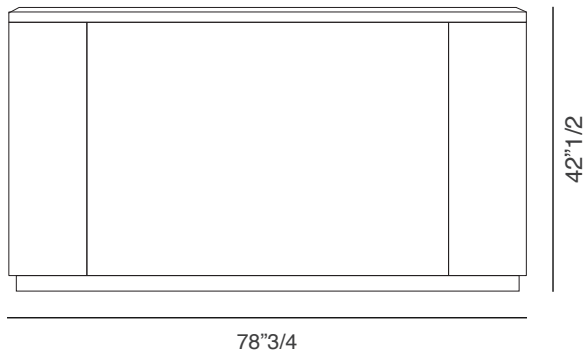
Lower Top: Satin steel.

Upper Top: 1/8” thick bronze or smoky mirror with bevel.

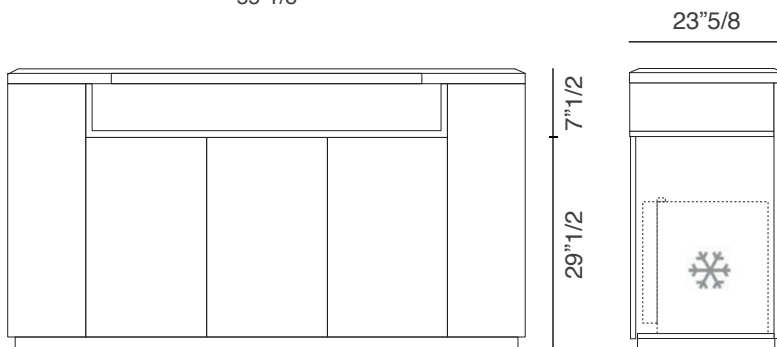
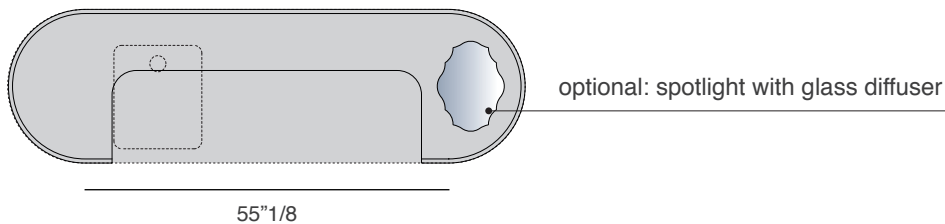
Doors: Ebony wood with internal finish in dark stained zebrano wood, or Canaletto walnut with internal finish in Canaletto walnut.

Edges: Ground metal: bright light gold, Champagne matt gold, bright chrome, bright black chrome or matt satined bronze.

(For more specifications, please refer to “Finishes & Materials”)

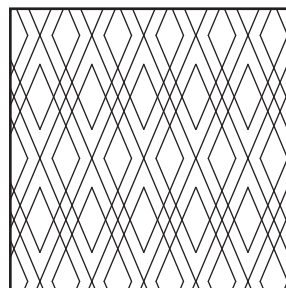
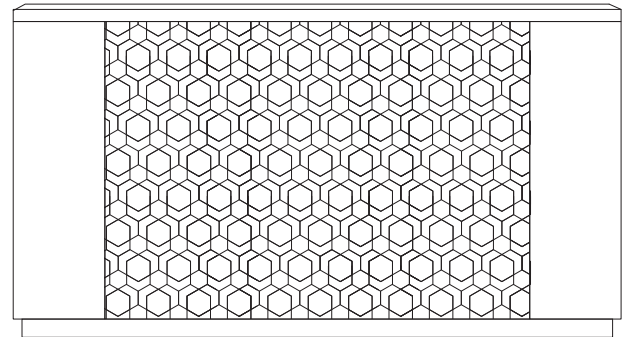
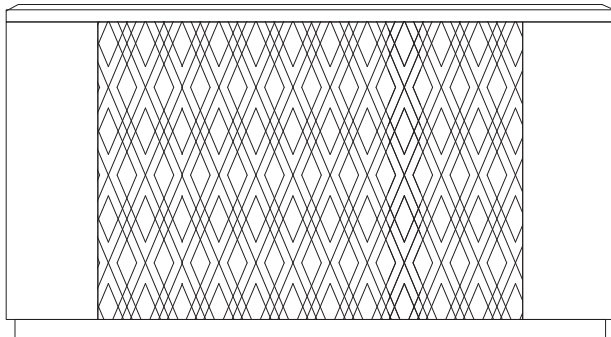
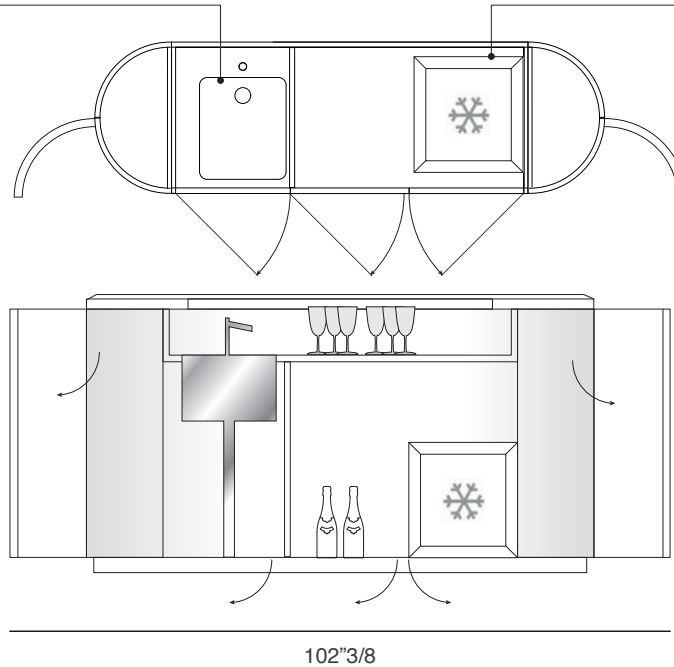


Alexander Bar: 78"3/4W x 23"5/8D x 42"1/2H

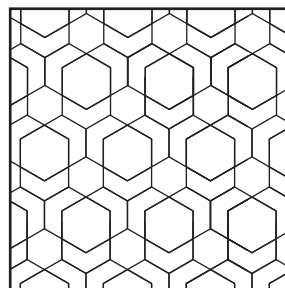


wash-basin with drain-pipe

optional: wine refrigerator



DIAMOND



SEQUENCE