

Mirage

Design: Giuseppe Lasparra



Description

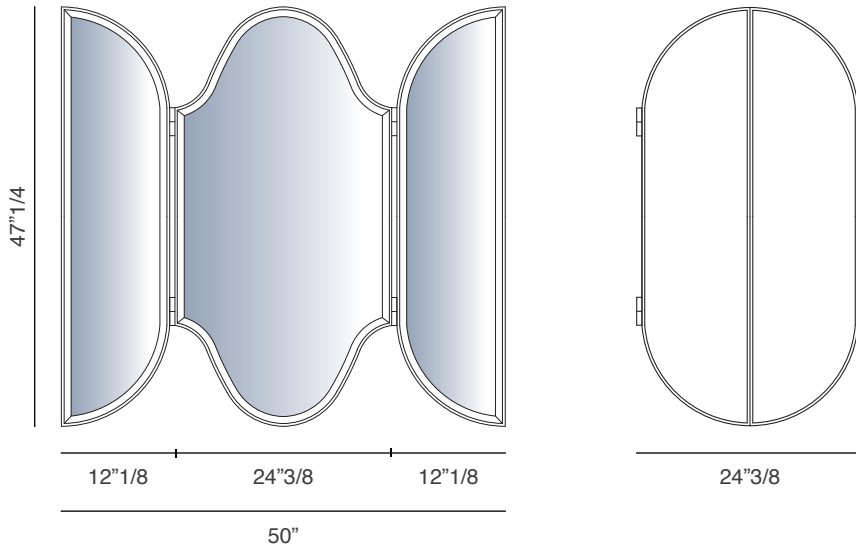
The Mirage mirror has batwing doors covered in category P.3 leather (Suede and Lusso) with smooth or 3D effect (relief with “Diamond” or “Sequence” decoration). The mirror has a 1/8" bevel. The load-bearing structure in ground metal comes in: bright light gold, Champagne matt gold, bright chrome, bright black chrome or matt satined bronze.

Finishes and materials

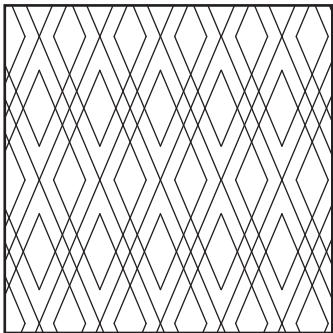
Structure: Metal: bright light gold, Champagne matt gold, bright chrome, bright black chrome or matt satined bronze.

Covers: Leather: category P.3. With smooth or 3D effect (relief with “Diamond” or “Sequence” decoration).

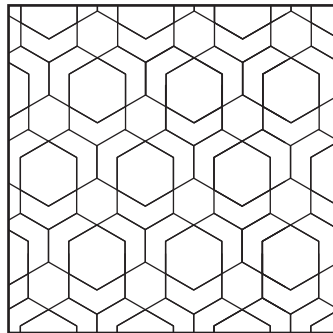
(For more specifications, please refer to “Finishes & Materials”)



Mirage Mirror: 24"3/8W x 47"1/4H



DIAMOND



SEQUENCE

