

## Noe

*Design: Lievore Altherr Molina*



### Description

Sofa with plywood base-panel, padding made partly of rigid self-supporting polyurethane, forming the framework, and partly of polyurethane fibres in different densities, suitable to guarantee high comfort.

The inside of the backrest and of the seat is covered by "BALL" type polyester fibre contained in a lining made of many different compartments obtained with numerous partitions.

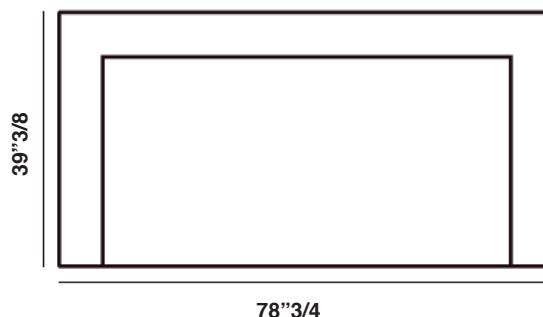
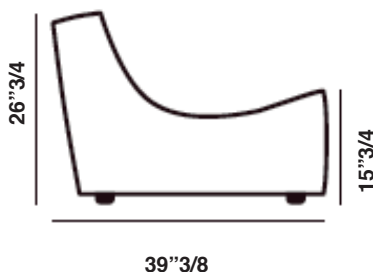
All the external parts are instead covered with flake polyester fibre covered, in its turn, by cotton cloth. The "BALL" type polyester padding provides special comfort, as well as giving a particularly aged appearance specific to this fibre that must be accepted as it is intentional. Black lacquered beech feet.

### Dimensions

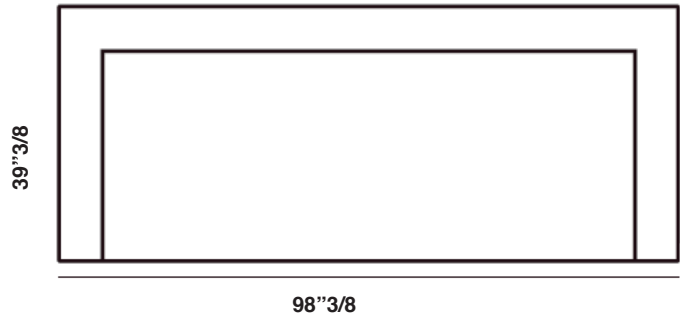
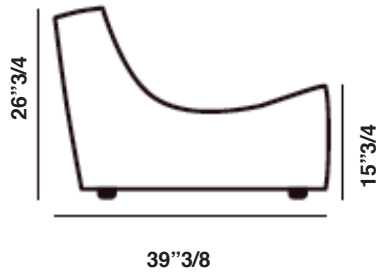
**Noe Sofa 200:** 78"3/4W x 39"3/8D x 26"3/4H - **Seat Height:** 15"3/4

**Noe Sofa 250:** 98"3/8W x 39"3/8D x 26"3/4H - **Seat Height:** 15"3/4

#### Noe Sofa 200



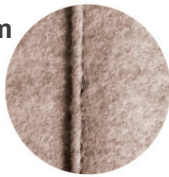
## Noe Sofa 250



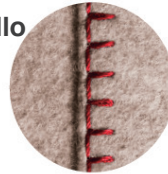
## Cover Finishes



Simple  
Lapped seam



Stitching  
Punto Cavallo



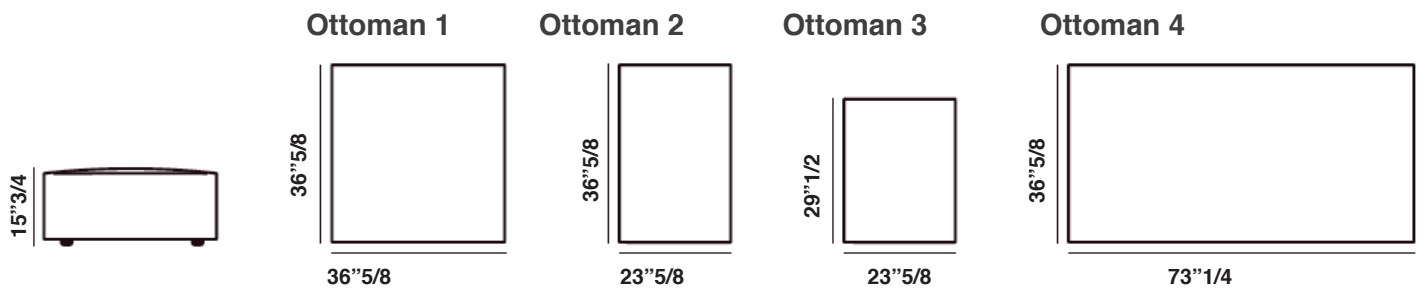
## Ottomans Dimensions

**Ottoman 1:** 36" <sup>5</sup>/<sub>8</sub>W x 36" <sup>5</sup>/<sub>8</sub>D x 15" <sup>3</sup>/<sub>4</sub>H

**Ottoman 2:** 23" <sup>5</sup>/<sub>8</sub>W x 36" <sup>5</sup>/<sub>8</sub>D x 15" <sup>3</sup>/<sub>4</sub>H

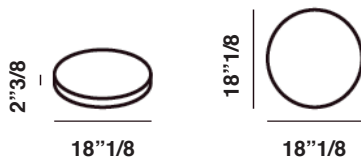
**Ottoman 3:** 23" <sup>5</sup>/<sub>8</sub>W x 29" <sup>1</sup>/<sub>2</sub>D x 15" <sup>3</sup>/<sub>4</sub>H

**Ottoman 4:** 73" <sup>1</sup>/<sub>4</sub>W x 36" <sup>5</sup>/<sub>8</sub>D x 15" <sup>3</sup>/<sub>4</sub>H

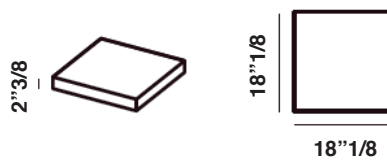


## *Cushions*

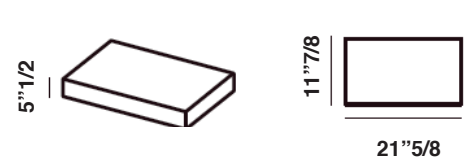
Round Cushion / Armrest



Square Cushion / Armrest



Armrest



## *Finishes and materials*

**Frame:** Plywood base-panel.

**Padding:** Rigid self-supporting polyurethane

**Upholstery:** Fabric, Leather or C.O.M (Customer's fabric)

**Stitching:** Simple lapped seam or "Punto Cavallo".

*(For more specifications, please refer to "Finishes & Materials")*