

Noe

Design: Lievore Altherr Molina



Description

Lounge chair with plywood base-panel, padding made partly of rigid self-supporting polyurethane, forming the framework, and partly of polyurethane fibres in different densities, suitable to guarantee high comfort.

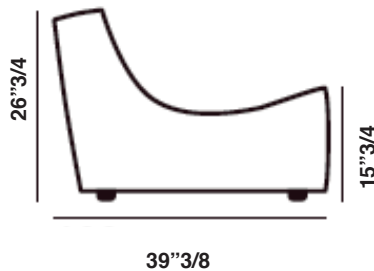
The inside of the backrest and of the seat is covered by "BALL" type polyester fibre contained in a lining made of many different compartments obtained with numerous partitions.

All the external parts are instead covered with flake polyester fibre covered, in its turn, by cotton cloth. The "BALL" type polyester padding provides special comfort, as well as giving a particularly aged appearance specific to this fibre that must be accepted as it is intentional. Black lacquered beech feet.

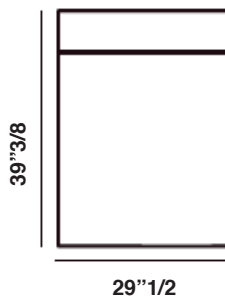
Dimensions

Noe Lounge Chair 75: 29"1/2W x 39"3/8D x 26"3/4H - **Seat Height:** 15"3/4

Noe Lounge Chair 93: 36"5/8W x 39"3/8D x 26"3/4H - **Seat Height:** 15"3/4



Lounge Chair 75



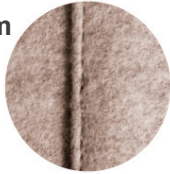
Lounge Chair 93



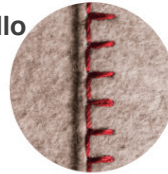
Cover Finishes



**Simple
Lapped seam**



**Stitching
Punto Cavallo**



Finishes and materials

Frame: Plywood base-panel.

Padding: Rigid self-supporting polyurethane

Upholstery: Fabric, Leather or C.O.M (Customer's fabric)

Stitching: Simple lapped seam or "Punto Cavallo".

(For more specifications, please refer to "Finishes & Materials")