

De-Symetria

Design: Luca Scacchetti



Description

Reception desk available with top in extraclear tempered glass, tempered glass varnished (black, white or RAL 1019).

Structure in wood, varnished glass or covered in leather or saddle leather.

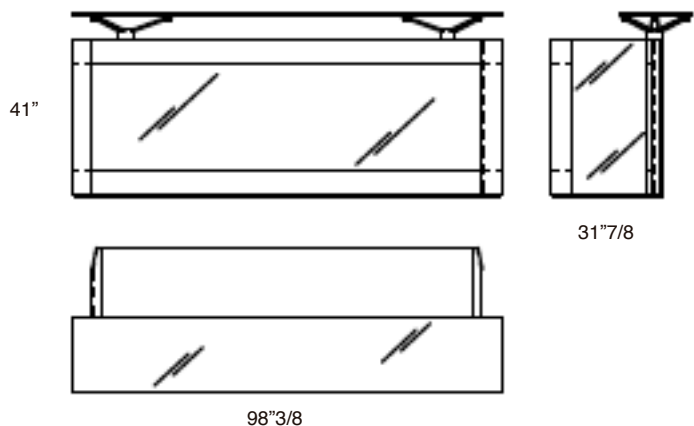
Wood and varnished glass structure are available with leather or saddle leather edges.

The public top is always in glass.

The metallic parts are available in chromed steel only.

Reception desk Dimensions:

98"3/8W x 31"7/8D x 41"H



Finishes and materials

Worktop: Black laminate, Lati wood, ebony wood.

Public top: Extraclear tempered glass, tempered glass varnished (black, white or RAL 1019).

Front and sides: Lati wood, ebony wood, leather, saddle leather, tempered glass varnished (black, white or RAL 1019).

Edges: Leather or saddle leather.

Baseboard: Black laminate.

(For more specifications, please refer to "Finishes & Materials")