

Oscar

Design: Giuseppe Viganò



Description

Series of cupboards and sideboard with hyperboloid shaped base in glass fibre, with internal structure in painted metal, covered in range leathers.

Cupboard in wood or leather - Version A:

Cupboard with structure in wood or covered in leather.

Doors in the same wood as the container structure or covered in leather from the range.

Interior covered in cat. P.3 Suede leather, the container is outfitted with a drawer with metal front and a central shelf in transparent tempered glass 3/8".

Rear in neutral mirror. Lighting with dimmable LED strip. A touch switch turns the light on.

Handles in metal with insert in marble from the range (coordinated with the top).

Edges and underbase plate in different metal finishes.

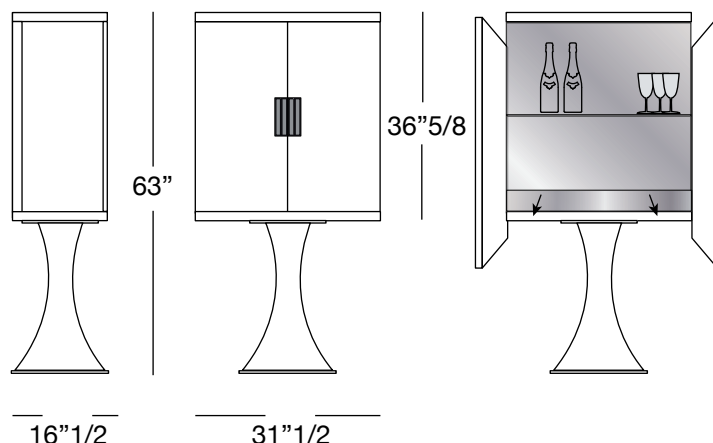
1/8" "Bronze or Smoky mirror top with bevel.

Oscar

Dimensions

31"1/2W x 16"1/2D x 63"H
Cod. Serie Y 722

A__ / Cupboard in wood or leather /



Finishes and materials

Wood container: glossy/matt ebony, glossy/matt Canaletto walnut, glossy/matt Sucupira Luxury or glossy walnut burl wood.

Cover in Leather: Cat. P.03, Cat. P.06, Cat. P.09, Cat. P.12, Cat. P.15 or Cat. P.18.

Doors and drawer fronts: in the same wood as the container structure or covered in leather from the range.

Interior in: Covered in cat. P.3 Suede leather.

Internal drawer in: Metal front for the range.

Internal shelf in: Transparent tempered glass.

Base in: Glass fiber, with internal structure in painted metal, covered in range leathers

Handles in: Metal with insert in marble from the range.

Edges and underbase plate in metal: bright light gold, matt Champagne gold, bright chrome, bright black chrome or matt satin bronze.

Top in: Bronze or Smoky mirror with bevel.

Suggested leather finishes: P.3 Sude and P.15 SPECIAL Cocco.

(For more specifications, please refer to "Finishes & Materials")

