

Vela

Design: Pininfarina



Description

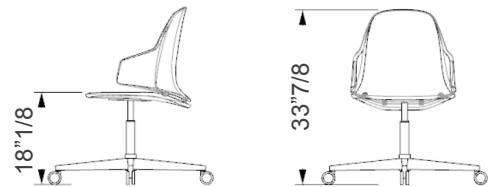
Office chair with shell in resin and wood with upholstery in Fabric or Leather. Upholstery can be all in same Leather or with exterior in Leather Cat. C and interior in Fabric Cat. Super/Extra/Luxury. Internal back with quilting. Base in polished aluminum or in satin finish: brass, dark brass. Base with pump to adjust the height and with wheels.

Dimensions

22"W x 20"D x 33"7/8H

Seat height: 18"1/8

Note: Width and Depth correspond to the seat without considering the base.

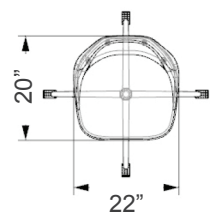


Finishes and materials

Cover: All in same Leather or with exterior in Leather Cat. C and interior in Fabric Cat. Super/Extra/Luxury.

Base: Polished aluminum or in satin finish: brass, dark brass.

Shell: Resin and wood.



(For more specifications, please refer to "Finishes & Materials")