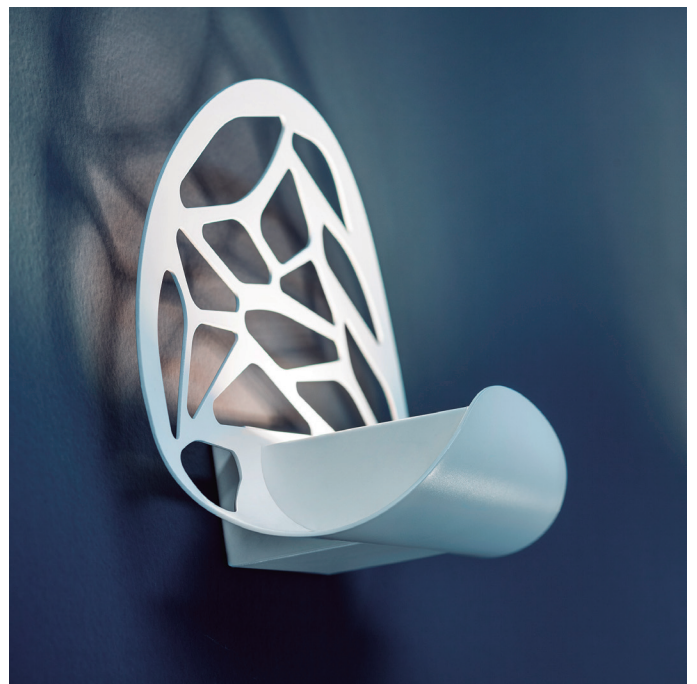
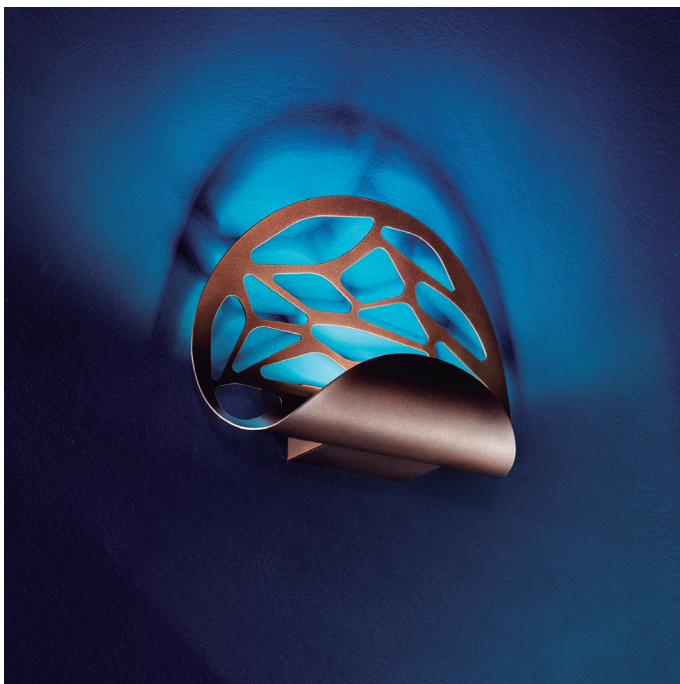


Kelly Wall Lamp

Design: Andrea Tosetto



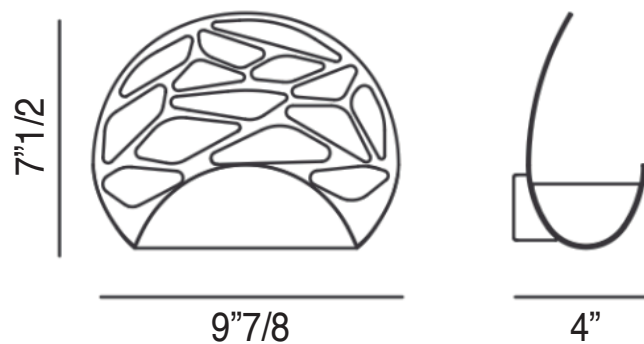
Description

Wall lamp with metal structure in matt white or coppery bronze finish. The laser cutting allows full access to the light source creating intriguing and precious light effects and shades, with its simple and timeless design it has already become a must for any Modern project.

Mounts to a 4" Standard J-Box. Plate adaptor included. LED with direct power supply to the AC line voltage (driver not required). Dimmable with phase cut dimmer. Mud Kit available upon request. LED included. Made in Italy.

Dimensions

9"7/8W x 4"D x 7"1/2H



Finishes and materials

Frame: Metal in Matt white 9010 or Coppery bronze

(For more specifications, please refer to "Finishes & Materials")