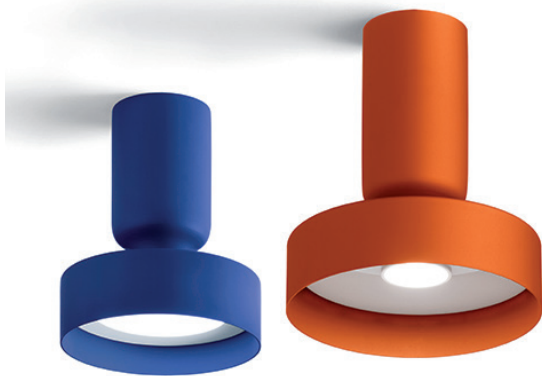


Hammer

Design: Paolo Grasselli



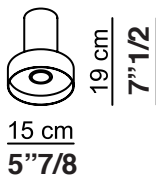
Description

Recessed lamp in two sizes.
Turned painted metal body available in different colors.

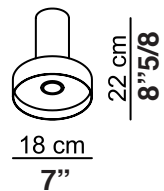
Dimensions

Ø 5"7/8 x 7"1/2H
Ø 7" x 8"5/8H

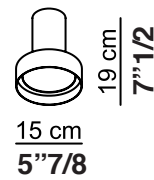
**Hammer 15
GU10**



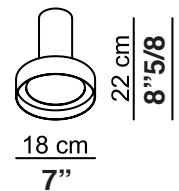
**Hammer 18
GU10**



**Hammer 15
Pannel LED**



**Hammer 18
Pannel LED**



LIGHT SOURCE			
	lamp type	luminous efficacy	light colour
Hammer 15	1 x dichroic GU10 LED D 50	-	2700K
	1 x pannel LED 9W	1 x 830 lm	2800K
Hammer 18	1 x dichroic GU10 LED D 50	-	2700K
	1 x pannel LED 12W	1 x 1110 lm	2800K

Finishes and materials

Structure in Metal: - Basic: White.
- Special colors (lead grey, brick, lime, bluette, blue cina and matt brass).

(For more specifications, please refer to "Finishes & Materials")