

Wonder

Design: Bartoli Design



Description

Suspension lamp with metal structure in the colors: matt gold, matt copper or matt graphite. Shade in transparent or smoked borosilicate glass. Available in three sizes: Mini, Small and Large. Single canopy available in the same finish of the structure. Can be used as a single element or in cluster.

Dimensions

Mini: Ø6"1/4 x 17"3/8H

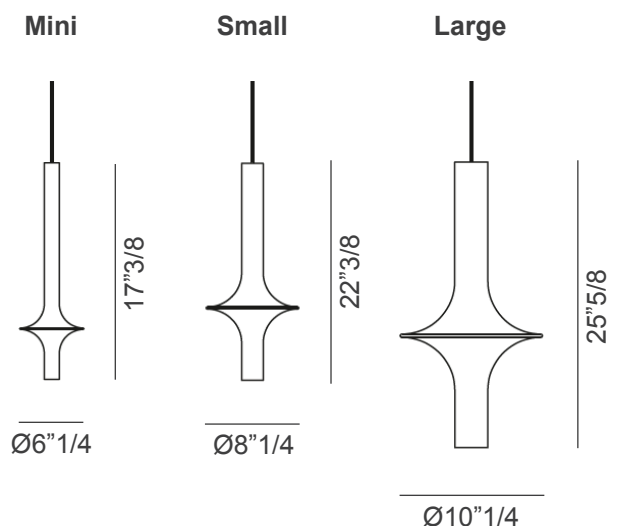
Small: Ø8"1/4 x 22"3/8H

Large: Ø10"1/4 x 25"5/8H

Cable length: 78"3/4

Light Source:

1 x 6W LED



Finishes and materials

Structure: Metal in the colors: Matt Gold, Matt Copper or Matt Graphite.

Shade: Transparent or Smoked Borosilicate Glass.

(For more specifications, please refer to "Finishes & Materials")

Wonder

Plates & Canopies

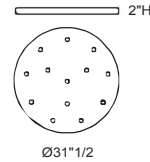
Metal plate in the finishes
White Lacquered with power source.

ELECTRIFIED PLATES

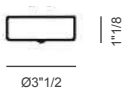
B) ROUND PLATE
MAX 3 FITTINGS
BIANCO/WHITE
Ø11⁷/₈ x 2"H



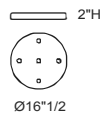
G) ROUND PLATE
MAX 13 FITTINGS
BIANCO/WHITE
Ø31¹/₂ x 2"H



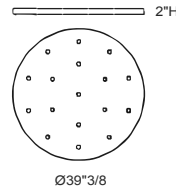
T) SINGLE CANOPY WITH POWER SOURCE
SAME FINISH AS STRUCTURE
Ø3¹/₂ x 1¹/₈"H



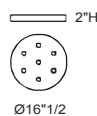
C) ROUND PLATE
MAX 5 FITTINGS
BIANCO/WHITE
Ø16¹/₂ x 2"H



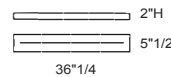
H) ROUND PLATE
MAX 17 FITTINGS
BIANCO/WHITE
Ø39³/₈ x 2"H



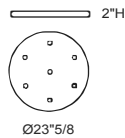
D) ROUND PLATE
MAX 7 FITTINGS
BIANCO/WHITE
Ø16¹/₂ x 2"H



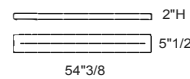
I) LINEAR PLATE
MAX 8 FITTINGS
BIANCO/WHITE
36¹/₄W x 5¹/₂D x 2"H



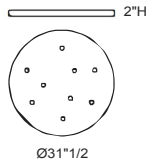
E) ROUND PLATE
MAX 7 FITTINGS
BIANCO/WHITE
Ø23⁵/₈ x 2"H



J) LINEAR PLATE
MAX 8 FITTINGS
BIANCO/WHITE
54³/₈W x 5¹/₂D x 2"H



F) ROUND PLATE
MAX 9 FITTINGS
BIANCO/WHITE
Ø31¹/₂ x 2"H



K) RECTANGULAR PLATE
MAX 7 FITTINGS
BIANCO/WHITE
35³/₈W x 17³/₄D x 2"H

