

Clizia

Design: Adriano Rachele



Description

Suspension lamp consisting of colored interlocked squares in Opalflex®, manually assembled to create a perfect balance of reflections and transparencies. All of the available versions marry aesthetics with functionality, featuring a magnetic anchoring system, that allows for easy installation and cleaning. Available in five different colors and also in ceiling/wall, floor and table versions. Made in Italy.

Finishes and materials

Diffuser: Opalflex®

■ BLACK □ WHITE ■ ORANGE



Description

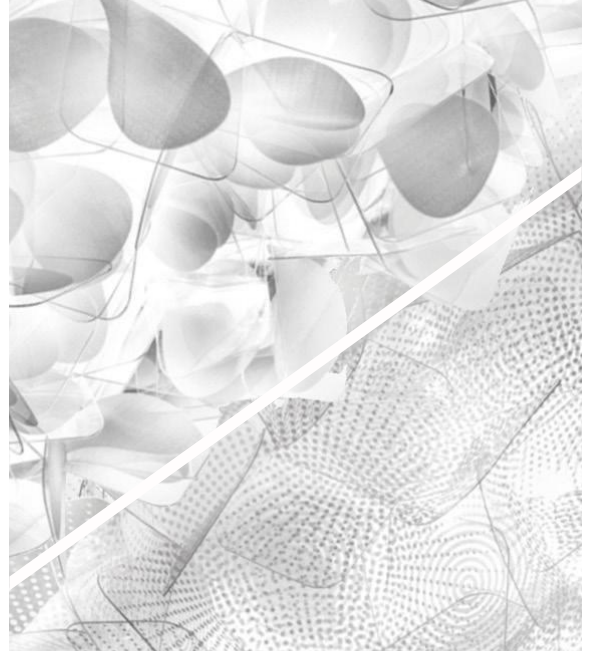
Ceiling or wall lamp consisting of interlocked squares in Cristalflex®, manually assembled to create a perfect balance of transparencies and reflections. Two finishes available: Pixel, a high-tech pattern in soft tones and Mama non Mama, a delicate petal pattern. All of the available versions marry aesthetics with functionality, featuring a magnetic anchoring system, that allows an easy installation and cleaning. Available in more finishes and also in suspension, floor or table versions. Made in Italy.

Finishes and materials

Diffuser: Cristalflex®



(For more specifications, please refer to “Finishes & Materials”)



Description

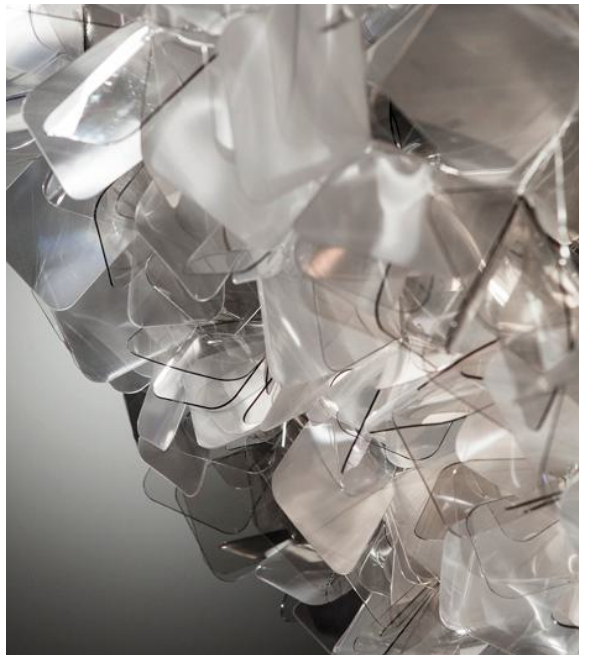
Ceiling or wall lamp consisting of colored interlocked squares in Cristalflex®, manually assembled to create a perfect balance of transparencies and reflections. All of the available versions marry aesthetics with functionality, featuring a magnetic anchoring system, that allows for easy installation and cleaning. Available in more finishes and also in suspension, floor and table versions. Made in Italy.

Finishes and materials

Diffuser: Cristalflex®



(For more specifications, please refer to “Finishes & Materials”)



Clizia

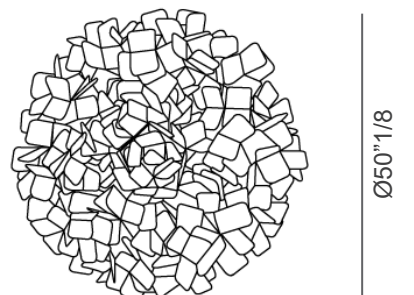
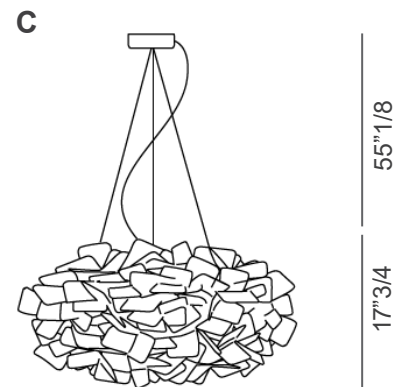
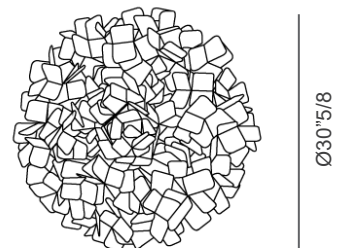
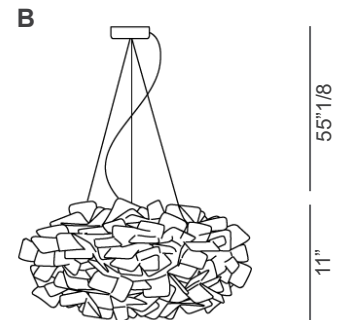
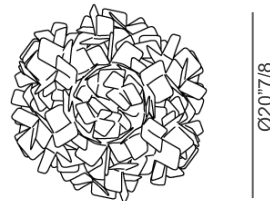
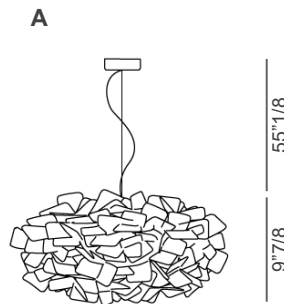
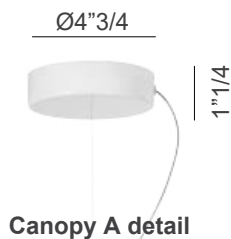
Dimensions

A: Ø20"7/8 x 9"7/8H

B: Ø30"5/8 x 11"H

C: Ø50"5/8 x 17"3/4H

Cables & canopy height: 55"1/8



NOTE: 19ft (aprox.) cable kit must be ordered with lamp purchase. Multiple installation kit on request.

(For more specifications, please refer to "Finishes & Materials")