

De-Symetria

Design: Luca Scacchetti



Description

The elegant De-Symetria conference table with shape and mass covered in wood and leather to contrast with the lightness of the trays and transparent tops.

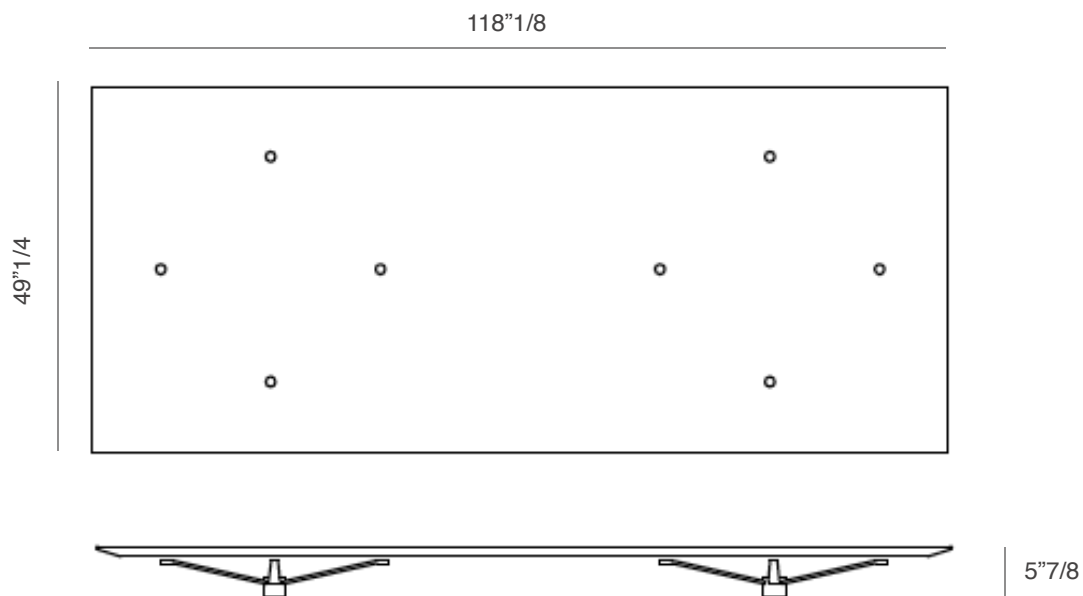
The transparency of these steel “open hands” becomes the characteristic of the collection.

The metallic parts are available in chromed steel only. Made in Italy.

Dimensions:

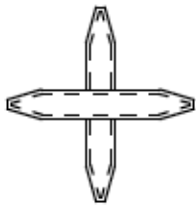
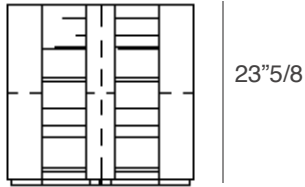
118"1/8W x 49"1/4D x 29"1/2H

Extraclear glass top.



De-Symetria

33"1/2 x 33"1/2



Leg for top in wood and leather edges.

Finishes and materials

Top: Extraclear glass.

Legs: Wood and leather.