

De-symetria

Design: Luca Scacchetti



Description

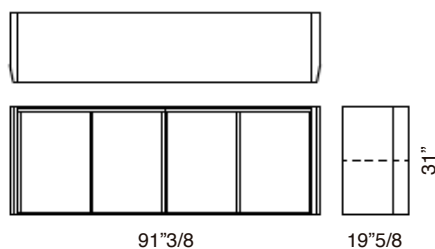
The luxury De-Symetria sideboard comes with the frame made in black melamine coated panels with thickness between 3/8" and 3/4".

The side panels are fixed to frames and have a thickness of 2"3/8; they can be covered completely in saddle leather or leather, otherwise they have the upper and lateral beveled edges covered in saddle leather or leather and a veneered panel applied on the central portion.

The top is made of a panel 3/4" thickness and is covered in saddle leather, leather or veneered. The drawers and file drawers are available covered in saddle leather, leather or veneered. The upper and lower doors are made with panels covered in saddle leather, leather, veneered or with a sheet of varnished glass 1/8" thickness.

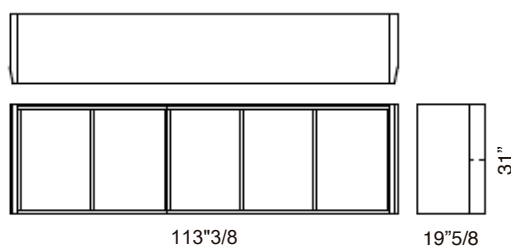
The handles are in polished aluminum. Made in Italy.

Dimensions:



DESYM1341CC:

Frame for 4 units low cabinet in leather or wood and edges in leather.



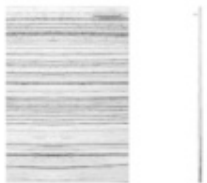
DESYM1343CC:

Frame for 5 units low cabinet in leather or wood and edges in leather.

Drawers and doors:



4 drawers in leather for the external side of the sideboard.



Right or left door in wood for the external side of the sideboard.



Right or left door covered in saddle leather or in soft leather for the external side of the sideboard.



Finishes and materials

Drawers & doors: Leather or wood.