

Big In&out

Design: Ernesto Lechter



Description

Table and chairs set. Chairs with frame in solid okumé wood and Dryfeel foam. Also available in the bi-fabric version in a choice of colors. Table with structure in aluminum and top in HPL or Bush-hammered Ceramic. Made in Italy.



Big In&out

Dimensions

Big In&out = Big low table + 8 In&out chairs
 Ø63"W x 25"5/8H

Elements:

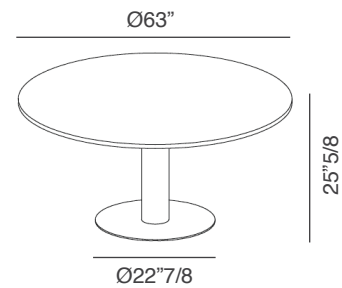
Big low table) Ø63"W x 25"5/8H

Base: Ø22"7/8

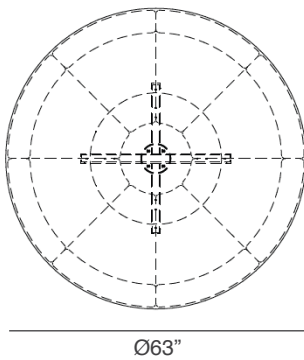
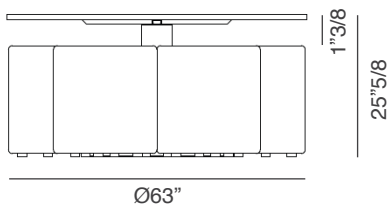
Single chair) 23"5/8W x 24"D x 24"H

Seat height: 15"3/4

Big low Table

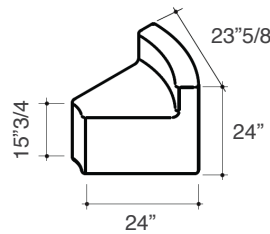


Big In&out

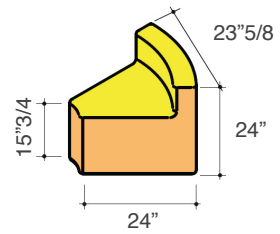


Single In&out Chair

Single fabric



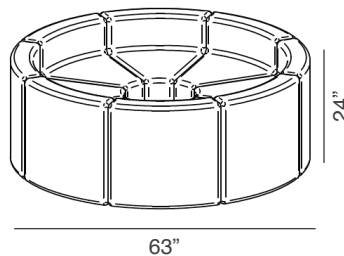
Fabric combination (bi-fabric)



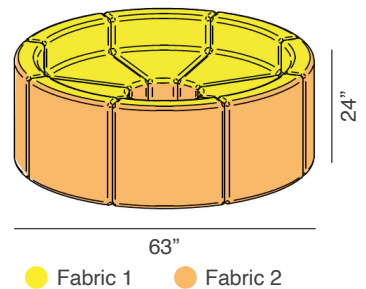
● Fabric 1 ● Fabric 2

Set of 8 In&out Chairs

Single fabric



Fabric combination (bi-fabric)



● Fabric 1 ● Fabric 2

(For more specifications, please refer to "Finishes & Materials")