

Kefa

Design: Matteo Nunziati



Description

The Kefa series is inspired by the work of the Italian architect Giuseppe Terragni, the father of Italian Rationalism and active between the 30's and 40's of the twentieth century. Terragni called his architecture "clear, elementary and perfect". Kefa is characterized by immense suspended volumes that intersect each other. The lines are basic but thanks to the important dimension, the imposing forms, the attention for the details and the careful selection of the materials such as Soft leather, wood and metal, each complement acquires a richness and a unique exclusivity. The result is a Contemporary and innovative style, at the same time elegant and bourgeois.

The Kefa model is available in many different versions and finishes.

* For more specifications, please refer to the "Finishes & Materials" PDF

Kefa

The structure is made of honeycomb fiberboard with edges and crossbars in beechwood, honeycomb cardboard with thickness 1"5/8 and two panels each one 3/8" on the 2 faces.

Tops in wood with a Soft leather inlay. The drawer unit has the top and the drawer fronts in matching wood, and it also has the sides and an external door covered in matching Soft leather.

Tops of the desks are equipped with a plug box with 2x universal power sockets, 2x USB, 1x Audio 3.5, 1x HDMI, 2x RJ45 with top covered in matching Soft leather.

The leg is fixed to the top with cylindrical wood dowels and with eccentric screws. Under the top, between the two bases, is fixed with a cross with thickness 1"3/8 in order to give solidity to the desk.

One of the bases is a fixed leg and the other one is a fixed pedestal with a drawer unit and a side door. The handles of the drawers are made with Titanium color varnished aluminum profile. The drawers are in beech plywood panel black matt lacquered with steel slide runners with damped close.

Made in Italy.



Finishes & Materials

Desk Top & Leg: Wood with Soft leather insert.

Fixed Pedestal Top & Drawer fronts: Matching wood as Desk.

Fixed Pedestal Sides: Matching Soft Leather.

Handle profiles: Aluminum varnished in Titanium color.

Kefa

Dimensions

- A)** 86"5/8W x 39"3/8D x 29"H **C)** 94"1/2W x 47"1/4D x 29"H
B) 94"1/2W x 39"3/8D x 29"H **D)** 102"3/8W x 47"1/4D x 29"H
 Dimensions + Protruding part of the Pedestal (Drawer Unit)

Pedestal:

- For A&B: 31"1/2W x 42"3/8D x 26"3/4H
 For C&D: 31"1/2W x 50"1/8D x 26"3/4H

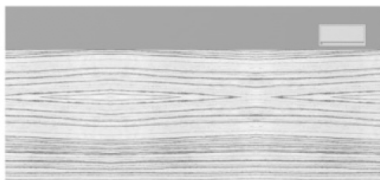
Any of the tops include:

A plug box with 2x universal power sockets, 2x USB, 1x Audio 3.5, 1x HDMI, 2x RJ45 with top of the box covered in matching Soft leather.

Top

A & B

39"3/8

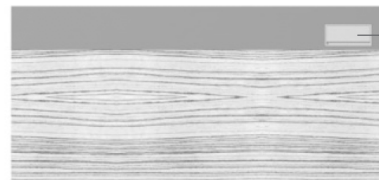


86"5/8 - 94"1/2

Top in Eucalyptus, Black walnut or Titanium Oak, with Soft leather stripe.

C & D

47"1/4



94"1/2 - 102"3/8

Top in Eucalyptus, Black walnut or Titanium Oak, with Soft leather stripe.

Leg

26"3/4



39"3/8 2"1/4

Leg in Eucalyptus, Black walnut or Titanium Oak, with Soft leather stripe.

26"3/4



47"1/4 2"1/4

Leg in Eucalyptus, Black walnut or Titanium Oak, with Soft leather stripe.

Pedestal (Frame)

26"3/4



31"1/2

42"3/8

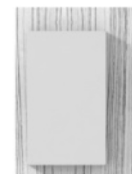


26"3/4



31"1/2

50"1/8

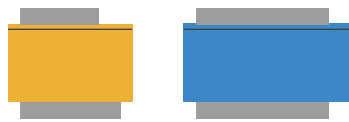
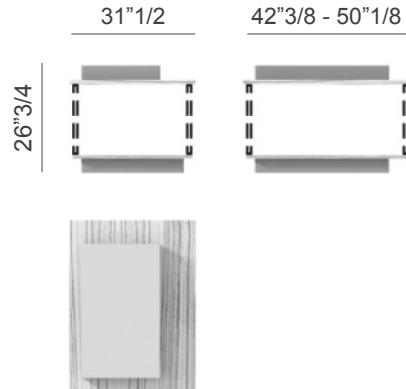


The pedestal (drawers unit) can be placed to the Left or Right side of the desk


Kefa


Configuration of the Pedestal:

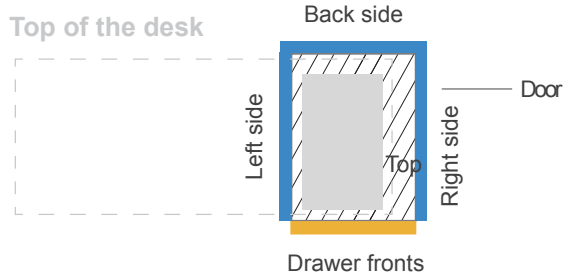
Pedestal
(Frame)



 Top of the Pedestal/Drawer Unit in Wood.

 Left (panel), Right (panel and door) and Back (panel) Side in Soft Leather.

 Drawer fronts in Wood matching the top.



The reference diagram above is just for explanational purposes

Wood

3 drawers



1 drawer and 1 file

