

Argo Wood

Design: Ludovica + Roberto Palomba



Description

Sofa with tubular aluminum structure covered with a weave of double braided synthetic fabric ropes available in dark grey, snowy or blue color. Accoya wood legs in rosewood or natural teak color. The seat is supported by synthetic elastic belts specific for outdoor use. Seat and backrest cushions are padded with quick dry foam. Removable covers in easy to wash, weather resistant fabrics, available in beige, dark grey, plain white or ocean blue color. Decorative cushions available on demand. Made in Italy.

Finishes & Materials

Legs: Accoya wood in rosewood (L11) or natural teak (L2) color.

Weaving: Double braided synthetic fabric ropes in dark grey (R8), snowy (R26) or blue (R27) color.

Covers: Fabric in beige (C123), dark grey (C124), plain white (C130) or ocean blue (C131) color.

Decorative cushions' cover: Plain grey (C99), plain ochre (C118), plain beige (C121), white-beige (C123), dark grey (C124), outmap blue (C128), plain white (C130) or ocean blue (C131) color.

* For more specifications, please refer to the "Finishes & Materials" PDF

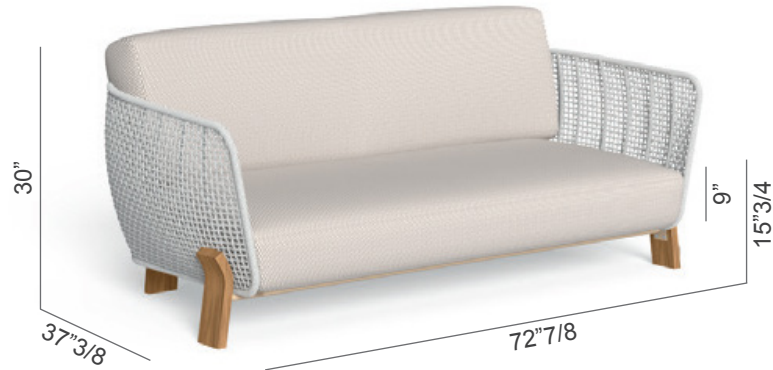
Argo Wood

Dimensions

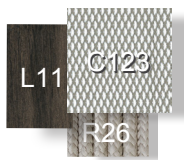
72"7/8W x 37"3/8D x 30"H

Seat height: 15"

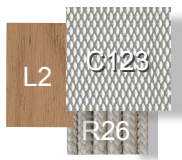
Seat cushion height: 9"



Available color combinations:



ROSEWOOD LEGS +
SNOWY WEAVING +
BEIGE CUSHIONS



NATURAL TEAK
LEGS + SNOWY
WEAVING +
BEIGE CUSHIONS



NATURAL TEAK
LEGS + DARK GREY
WEAVING + MAMBO
PEARL CUSHIONS



NATURAL TEAK
LEGS + SNOWY
WEAVING + PLAIN
WHITE CUSHIONS



NATURAL TEAK
LEGS + BLUE
WEAVING + OCEAN
BLUE CUSHIONS



NATURAL TEAK
LEGS + SNOWY
WEAVING +
REGGAE IVORY
CUSHIONS



Decorative cushions:

23"5/8 x 15"3/4

17"3/4 x 17"3/4

17"3/4 x 9"7/8

* For more specifications, please refer to the "Finishes & Materials" PDF