

## Leaf

*Design: Marco Acerbis*



### *Description*

Dining table with powder-coated aluminum base, available in white, graphite and mokka color. Rectangular top in Vitter, a compact laminate formaldehyde-free characterized by a durable surface, with the unique feature of being full color, inside and outside. Main features: it is completely waterproof, it is flame-retardant and self-extinguishing (class B-s2, d0), it has a very high resistance to impacts and scratches, it is resistant to the use of aggressive chemical detergents, it is suitable for direct contact with food, it does not retain odors or flavors and it is antibacterial, meeting the most stringent hygiene requirements. Available in light metal, dark grey and corten color. This table accommodates up to 12 people. Made in Italy.

### *Finishes & Materials*

**Base:** White (A12), graphite (A14) or mokka (A15) powder-coated aluminum.

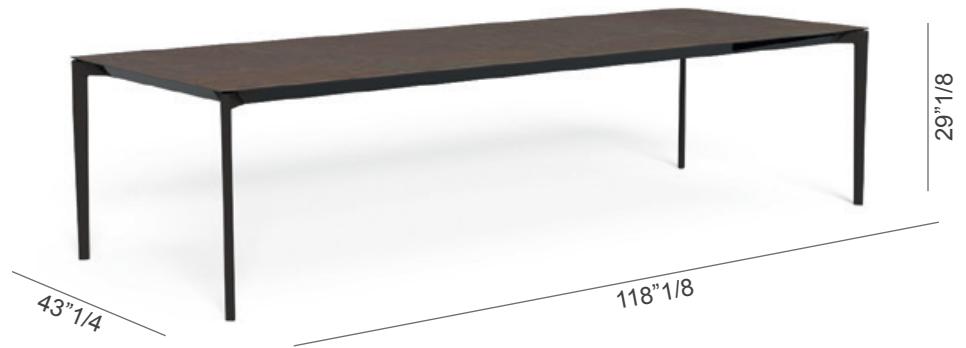
**Top:** Vitter in light metal (S22), dark grey (S23) or corten (S24) color.

*\*Also available in Natural Teak wood (L2)*

## Leaf

### Dimensions

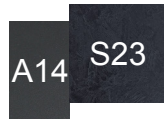
118"1/8W x 43"1/4D x 29"1/8H



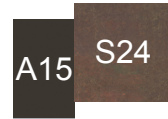
### Available combinations:



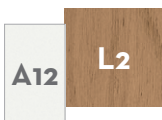
WHITE ALUMINUM  
BASE + LIGHT METAL  
VITTER TOP



GRAPHITE ALUMINUM  
BASE + DARK GREY  
VITTER TOP



MOKKA ALUMINUM  
BASE + CORTEN  
VITTER TOP



WHITE ALUMINUM  
BASE + NATURAL  
TEAK TOP



GRAPHITE  
ALUMINUM BASE +  
NATURAL TEAK  
TOP



MOKKA ALUMINUM  
BASE + NATURAL  
TEAK TOP