

Leaf

Design: Marco Acerbis



Description

Dining table with powder-coated aluminum base, available in white, graphite and mokka color. Square top in Vitter, a compact laminate formaldehyde-free characterized by a durable surface, with the unique feature of being full color, inside and outside. Main features: it is completely waterproof, it is flame-retardant and self-extinguishing (class B-s2, d0), it has a very high resistance to impacts and scratches, it is resistant to the use of aggressive chemical detergents, it is suitable for direct contact with food, it does not retain odors or flavors and it is antibacterial, meeting the most stringent hygiene requirements. Available in light metal, dark grey and corten color. This table accommodates up to 8 people. Made in Italy.

Finishes & Materials

Base: White (A12), graphite (A14) or mokka (A15) powder-coated aluminum.

Top: Vitter in light metal (S22), dark grey (S23) or corten (S24) color.

**Also available in Natural Teak wood (L2)*

Leaf

Dimensions

59"W x 59"D x 29"1/8H



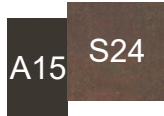
Available combinations:



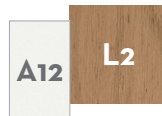
WHITE ALUMINUM
BASE + LIGHT METAL
VITTER TOP



GRAPHITE ALUMINUM
BASE + DARK GREY
VITTER TOP



MOKKA ALUMINUM
BASE + CORTEN
VITTER TOP



WHITE ALUMINUM
BASE + NATURAL
TEAK TOP



GRAPHITE
ALUMINUM BASE +
NATURAL TEAK
TOP



MOKKA ALUMINUM
BASE + NATURAL
TEAK TOP

* For more specifications, please refer to the "Finishes & Materials" PDF