

Malè

Design: Ludovica + Roberto Palomba



Description

Low coffee table with square top in sand limestone or grey moon stoneware, supported by a base in white, dove or graphite polyethylene. Made in Italy.

Finishes & Materials

Base: White (PE1), dove (PE2) graphite (PE3) red (PE4) or blue (PE5) polyethylene.

Top: Sand limestone (S20) or grey moon stoneware (S21).



* For more specifications, please refer to the "Finishes & Materials" PDF

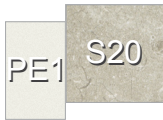
Malè

Dimensions

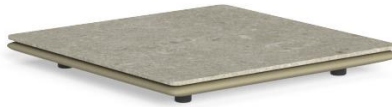
35"3/8W x 35"3/8D x 4"H



Available combinations:



WHITE POLYETHYLENE BASE +
SAND LIMESTONE TOP



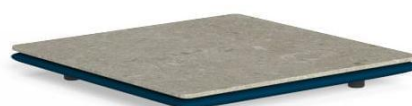
DOVE POLYETHYLENE BASE +
SAND LIMESTONE TOP



GRAPHITE POLYETHYLENE BASE +
GREY MOON STONEWARE TOP



RED POLYETHYLENE BASE +
SAND LIMESTONE TOP



BLUE POLYETHYLENE BASE +
SAND LIMESTONE TOP

* For more specifications, please refer to the "Finishes & Materials" PDF