

Asia High



Description

Bookcase with metal structure and adjustable height, so it can be fixed to the ceiling. Composed of three uprights in bronze or chrome finish and four shelves covered in leather. The back features a few panels in the same finish as the structure. A version that includes two mono-sided boxes covered in leather is also available. Larger versions can be created by placing various modules consecutively. Made in Italy.

Finishes & Materials

Structure: Metal in bronzed brass or chrome finish or leather cat. B/C/D.

Shelves & boxes: C.O.L. or leather cat. B/C/D.

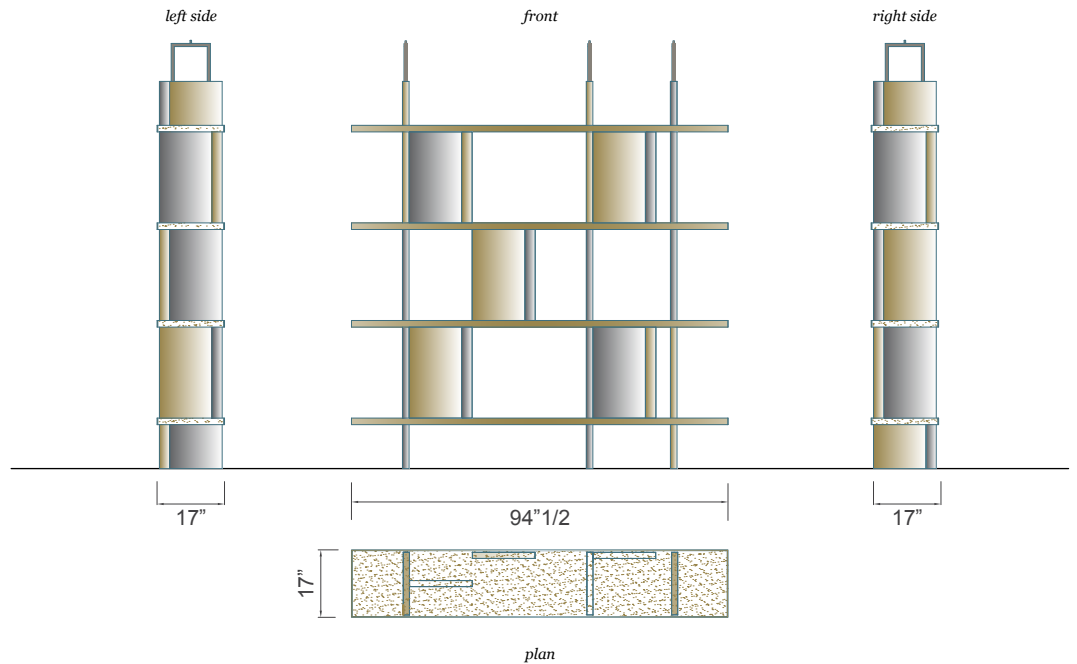


* For more specifications, please refer to the "Finishes & Materials" PDF

Asia High

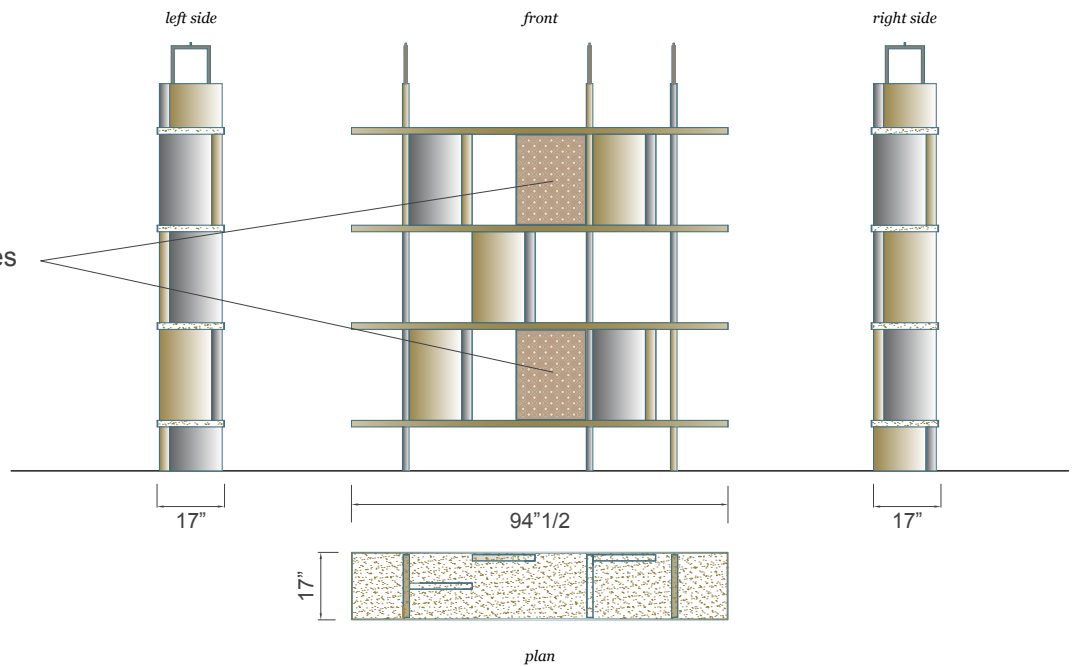
Dimensions

94"1/2W x 17"D x 96"7/8H
 Maximum H: 108"1/4



Includes two mono-sided boxes

NOTE: Embroideries are available only for boxes in smooth leathers cat. C/D.



* For more specifications, please refer to the "Finishes & Materials" PDF