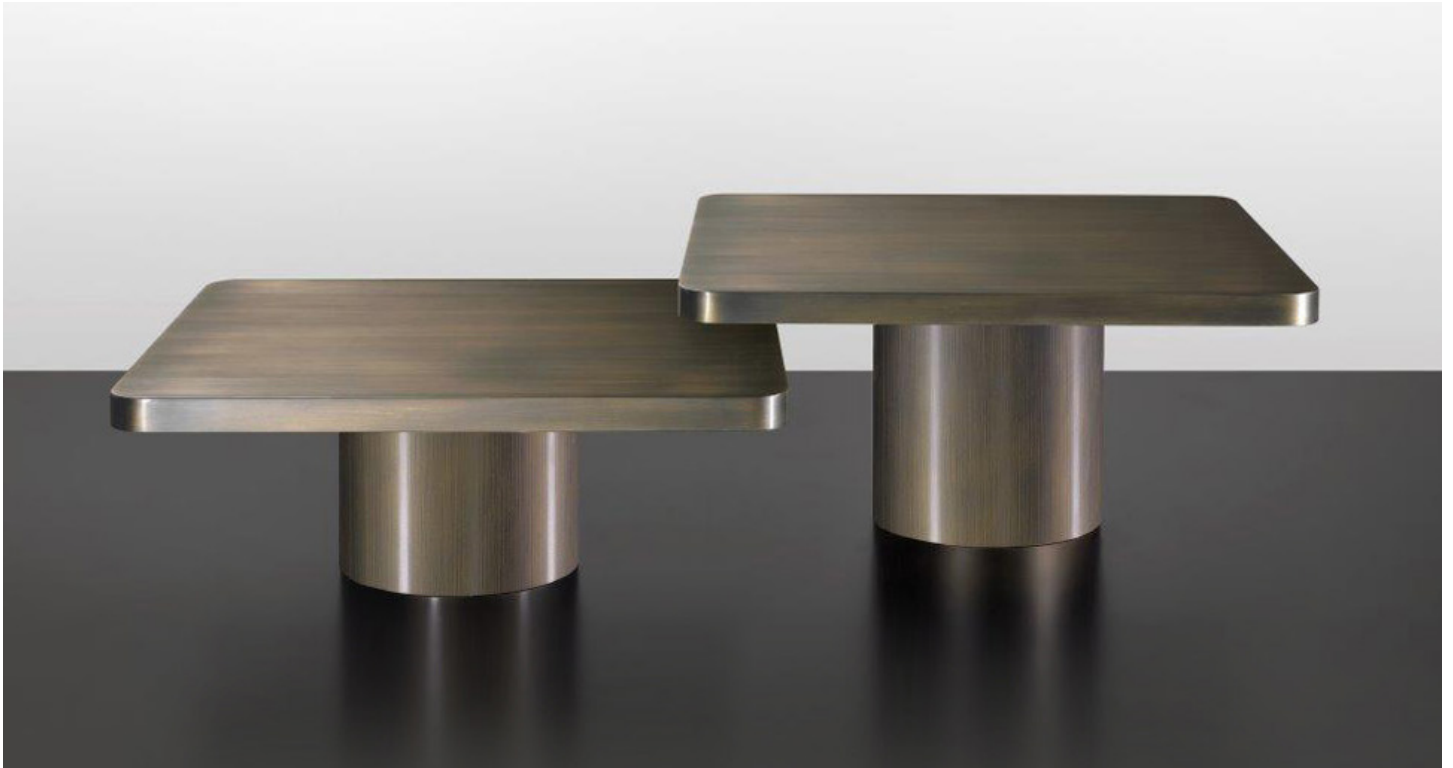


# Tau Steel

*Design: Riccardo Lucatello*



## *Description*

Coffee and side tables with base and top in wood, shiny satin dark brass finish. Top available in round or square with rounded corners versions. Made in Italy.



## Tau Steel

### Dimensions

#### Round top

- A:  $\text{Ø}23\frac{5}{8}$  x  $18\frac{1}{2}$ H
- B:  $\text{Ø}23\frac{5}{8}$  x  $21\frac{5}{8}$ H
- C:  $\text{Ø}31\frac{1}{2}$  x  $12\frac{5}{8}$ H
- D:  $\text{Ø}31\frac{1}{2}$  x  $18\frac{1}{2}$ H
- E:  $\text{Ø}47\frac{1}{4}$  x  $15\frac{3}{8}$ H

#### Square top with rounded corners

- F:  $23\frac{5}{8}$ W x  $23\frac{5}{8}$ D x  $18\frac{1}{2}$ H
- G:  $23\frac{5}{8}$ W x  $23\frac{5}{8}$ D x  $21\frac{5}{8}$ H
- H:  $31\frac{1}{2}$ W x  $31\frac{1}{2}$ D x  $12\frac{5}{8}$ H
- I:  $31\frac{1}{2}$ W x  $31\frac{1}{2}$ D x  $18\frac{1}{2}$ H
- J:  $47\frac{1}{4}$ W x  $47\frac{1}{4}$ D x  $15\frac{3}{8}$ H

