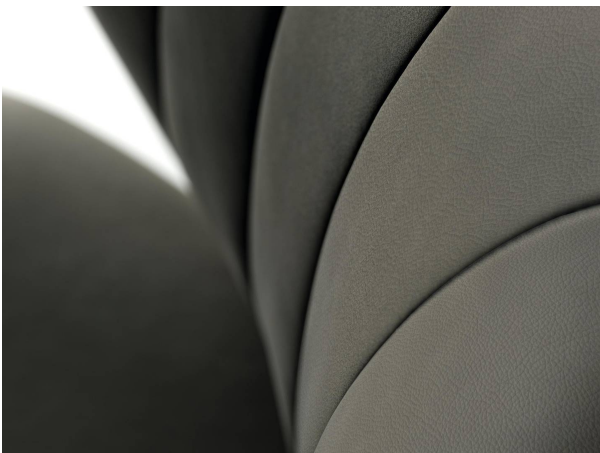


## Ruffle

*Design: Mauro Lipparini*



### *Description*

Decorative quilting with tailored details defines Ruffle's elegant rhythm, a modern chair with a light, versatile design.

Slender legs with real personality emphasize the sublime elegance of this chair design, with invisible joins for the seat and backrest.

Ruffle is defined by its quilted finish with neat tailored details, emphasizing the quality of the upholstery work.

The result is a high-end, contemporary chair.

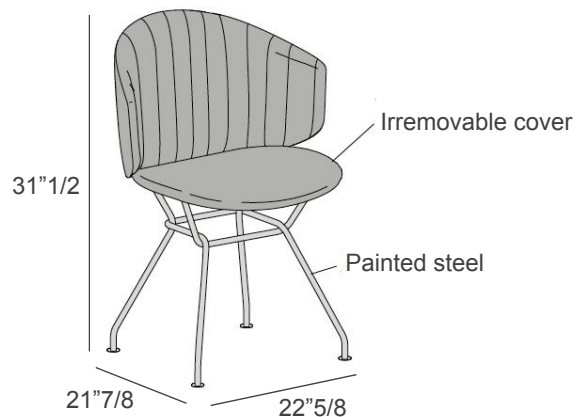
The frame accentuates the Ruffle chair's slender design, lightening the look of the whole space.

Non-stackable. Irremovable fabric cover.

Made in Italy.

### *Dimensions*

22"5/8W x 21"7/8D x 31"1/2H



### *Finishes & Materials*

**Cover:** Fabric (Cat. B or C), leather or eco-leather.

**Frame:** Painted steel.