

Materia

Design: Daniele Lago



Description

Suspended wall-mounted storage solution that combines refined finishes, giving unique material sensations. The Materia sideboard has a pure, linear design marked out by 1/8" of glass: extremely resistant, it creates a crisp surface finish that brings the unit to life.

Choose from XGlass marble, metal, wood or fabric finishes, which have a continuous grain or pattern to bring out the original natural properties of these materials. Glass is LAGO's signature material, offering noble qualities, ultra-resistant properties and pure forms. It reflects the light in a stunning visual display guaranteed to blow you away.

The practical and functional push-to-pull opening with a slight pressure of the hand allows the elegant and essential design of the monolith to be maintained, without any cumbersome handles.

LED lighting on the glass shelves inside the unit that creates beautiful, user-friendly spaces, adding to the look of a product that leaves no stone unturned.

Made in Italy.

Finishes & Materials

Top, Structure & Fronts: Polished and Matt Glass or XGlass.

Inside Structure: Melamine.

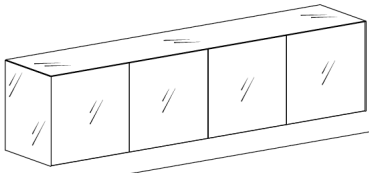
Inside Shelves: Tempered Glass.

Materia

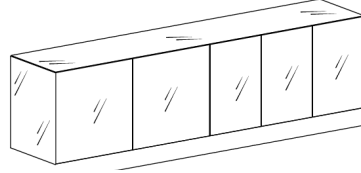
Dimensions

- A) 43"3/4W x 16"D x 21"7/8H
- B) 65"1/2W x 16"D x 21"7/8H
- C) 87"1/4W x 16"D x 21"7/8H
- D) 43"3/4W x 20"D x 21"7/8H
- E) 65"1/2W x 20"D x 21"7/8H

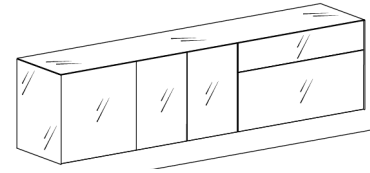
- F) 87"1/4W x 20"D x 21"7/8H
- G) 58"1/4W x 16"D x 21"7/8H
- H) 72"3/4W x 16"D x 21"7/8H
- I) 58"1/4W x 20"D x 21"7/8H
- J) 72"3/4W x 20"D x 21"7/8H



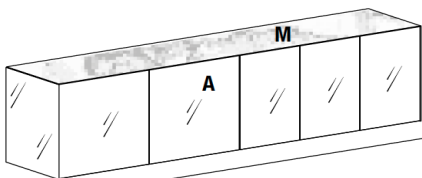
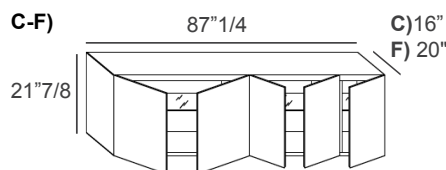
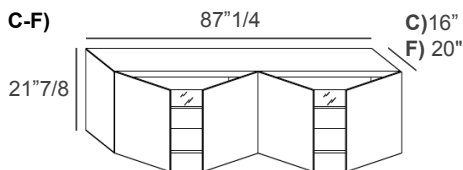
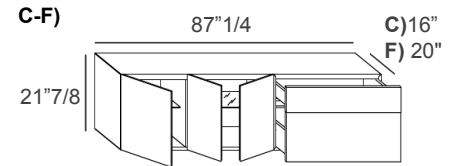
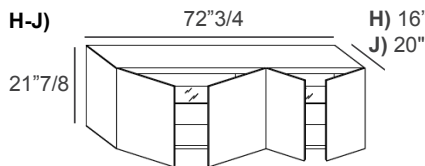
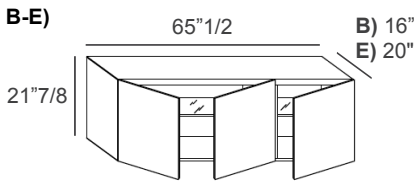
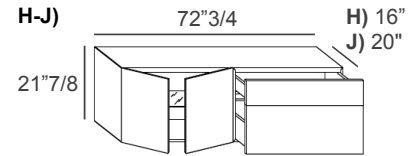
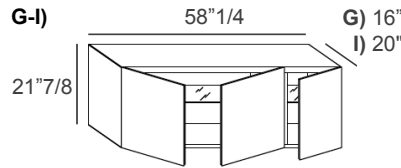
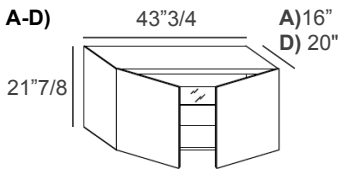
Version 1



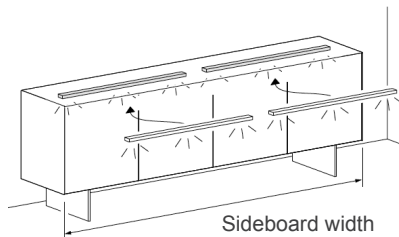
Version 2



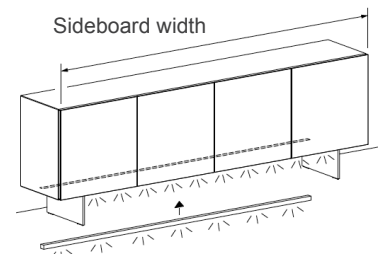
Version 3



Version 2 with XGlass Top (M)
-Fronts in Polished/Matt Glass.



Internal LED lighting
3000°K - Control with sensor.
Transformer included.



Optional LED lighting under base
Horizontal sideboard-width strip.
3000°K - Clip fastening.
Control with wall switch.
With or without power unit
(80 W - 110V - At least one light required)
-Not set up for cables to pass through).