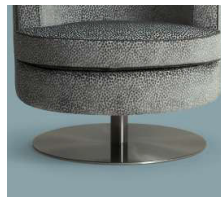


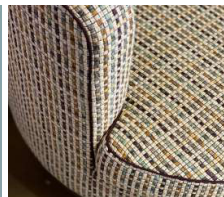
Frisbee



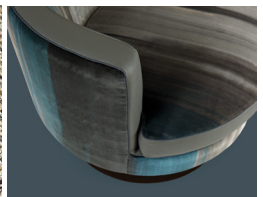
DETAILS



Swivel metal base



Piping



Fabric or leather detail

Description

Lounge chair with a minimalistic circular design, supported by a metal base in various finishes, that doesn't lack in glamour.

Available in different versions:

- . Mono-cover: upholstered in fabric or leather.
- . Mono-cover with detail: upholstered in fabric with detail in leather or upholstered in leather with detail in fabric.
- . Bi-cover: upholstered in same category and different color or upholstered in leather and seat cushion upholstered in fabric.

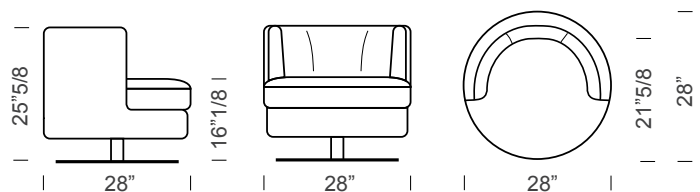
It also matches perfectly with the other pieces from the family: frisbee lounge chair and frisbee ottoman. Perfect for contract projects.

Made in Italy.

Dimensions

28"W x 28"D x 25"5/8H

Seat height: 16"1/8



Technical information:

- . Structure: Solid wood.
- . Seat springing: Criss-crossed elastic straps.
- . Fillings: Seat cushion in 30kg/m3 density polyurethane foam, covered with polyester fiber.
- . Swivel base: Metal.