

Barone

Design: Pocci & Dondoli



Description

A harmonious twist of sinuous arches outlines a unique base, resembling an artful twist of blades that serve as an opulent support for this masterpiece of elegance.

The intricate base design not only captures attention but also brings a sculptural element to the space. Its identity is suitable for any room, due to the wide range of tops it can be matched with. Offered in both round and elliptical shapes, this table provides options to complement various dining or living areas. This high-end table elevates the ambiance, blending artistic form with functional design. Size "E" features a Lazy Susan. Made in Italy.

Finishes & Materials

Top: Transparent Glass, Glossy Lacquered Glass, SuperCeramic, Matt or Glossy SuperMarble, Matt Velvet Anti-Scratch Lacquered Glass and Veneer.

Lazy Susan: Transparent Glas, Glossy Lacquered Glass, Matt or Glossy SuperMarble and Matt Velvet Anti-Scratch Lacquered Glass.

Frame: Lacquered Metal.

Barone

Dimensions

Round:

- A) $\text{Ø}43\frac{1}{4}$ x $29\frac{1}{2}$ H - Cod. 01.79
- B) $\text{Ø}47\frac{1}{4}$ x $29\frac{1}{2}$ H - Cod. 01.90
- C) $\text{Ø}51\frac{1}{8}$ x $29\frac{1}{2}$ H - Cod. 01.58
- D) $\text{Ø}59$ x $29\frac{1}{2}$ H - Cod. 01.91
- E) $\text{Ø}59$ x 30 "H - Cod. 20.74

Elliptical:

- F) $70\frac{7}{8}$ W x $45\frac{1}{4}$ D x $29\frac{1}{2}$ H - Cod. 01.59

Round without Lazy Susan



Round with opaque Lazy Susan



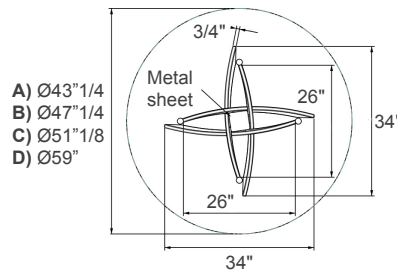
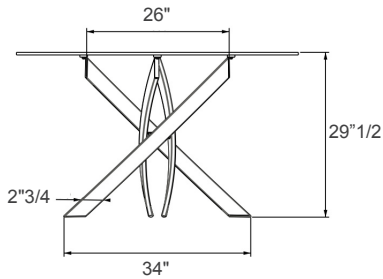
Round with transparent Lazy Susan



Elliptical

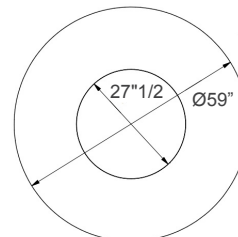
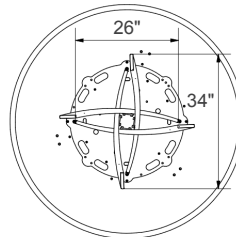
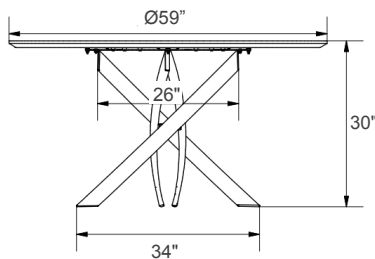


A - B - C - D)

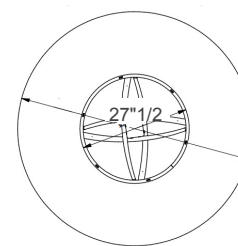
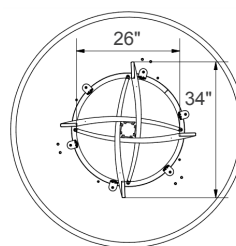
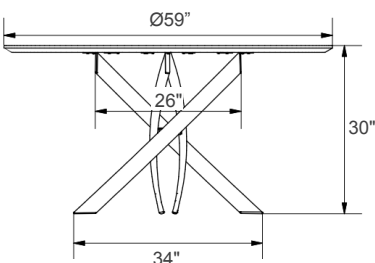


- A) $\text{Ø}43\frac{1}{4}$
- B) $\text{Ø}47\frac{1}{4}$
- C) $\text{Ø}51\frac{1}{8}$
- D) $\text{Ø}59$

E)



E)



F)

