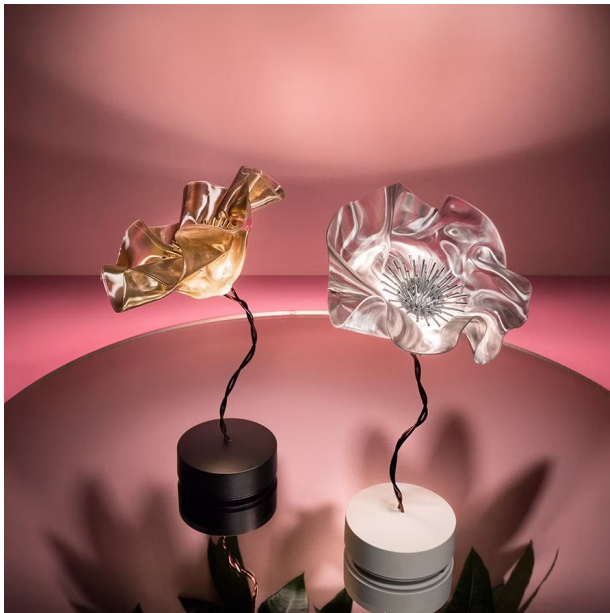


## LaFleur

*Design: Marc Sadler*



### Description

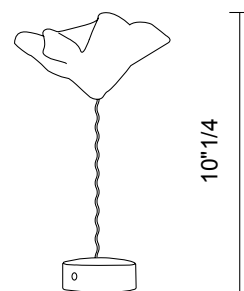
The delicate, battery-powered LaFleur is a hand-molded bloom, slowly sculpted using temperature-controlled Lentiflex. Both the prisma and velvet versions have a matte magnetic base, in white or black, accompanied by a metal disc that firmly anchors the lamp under textiles for the perfect tablescape. Made in Italy.

#### Technical info:

- . **Light source:** 1 X 1,3W Battery LED  
150 Lumen - 3000 Kelvin.
- . **Dimmable:** with integrated dimmer.
- . **Materials:** Lentiflex®, copper wire.
- . **Battery life:** at max intensity around 6.5 hours duration, at min intensity around 60 hours duration.

### Dimensions

5"7/8W x 3"3/8D x 15"H



Prisma Diffuser



Velvet Diffuser

