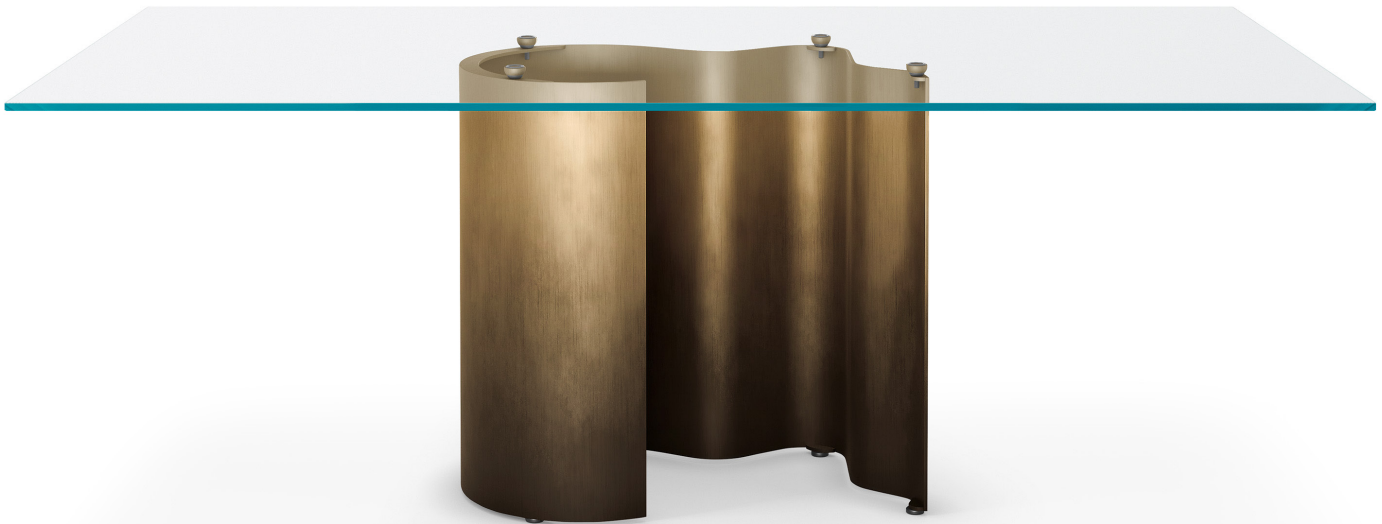


Papelito Glass

Design: Margherita Fanti



Description

Table with base in titanium (GFM11) or bronze (GFM18) embossed lacquered steel, Oxybrass or Oxygrey lacquered steel. Top in 5/8" clear or extra clear glass. Glass top 1/2" on A, B and D sizes. The top is laid on the base.

The Papelito family of tables was conceived as a table-sculpture that puts on a glamorous show, bringing the ultimate modern dining room to life. Its sinuous base has been cleverly designed to change in appearance depending on the position from which it is viewed. Full and empty cylinders swap places with the changing light and shadow when viewing this designer table from different angles. Made in Italy.

Papelito Glass

Dimensions

Rectangular A: 63"W x 35"3/8D x 29"1/8H

Rectangular B: 71"5/8W x 35"3/8D x 29"1/8H

Rectangular C: 78"3/4W x 39"3/8D x 29"1/8H

Rectangular D: 78"3/4W x 41"3/4D x 29"1/8H

Shaped E: 78"3/4W x 47"1/4D x 29"1/8H

