

Bamboo Evo

Design: Tulczinsky



Description

Modular suspension lamp with rods in ribbed transparent glass. Metal joints in satin dark brass finish. Metal ceiling support in matt black finish. LED lighting. Made in Italy.

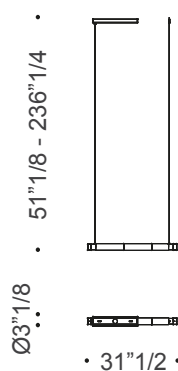
Dimensions

A: 31"1/2W x Ø3"1/8

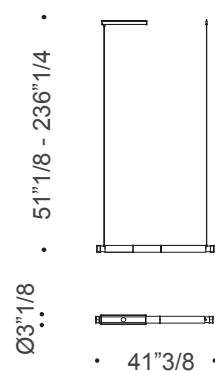
B: 41"3/8W x Ø3"1/8

(51"1/8 - 236"1/4H with cables)

A Module 80



B Module 105



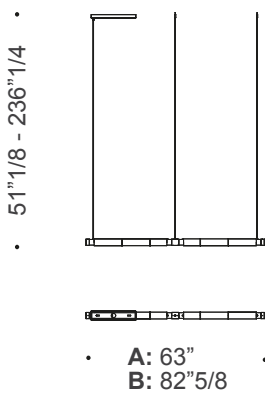
Bamboo Evo

Suggested compositions

For all compositions: 51"1/8 - 236"1/4H with cables

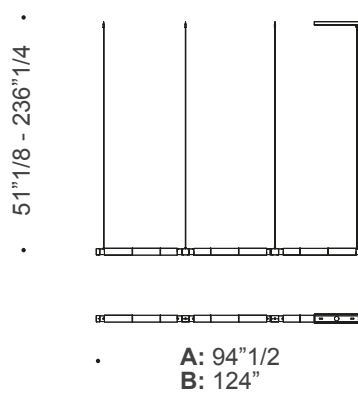
Composition 1

A: 63"W (2 modules 80 + 1 joint A)
B: 82"5/8W (2 modules 105 + 1 joint A)

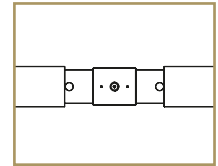


Composition 2

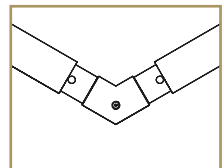
A: 94"1/2W (3 modules 80 + 2 joints A)
B: 124"W (3 modules 105 + 2 joints A)



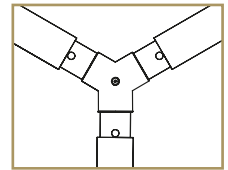
Joint A



Joint B

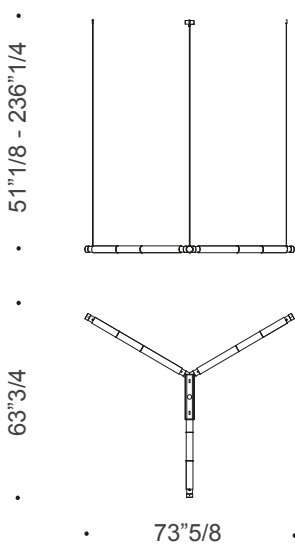


Joint C



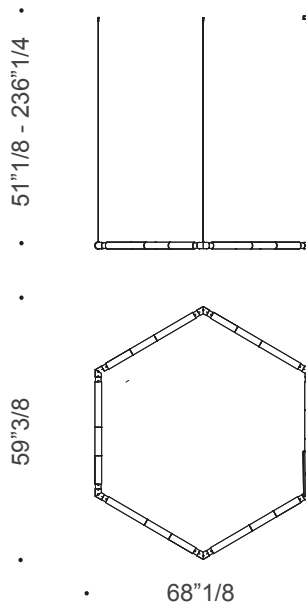
Composition 3

73"5/8W x 63"3/4D
(3 modules 105 + 1 joint C)



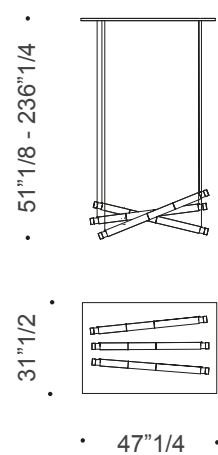
Composition 4

68"1/8W x 59"3/8D
(6 modules 80 + 6 joints B)



Composition 5*

47"1/4W x 31"1/2D
(3 modules 105)



*Rectangular ceiling support
in mirrored glass for smaller
compositions.