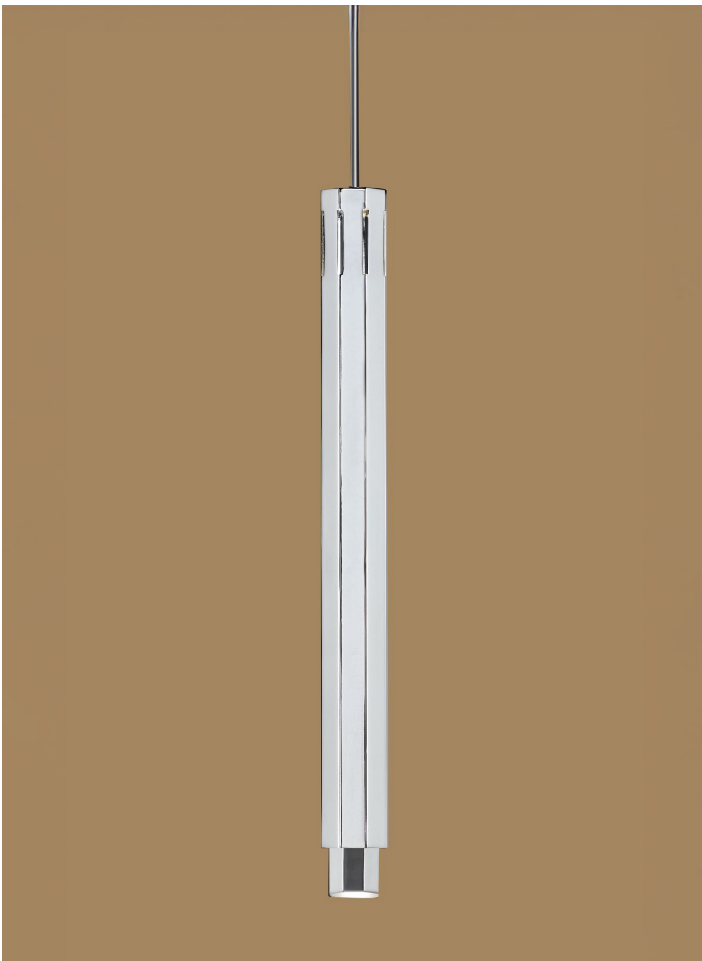


## Castel

*Design: Vincenzo Bafunno*



### Description

The alchemy of light unveils the essence of architecture and transforms it into design. Inspired by the timeless geometry of Castel del Monte, the collection offers a contemporary interpretation of Apulia's architectural heritage. Its octagonal form becomes a prism of reflection, capturing and refracting the shifting interplay of light and color within a space. Each face reveals a distinct character, crystallizing the ever-changing iridescence of its surroundings. Castel has a double LED light source: the direct light downwards and the atmosphere light upwards.

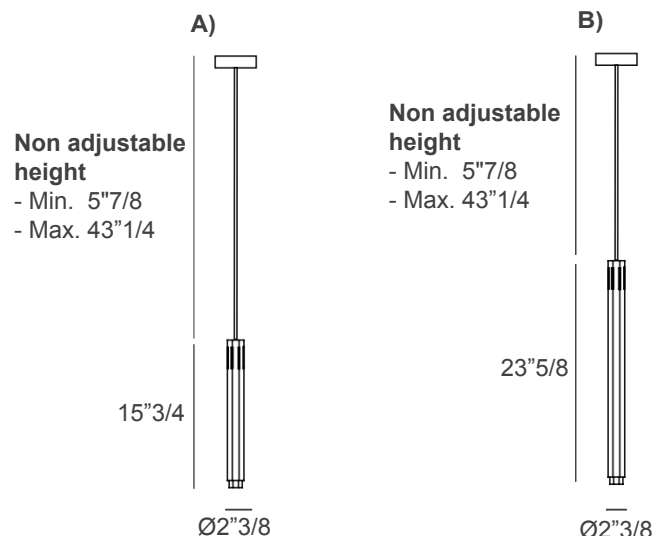
The length of the cable is defined by the client and it is non-adjustable. Made in Italy.

**Light source:** 2 Spot LED 6W - 4000°K - 12 Vdc - 560 lm - Dimmable

### Dimensions

A)  $\text{Ø}2\frac{3}{8}$  x  $15\frac{3}{4}$ H - CASTEL S1 Small

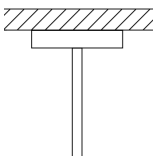
B)  $\text{Ø}2\frac{3}{8}$  x  $23\frac{5}{8}$ H - CASTEL S1 Big



### Finishes & Materials

**Structure:** Handcrafted metal.

#### Hook with fixed height (G)



Non adjustable height. Client needs to choose from the available measures.

- Min. length 5"7/8
- Max. length 43"1/4