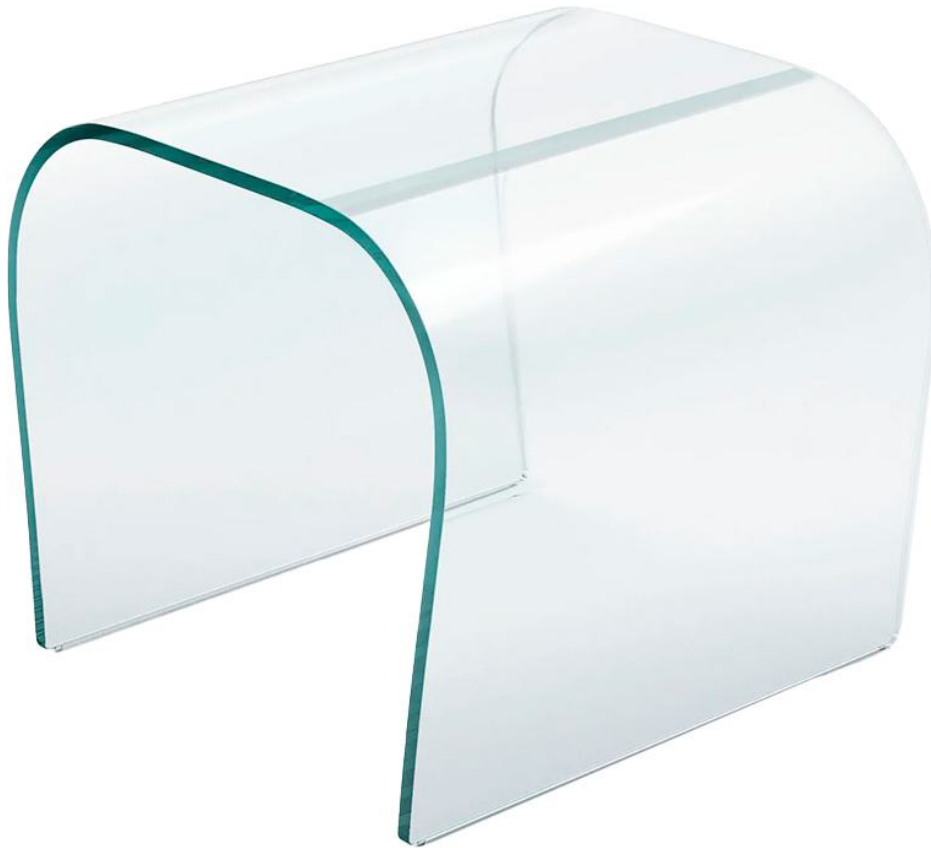


# Bent

*Design: Naoto Fukasawa*



## *Description*

The Bent ottoman is a refined expression of natural simplicity, crafted from a single sheet of 15 mm thick transparent extralight glass that has been expertly shaped and curved. Its fluid form highlights the clarity and purity of the material while showcasing the technical precision behind its creation.

## *Finishes & Materials*

**Structure:** Glass or mirror.

## Bent

---

### *Dimensions*

15"3/4W x 19"1/4D x 15"3/4H

