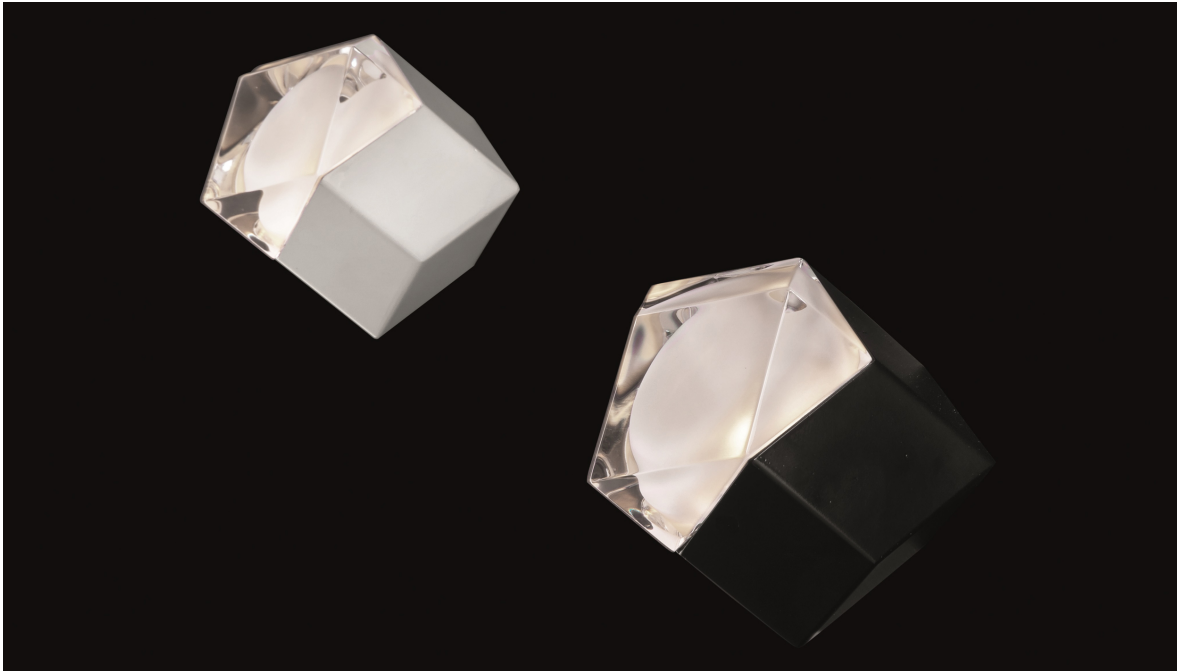


## Astro

*Design: Giopato & Coombes*



### *Description*

The designers chose the cube as the leitmotif of their project, exploring its isometric projection and evolving it into a solid rhombic dodecahedron composed of twelve equal rhombi. From a flat figure evoking volume, they created a three-dimensional object that appears almost like a plane: a fascinating play of perception that defines this designer lighting fixture. Astro's jewel-like presence comes from its contrasting surfaces: three transparent and sandblasted faces paired with opaque ones. These high-end materials, combined with its metal body and refined glass details, produce a prism-like effect that transforms light into geometry. Carefully engineered proportions ensure a perfect harmony between the lamp's physical form and the luminous patterns it casts, creating striking geometrical figures on the wall. Highly versatile, Astro can be oriented during installation to adapt to different environments and lighting needs. This exclusive piece is only available as a set of two lamps. Made in Italy.

### *Dimensions*

5"3/8W x 4"D x 5"1/2H - Cod. 1188

**Light source:** 1 x max 33W (G9) - Without bulb

### *Finishes & Materials*

**Diffuser:** Transparent sand-blasted pressed glass.

**Painted Base:** Cast aluminum.

