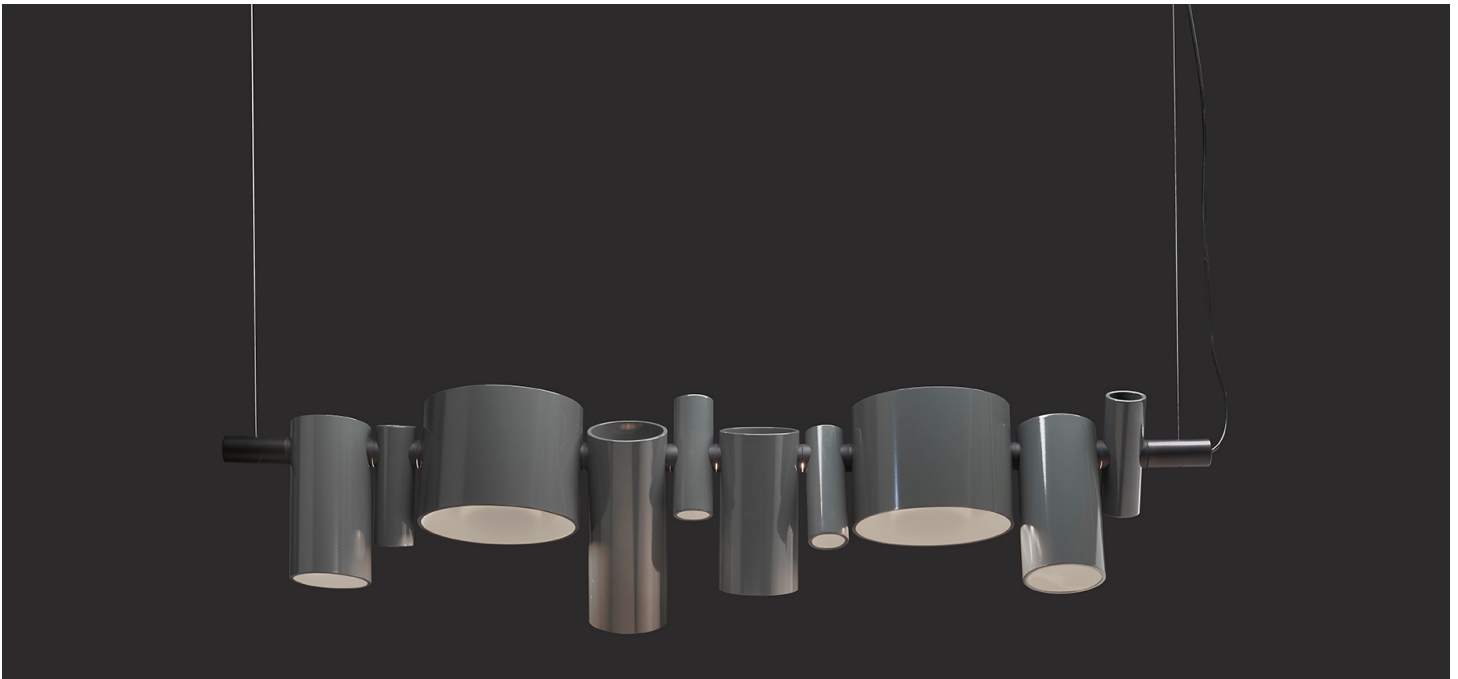


Dancing Queen

Design: Victor Vasilev



Description

Dancing Queen is a suspended luxury lighting fixture that is both decorative and technical, offering a flexible compositional structure that allows for multiple lighting layouts. At the heart of the design is a central horizontal body that houses the LED light source and supports ten slender metal cylinders of varying diameters, conceived as adjustable spotlights. Usually considered purely technical elements, these spotlights are reimagined as decorative features, thanks to their irregular proportions and dynamic arrangement along the support. Resembling a suspended sculpture, Dancing Queen creates captivating harmonies of light and space. It blends elegance and functionality with contemporary design, resulting in a versatile designer light fixture that adapts to different domestic scenarios while elevating interiors with its sculptural presence. Made in Italy.

Dimensions

49"1/4W + 13"H + 110"1/4 of Cables (Adjustable height) - Cod. 456

Light source: 1 x max 30W (LED) 2700°K - 3300 lm CRI>85
+ 1 x 25 W (LED) - 2700°K - 2750 lm - CRI>85 - With bulb

Finishes & Materials

Structure: Metal.

