

Slim

Design: R&D Dallagnese



Description

Slim is a modern sideboard with feet, defined by clean lines, balanced proportions, and a deliberately understated aesthetic. Designed to integrate seamlessly into contemporary interiors, it enhances modern living room furniture settings with a refined, architectural presence that prioritizes both functionality and visual lightness.

The linear silhouette is emphasized by a push-pull opening system that eliminates visible handles, reinforcing the sideboard's minimalist and elegant character. Slim is thoughtfully organized with drawers and glass shelves, offering practical storage while maintaining a sense of transparency and order.

Versatile and discreet, Slim adapts effortlessly to different layouts and styles, from modern contemporary living room furniture to more refined luxury living room furniture compositions. Its sober design, combined with precise detailing and high-quality finishes, makes it an ideal choice for those seeking high end living room furniture with timeless appeal and functional clarity. Made in Italy.

Finishes & Materials

Structure: CARB-02 certified wood particle board panels. Interior in Textured finish.

Top: Wood or Stoneware.

Fronts: Wood with Matt/Glossy Lacquered, Up Surfaces, Wood or Textured finishes.

Internal Shelves: Glass.

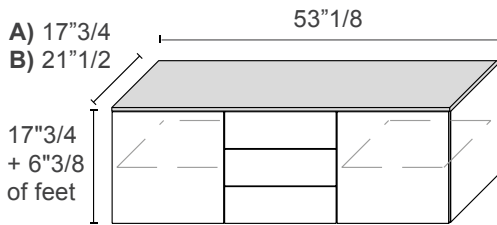
Feet: Metal or Matt Lacquered finishes.

Please note: In the wood finish, the grain direction of the drawer fronts is perpendicular to the grain direction of the door fronts.

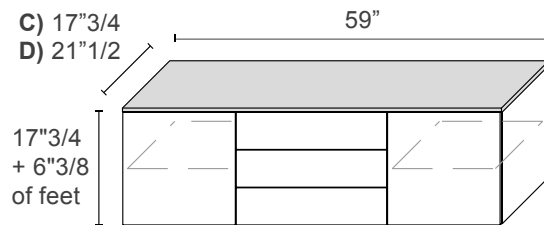
Slim

Dimensions

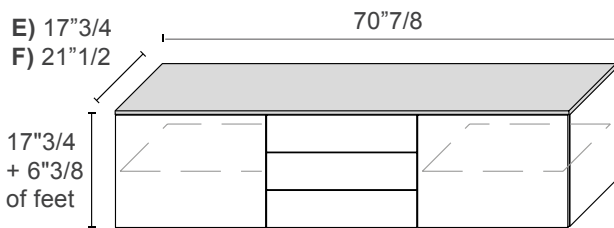
- A) 53"1/8W x 17"3/4D x 24"1/8H - Cod. SLS1462
- B) 53"1/8W x 21"1/2D x 24"1/8H - Cod. SLS1562
- C) 59"W x 17"3/4D x 24"1/8H - Cod. SLS1472
- D) 59"W x 21"1/2D x 24"1/8H - Cod. SLS1572
- E) 70"7/8W x 17"3/4D x 24"1/8H - Cod. SLS1482
- F) 70"7/8W x 21"1/2D x 24"1/8H - Cod. SLS1582
- G) 53"1/8W x 17"3/4D x 30"H - Cod. SLS1463
- H) 53"1/8W x 21"1/2D x 30"H - Cod. SLS1563
- I) 59"W x 17"3/4D x 30"H - Cod. SLS1473
- J) 59"W x 21"1/2D x 30"H - Cod. SLS1573
- K) 70"7/8W x 17"3/4D x 30"H - Cod. SLS1483
- L) 70"7/8W x 21"1/2D x 30"H - Cod. SLS1583



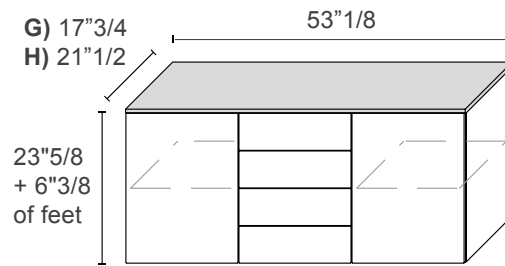
2 doors & 3 drawers + 5 feet



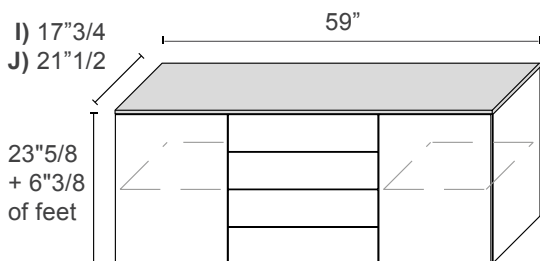
2 doors & 3 drawers + 5 feet



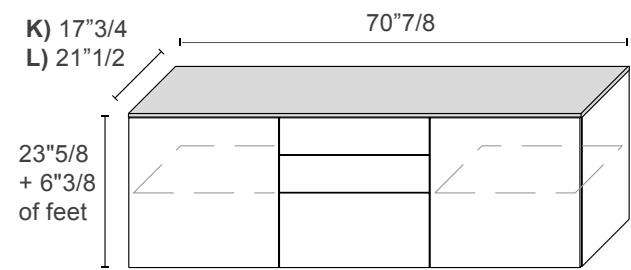
2 doors & 3 drawers + 6 feet



2 doors & 4 drawers + 5 feet



2 doors & 4 drawers + 5 feet



2 doors, 1 deep drawer & 2 drawers + 6 feet