

ISCN 01

Design: Danilo Fedeli



Description

The ISCN 01 round freestanding sink by Norah Design is a definitive statement of avant-garde luxury, beautifully captured in this amber-toned Norahcrystal edition. Designed as a sculptural totem for the modern wellness space, its cylindrical form transitions from a soft, frosted base to a high-clarity polished rim, showcasing the material's extraordinary relationship with light and transparency.

Finishes & Materials

Structure: Crystal.

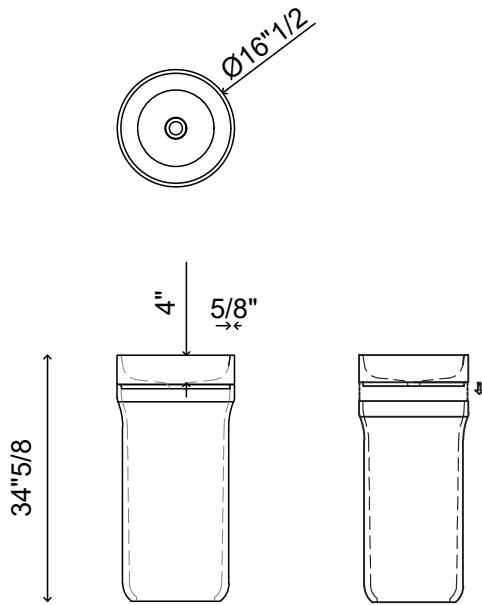
Cover drain: Acrylic.

Fittings: Stainless steel.

ISCN01

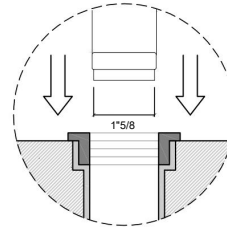
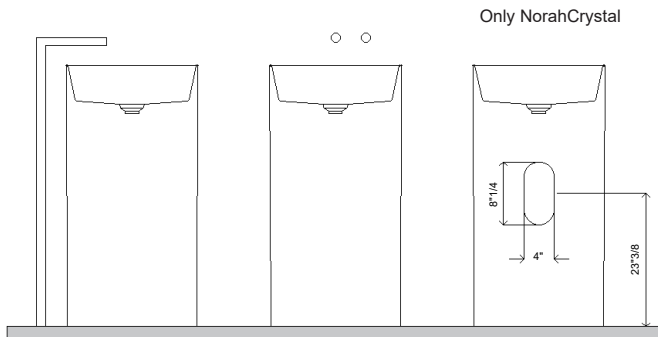
Dimensions

Ø16"1/2 x 34"5/8H



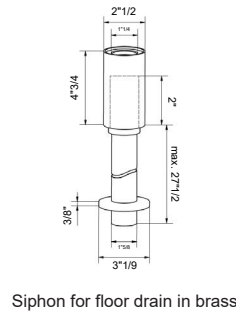
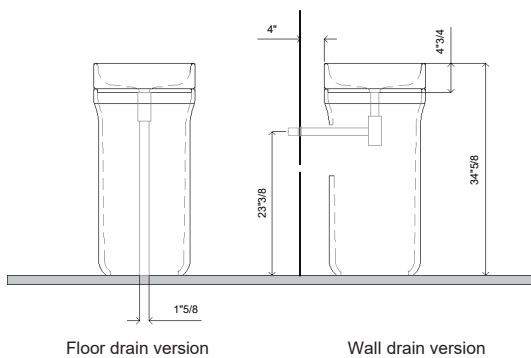
ISCN 01

CONFIGURATION

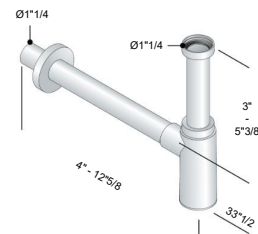


Prepare the floor drain for a 1"5/8 (40mm) tube

Product in NORAHCRYSTAL
siphon in brass 1"5/8 (40mm) drain tube (floor version) / 1"1/4 (33mm) (Wall drain)

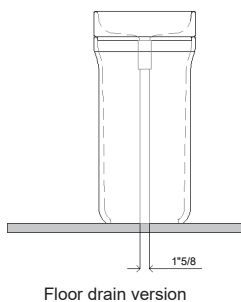


Siphon for floor drain in brass

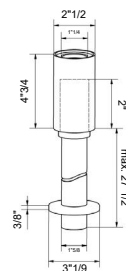


Siphon for wall drain in brass

Product in NORAHMARBLES
Siphon in brass 1"5/8 (40mm) drain tube (floor version)

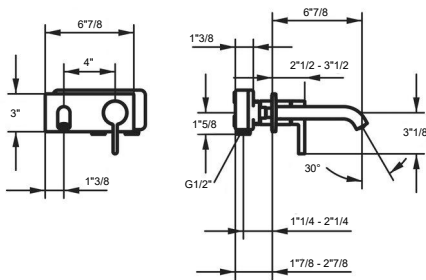
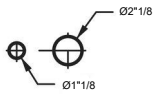


Wall drain version not available



Siphon for floor drain in brass

ISCN 01



- * Trim kit Lever mixer
- * EcoProtect - water-saving device
- * Fixed spout
- Neoperf® Caché® CS, Coin Slot
- * OptimalSpace - ample space for washing or working
- * KWC cartridge M 35 H

- with ceramic discs
- flow rate and temperature continuously variable
- * To be ordered separately:
- Unit for concealed installation 1/2" 39.001.401.931
- * To be ordered separately (optional or if necessary):
- Extension set 20 mm Z.536.333

Technical Data

Flow rate	5 l/min (3 bar)
Spout	fixed
Diameter	173 x 74
Handling	front lever
Color code	chrome
Installation_type	Wall mounted
Faucet_typ	Lever mixer
G_Acoustic group	I
Concealed_unit	Trim kit
Projection_A	A 225
Energy Label	A
material	Brass