

Da45

Design: R&D Dallagnese



Description

The DA45 sideboard embodies refined simplicity through its essential lines, balanced proportions, and understated elegance. Its sober yet sophisticated silhouette is designed to complement modern interiors, making it a perfect addition to any living room furniture sets arrangement. The absence of visible handles enhances its clean, uninterrupted profile, while the sloping cut offers a natural and comfortable grip, preserving both practicality and aesthetic harmony.

A striking contrast between the doors and the luminous textured stoneware insert gives this piece remarkable depth and visual character. This elegant interplay of materials transforms the sideboard from a functional storage unit into a true statement of designer furniture, bringing a sense of premium craftsmanship and timeless luxury to contemporary spaces. The stoneware detail, in particular, adds richness and distinction, elevating the entire composition with subtle sophistication.

Designed for those who value both beauty and functionality, the DA45 sideboard adapts effortlessly to minimalist settings as well as more eclectic interiors. Its strong aesthetic identity and versatile presence make it an ideal element within a curated luxury furniture collection, enhancing both residential living spaces and refined family room furniture environments with modern Italian elegance. Made in Italy.

Finishes & Materials

Structure: CARB-02 certified wood particle board panels. Interior in Textured finish with shelves.

Top & Fronts Detail: Stoneware.

Fronts: Wood with Up Surfaces, Matt or Glossy Lacquered finishes.

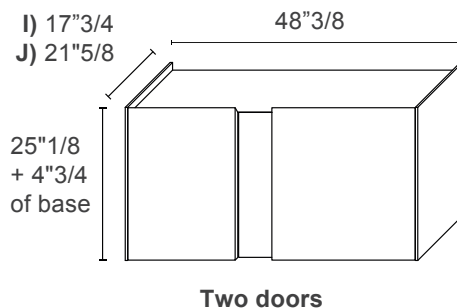
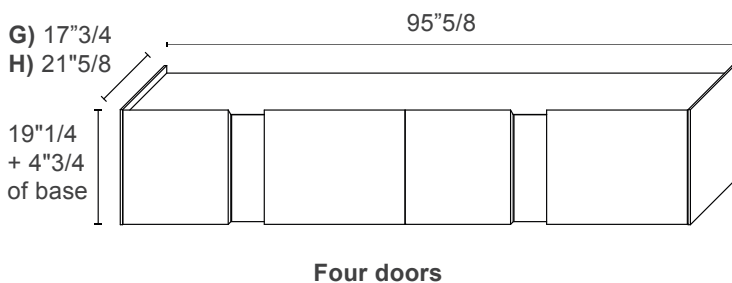
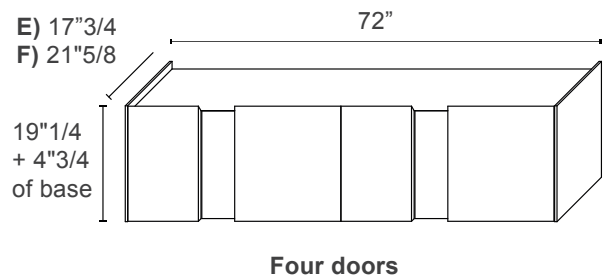
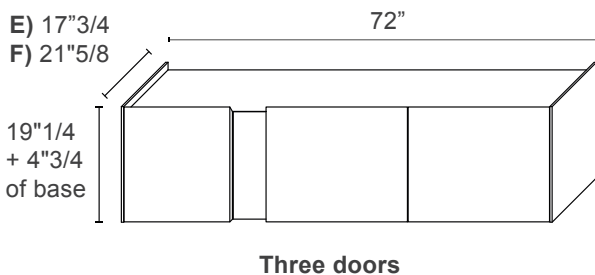
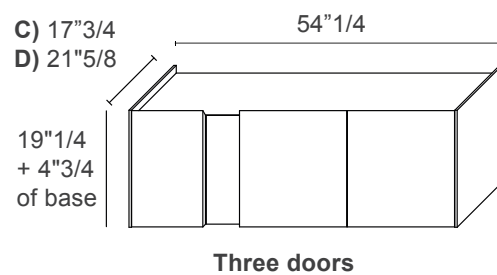
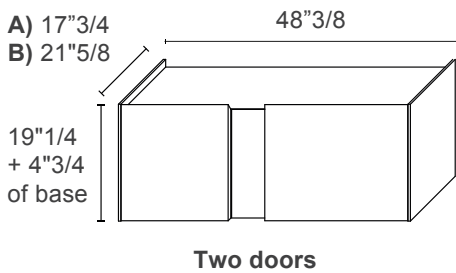
Lama Base: Metal or Matt Lacquered finishes.

Da45

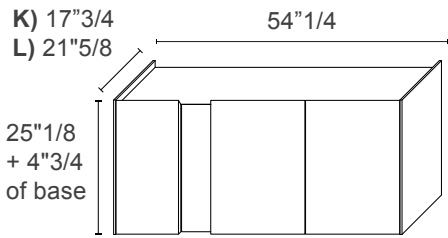
Dimensions

- A) 48"3/8W x 17"3/4D x 24"H - Cod. DAS0452
- B) 48"3/8W x 21"5/8D x 24"H - Cod. DAS0552
- C) 54"1/4W x 17"3/4D x 24"H - Cod. DAS0462
- D) 54"1/4W x 21"5/8D x 24"H - Cod. DAS0562
- E) 72"W x 17"3/4D x 24"H - Cod. DAS0482 / DAS2482
- F) 72"W x 21"5/8D x 24"H - Cod. DAS0582 / DAS2582
- G) 95"5/8W x 17"3/4D x 24"H - Cod. DAS2492
- H) 95"5/8W x 21"5/8D x 24"H - Cod. DAS2592

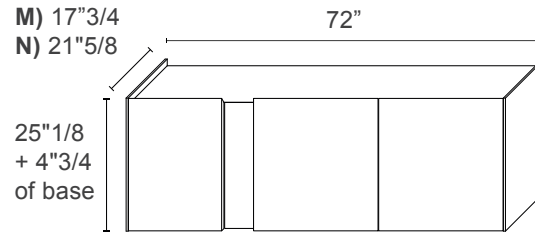
- I) 48"3/8W x 17"3/4D x 29"7/8H - Cod. DAS0453
- J) 48"3/8W x 21"5/8D x 29"7/8H - Cod. DAS0553
- K) 54"1/4W x 17"3/4D x 29"7/8H - Cod. DAS0463
- L) 54"1/4W x 21"5/8D x 29"7/8H - Cod. DAS0563
- M) 72"W x 17"3/4D x 29"7/8H - Cod. DAS0483 / DAS2483
- N) 72"W x 21"5/8D x 29"7/8H - Cod. DAS0583 / DAS2583
- O) 95"5/8W x 17"3/4D x 29"7/8H - Cod. DAS2493
- P) 95"5/8W x 21"5/8D x 29"7/8H - Cod. DAS2593



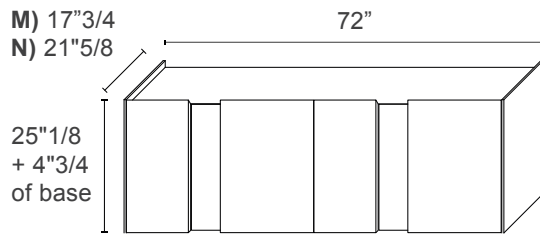
Da45



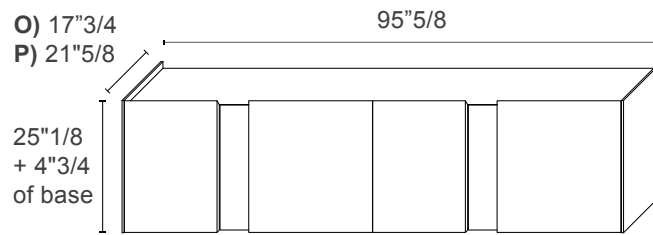
Three doors



Three doors



Four doors



Four doors