

Loft

Design: Ernesto Barbieri & Massimo Mottin



Description

Loft bookcase by M. Mottin and Ernesto Barbieri, 2026. Entirely crafted from metal, Loft is a modular bookcase distinguished by its generous storage capacity and striking geometric composition inspired by the iconic works of Mondrian. Its clean lines and architectural structure create a bold visual rhythm, while the customizable pattern in any RAL color allows for endless design possibilities, adapting seamlessly to contemporary residential or contract interiors. Made in Italy.

Wall-mounting is recommended using the provided hardware, which is depth-adjustable to accommodate the skirting board.

Loft

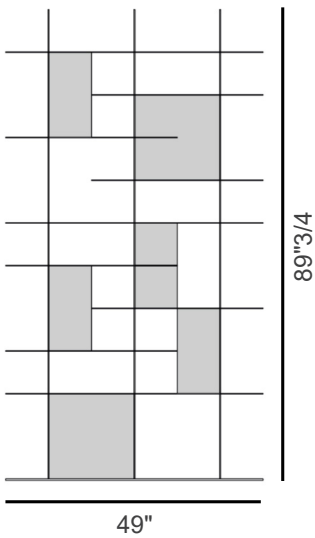
Dimensions

Loft A & Loft B: 49"W x 11"7/8D x 89"3/4H

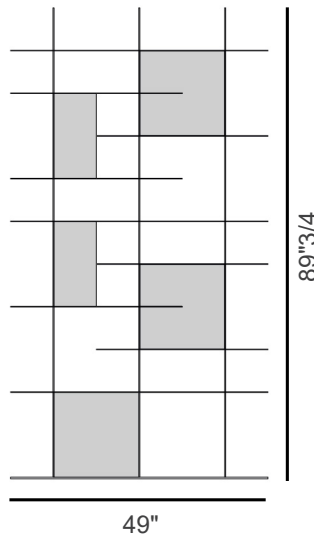
Loft A+A, B+B, A+B & B+A: 98"W x 11"7/8D x 89"3/4H

Loft A+B+A & B+A+B: 147"W x 11"7/8D x 89"3/4H

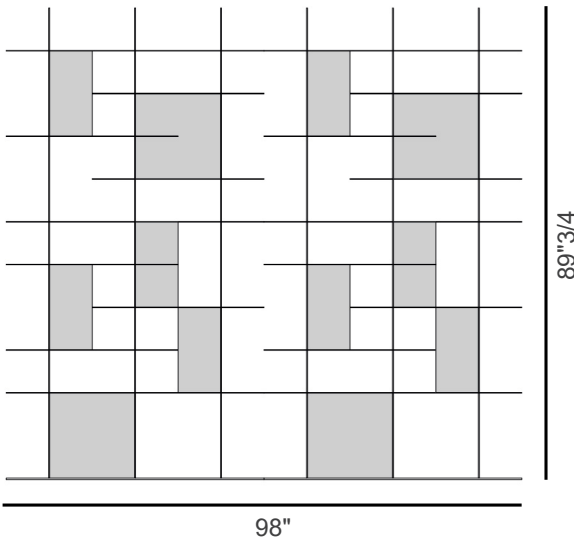
Loft A



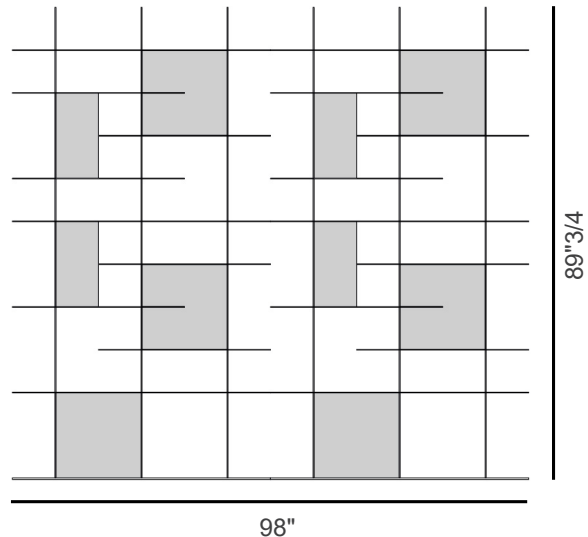
Loft B



Loft A+A

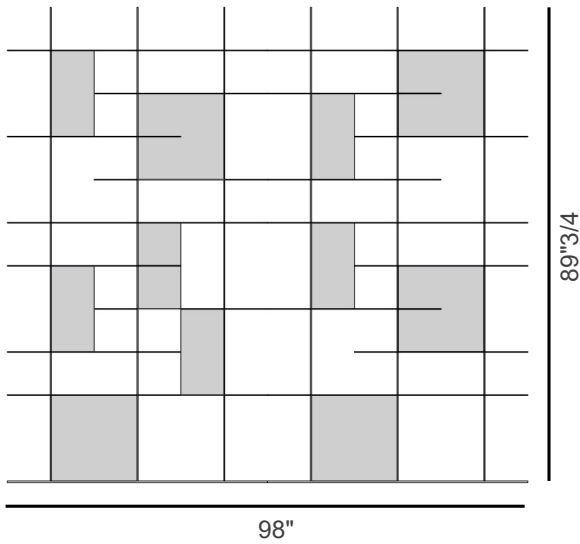


Loft B+B

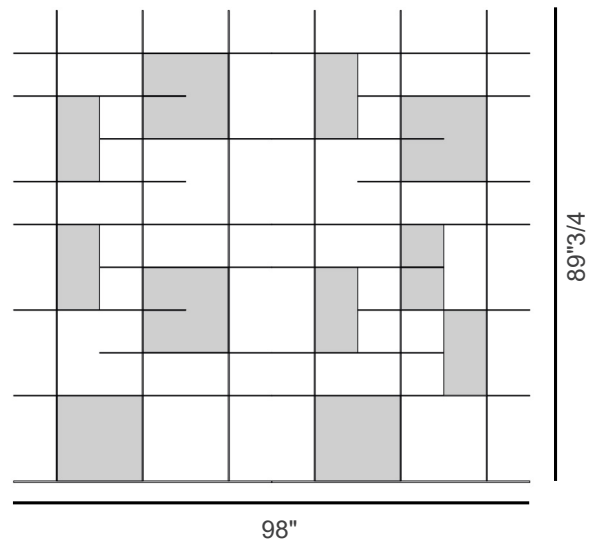


Loft

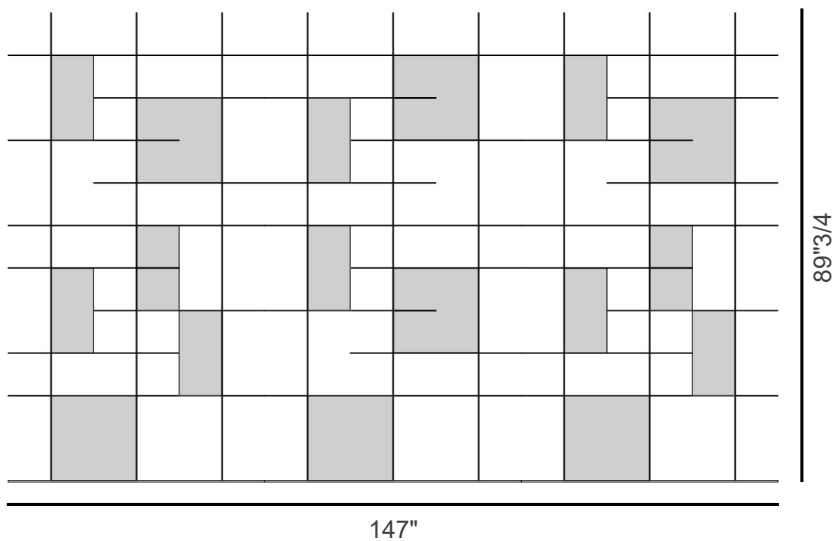
Loft A+B



Loft B+A

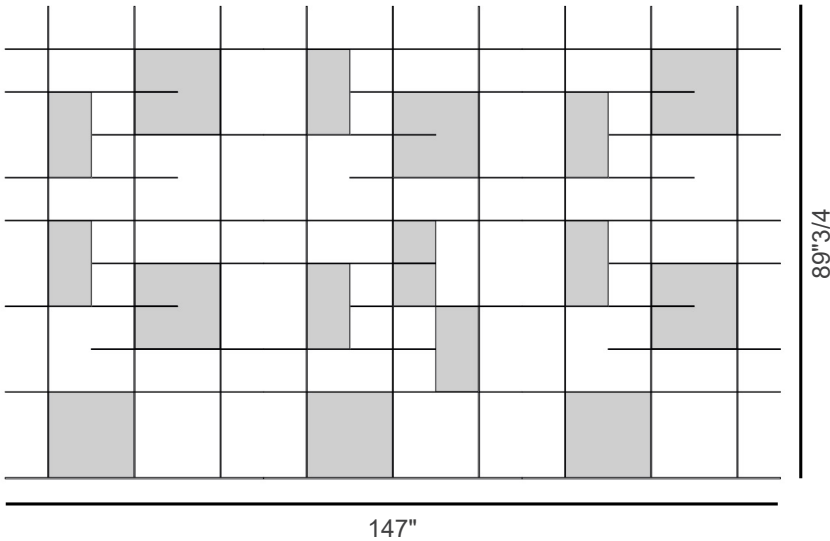


Loft A+B+A



Loft

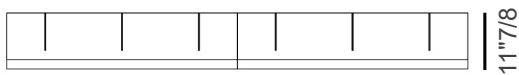
Loft B+A+B



Loft A&B depth



Loft A+A, B+B, A+B, B+A depth



Loft A+B+A, B+A+B depth

