

George

Design: Ludovica + Roberto Palomba



Description

Weather resistant dining table with rectangular top and stainless steel base. The 1/2" thick top is available in accoya wood or lava stone. Seats up to ten people. Made in Italy.

Finishes & Materials

Base: Stainless steel (I1).

Top: Accoya wood, natural teak stained (L2) or lava stone in beige (S27), dark green (S28) or dark grey (S29) color.



* For more specifications, please refer to the "Finishes & Materials" PDF

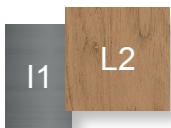
George

Dimensions

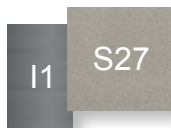
98"3/8W x 39"3/8D x 29"1/8H



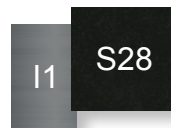
Available combinations:



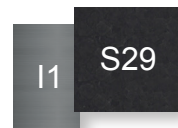
STAINLESS STEEL
BASE + ACCOYA
WOOD TOP



STAINLESS STEEL
BASE + BEIGE LAVA
STONE TOP



STAINLESS STEEL
BASE + DARK GREEN
LAVA STONE TOP



STAINLESS STEEL
BASE + DARK GREY
LAVA STONE TOP

* For more specifications, please refer to the "Finishes & Materials" PDF