

In&out

Design: Ernesto Lechter



Description

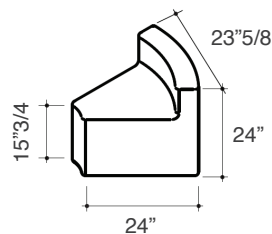
Chair with frame in solid okumé wood and Dryfeel foam. Also available in the bi-fabric version in a choice of colors.
Made in Italy.

Dimensions

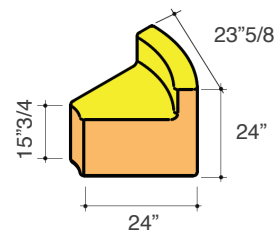
23"5/8W x 24"D x 24"H

Seat height: 15"3/4

Single fabric



Fabric combination (bi-fabric)



● Fabric 1 ● Fabric 2

Finishes and materials

Legs: White, Silk Grey, Grey, Dark Brown or Black aluminum or Iroko wood.

Seat and back cover: C.O.M. Fabric, Fabric Cat. B/C/D/E or Perla or Grey Brown Texture.

(For more specifications, please refer to "Finishes & Materials")